

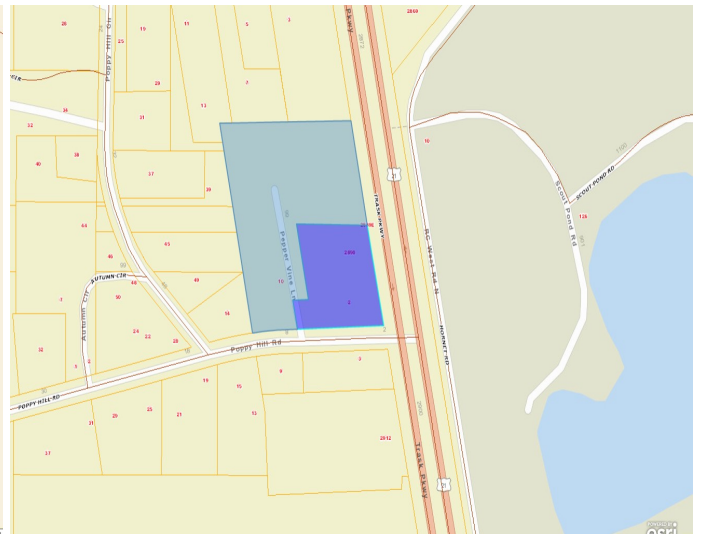
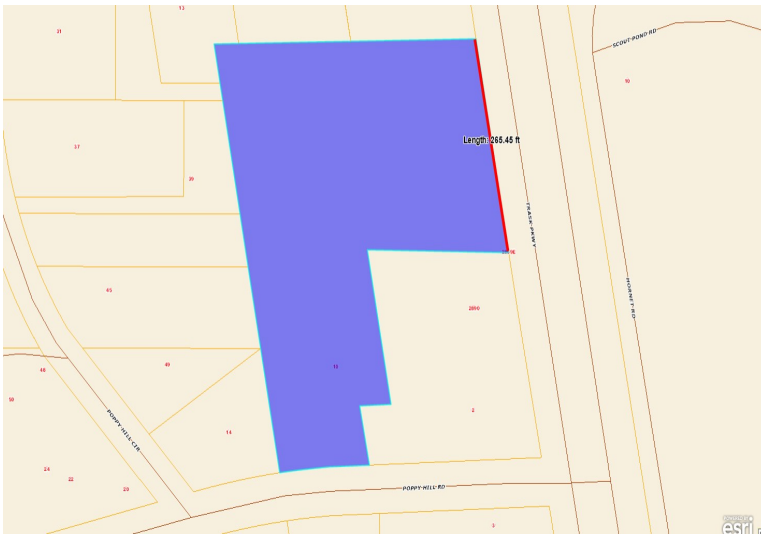


Very visible parcel with frontage on Highway 21 entering Beaufort SC. The property is zoned for industrial uses such as manufacturing, storage and transportation. Survey and wetlands delineation in hand. Property is all flood zone C and in the Federally designated Opportunity Zone. Traffic count in excess of 21,000 VPD. This can be purchased with 2890 Trask Pkwy, for a total of 5.2 acres.

MICHAEL MARK, CCIM
MMARK@CCIM.NET | 843.812.6023
WWW.CHARTERONEREALTYCOMMERCIAL.COM

10 Poppy Hill Rd

Both Available Parcels



Beaufort County Zoning - Industrial



SCDOT Traffic Counts 2009-2018

A product of SCDOT GIS/Mapping    

- 2018 Traffic Counts
- 2017 Traffic Counts
- 2016 Traffic Counts
- 2015 Traffic Counts
- 2014 Traffic Counts
- 2013 Traffic Counts
- 2012 Traffic Counts
- 2011 Traffic Counts
- 2010 Traffic Counts

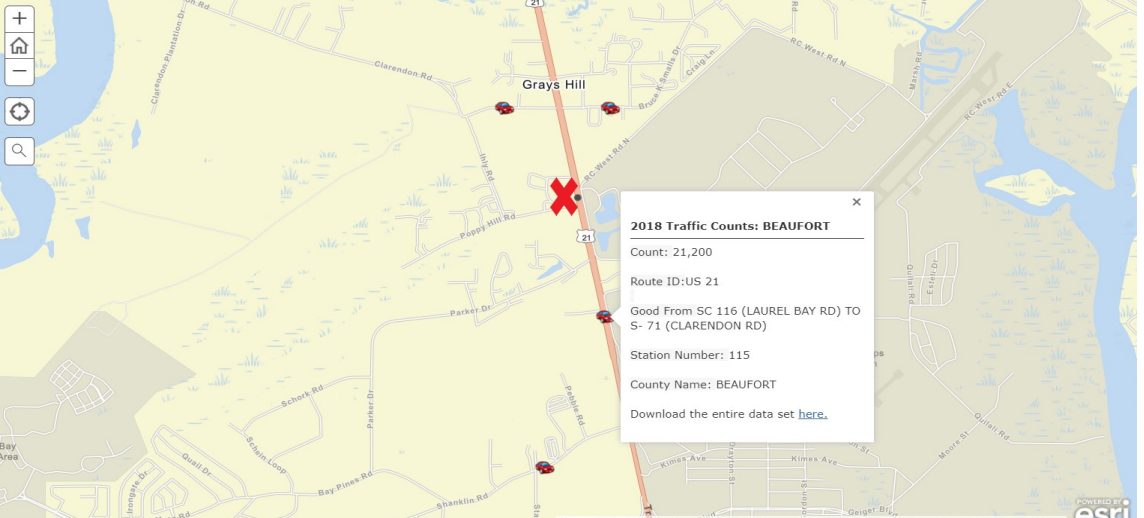
Welcome to SCDOT's Traffic Count Comparison application. This application will allow you to view traffic count data from the period of 2009-2016.

To view this data in tabular form, click [here](#).

To view pdf maps of the station locations by county or metro area, click [here](#).

To search for a specific location, click the magnifying glass to the right and type in the [full address including city and state](#).

If you are using a GPS enabled device, click on the locate me button. The locate me button is directly above the magnifying glass.



2018 Traffic Counts: BEAUFORT

Count: 21,200

Route ID: US 21

Good From SC 116 (LAUREL BAY RD) TO S- 71 (CLARENDON RD)

Station Number: 115

County Name: BEAUFORT

[Download the entire data set here.](#)