



CHARTERONE COMMERCIAL
REALTY

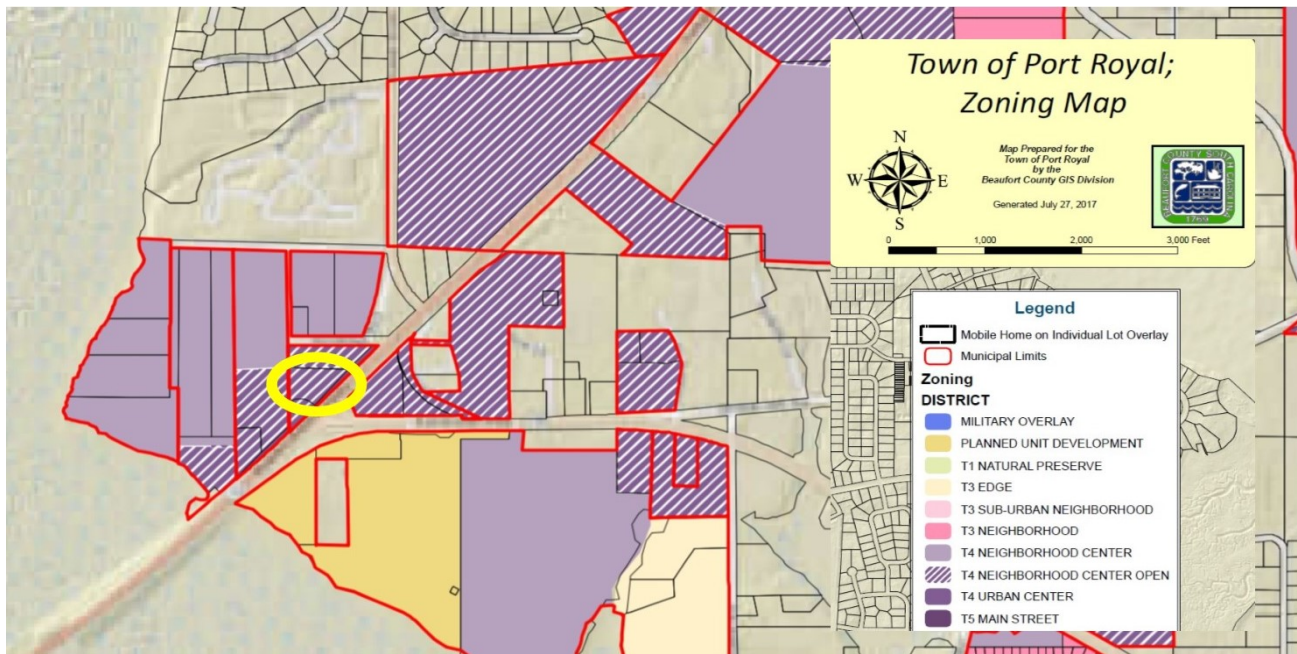
**848 Robert Smalls Pkwy
Beaufort, SC 29906**

1.23 Acres | \$465,000



Very high visibility corner with 320 feet of frontage at the signalized intersection of Highway 170 and Savannah Hwy. This property was annexed into the town of Port Royal with T4 Neighborhood Center Open zoning. Property is all flood Zone C with good elevation.

MICHAEL MARK, CCIM
MMARK@CCIM.NET | 843.812.6023
WWW.CHARTERONEREALTYCOMMERCIAL.COM



SCDOT Traffic Counts 2009-2018

A product of SCDOT GIS/Mapping

2018 Traffic Counts 2017 Traffic Counts 2016 Traffic Counts 2015 Traffic Counts 2014 Traffic Counts 2013 Traffic Counts 2012 Traffic Counts 2011 Traffic Counts 2010 Traffic Counts

Welcome to SCDOT's Traffic Count Comparison application. This application will allow you to view traffic count data from the period of 2009-2016.

To view this data in tabular form; click [here](#)

To view pdf maps of the station locations by county or metro area; click [here](#).

To search for a specific location, click the magnifying glass to the right and type in the [full address including city and state](#).

If you are using a GPS enabled device, click on the locate me button. The locate me button is directly above the magnifying glass.



2018 Traffic Counts: BEAUFORT

Count: 26,900

Route ID: SC 170

Good From County Line - JASPER TO S-20 (BROAD RIVER BLVD)

Station Number: 173

County Name: BEAUFORT

[Download the entire data set here.](#)