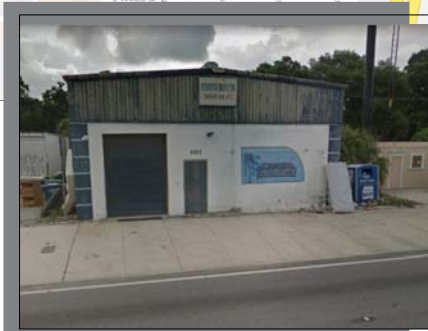
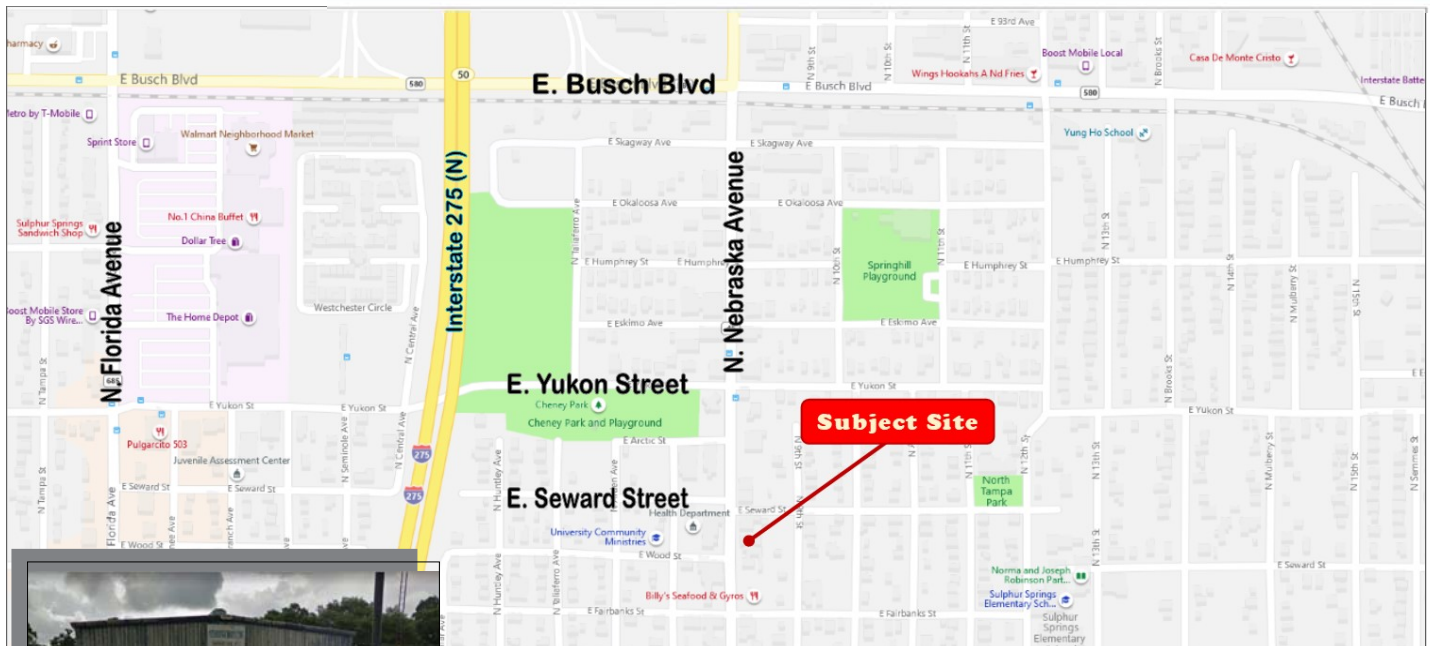


FOR SALE: 3,696 SF COMMERCIAL BUILDING



8523 N. Nebraska Avenue Tampa, FL 33604

PROPERTY HIGHLIGHTS:

- Folio#: 146242-0000
- Subject Size: 3,696 SF
- Lot Dimensions: 50' x 112'
- Lot Size: 5,600 SF
- Zoned: CI (Commercial Intensive)
- Highest & Best Use: Commercial or Re/New Development
- Current Use: Retail Storefront
- Situated Immediately South of Busch Blvd & Nebraska Avenue

OFFERING PRICE: \$275,000/

LISTING AGENT: Tina Marie Eloian • P: 813-997-4321 • F: 813-930-0946 • E: Tina@FloridaCommercialGroup.com



*Locally Owned,
Globally Recognized*



401 E. Palm Avenue ❖ Tampa, FL 33602 ❖ www.FloridaCommercialGroup.com

Sales • Investments • Leasing • Property Management



Each Office Individually Owned and Operated

This information is from sources deemed to be reliable. We are not responsible for misstatements of facts, errors or omissions, prior sale, change of price and/or terms or withdrawal from the market without notice. Buyer shall verify all information with their own representatives as well as state and local agencies.