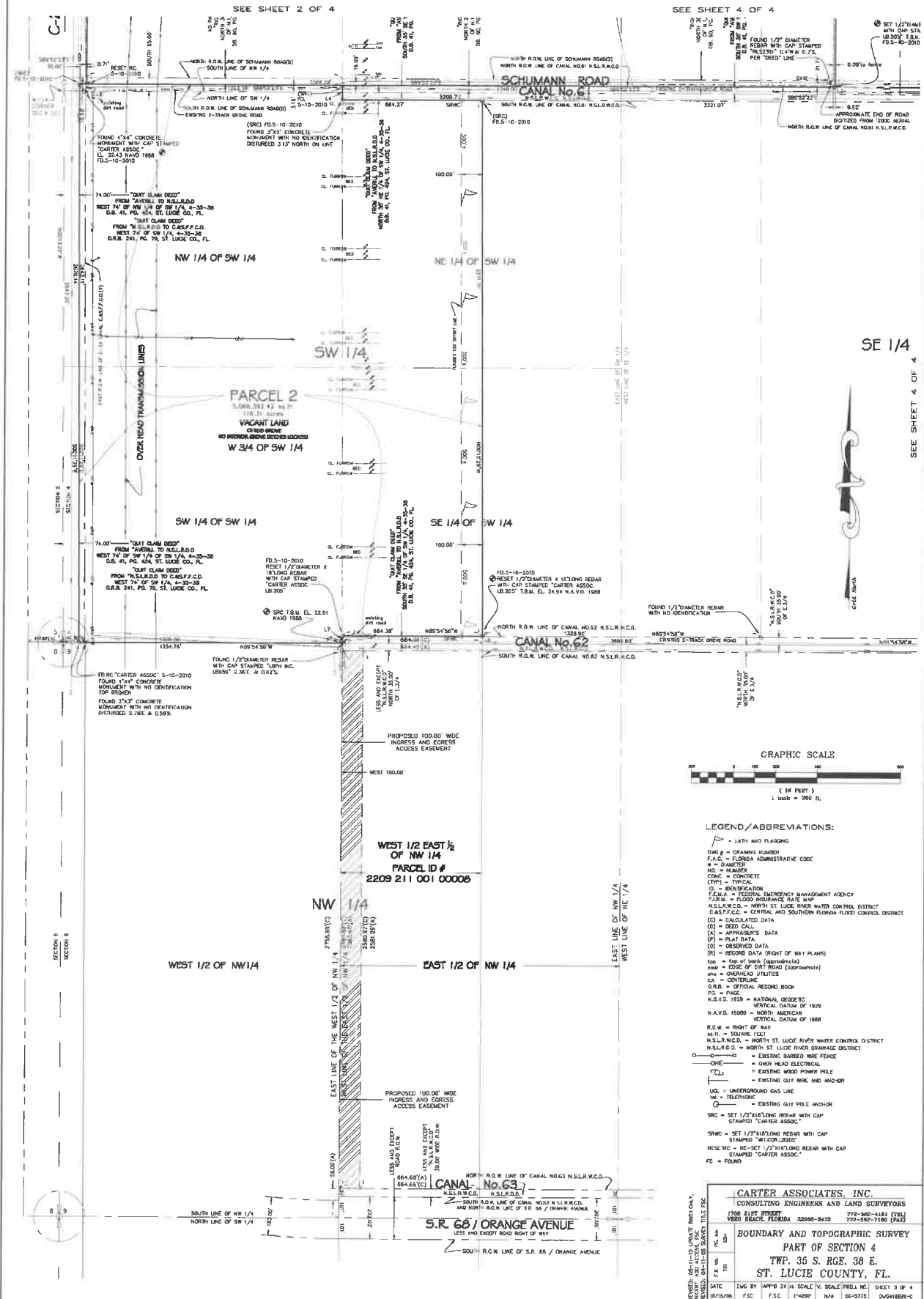


# BOUNDARY AND TOPOGRAPHIC SURVEY

SHOWING  
BOUNDARY AND VERTICAL TRANSECT IN PART OF  
SECTION 4, TOWNSHIP 35 SOUTH, RANGE 38 EAST, ST.  
LUCIE COUNTY, FLORIDA.



- LEGEND / ABBREVIATIONS:**
- LATH AND FLAGGING
  - DWG.# = DRAWING NUMBER
  - F.A.C. = FLORIDA ADMINISTRATIVE CODE
  - Ø = DIAMETER
  - NO. = NUMBER
  - CONC. = CONCRETE
  - (TP) = TYPICAL
  - IDENTIFICATION
  - F.E.M.A. = FEDERAL EMERGENCY MANAGEMENT AGENCY
  - F.E.M.A. FLOOD INSURANCE RATE MAP
  - N.S.L.R.W.C.D. = NORTH ST. LUCIE RIVER WATER CONTROL DISTRICT
  - C.A.S.F.F.C.D. = CENTRAL AND SOUTHERN FLORIDA FLOOD CONTROL DISTRICT
  - (C) = CALCULATED DATA
  - (OD) = ODD CALL
  - (CA) = APPROPRIATE DATA
  - (P) = PLAT DATA
  - (O) = OBSERVED DATA
  - (R) = RECORD DATA (RIGHT OF WAY PLANS)
  - 100 = 100'± BENCH (ELEVATIONS)
  - color = EDGE OF GRT ROAD (COORDINATES)
  - OH = OVERHEAD UTILITIES
  - CA = CENTERLINE
  - O.R.B. = OFFICIAL RECORD BOOK
  - PL = PAGE
  - N.A.V.D. 1929 = NATIONAL GEODETIC VERTICAL DATUM OF 1929
  - N.A.V.D. 1988 = NORTH AMERICAN VERTICAL DATUM OF 1988
  - R.O.W. = RIGHT OF WAY
  - S.F.L. = SQUARE FEET
  - N.S.L.R.W.C.D. = NORTH ST. LUCIE RIVER WATER CONTROL DISTRICT
  - N.S.L.R.W.C.D. = NORTH ST. LUCIE RIVER DRAINAGE DISTRICT
  - — — — — EXISTING BARBED WIRE FENCE
  - — — — — OVER HEAD ELECTRICAL
  - — — — — EXISTING WOOD POWER POLE
  - — — — — EXISTING GUY WIRE AND ANCHOR
  - — — — — UNDERGROUND GAS LINE
  - — — — — TELEPHONE
  - — — — — EXISTING GUY POLE ANCHOR
  - SRC = SET 1/2" X 16" LONG REBAR WITH CAP STAMPED "CARTER ASSOC."
  - SHWC = SET 1/2" X 16" LONG REBAR WITH CAP STAMPED "WACOR 18205"
  - RESHCRC = RE-SET 1/2" X 16" LONG REBAR WITH CAP STAMPED "CARTER ASSOC."
  - FD = FOUND

**CARTER ASSOCIATES, INC.**  
CONSULTING ENGINEERS AND LAND SURVEYORS

1706 21ST STREET      772-345-1181 (TOLL FREE)  
9280 BEACH, FLORIDA 32086-8472      772-342-7190 (FAX)

**BOUNDARY AND TOPOGRAPHIC SURVEY**  
**PART OF SECTION 4**  
**TWP. 35 S. RGE. 38 E.**  
**ST. LUCIE COUNTY, FL.**

DATE: DWG BY: APP'D BY: SCALE: 1" = 200' (PLAT) SHEET 3 OF 4  
REVISED: 05/11/10 UNITS: BARYTONE, F.S.C. 17400P N/A 06-0701 DWG#1828-C



**De George Properties (Rave Groves)  
Ft. Pierce, Fl.  
September 27, 2018**

