

# HOAGLAND INDUSTRIAL LAND

200 S HOAGLAND BOULEVARD

KISSIMMEE, FL 34741



41.43 AC



LAND FOR SALE



CALL FOR OFFERS

## PROPERTY INFORMATION

Sale Price: Call For Offers

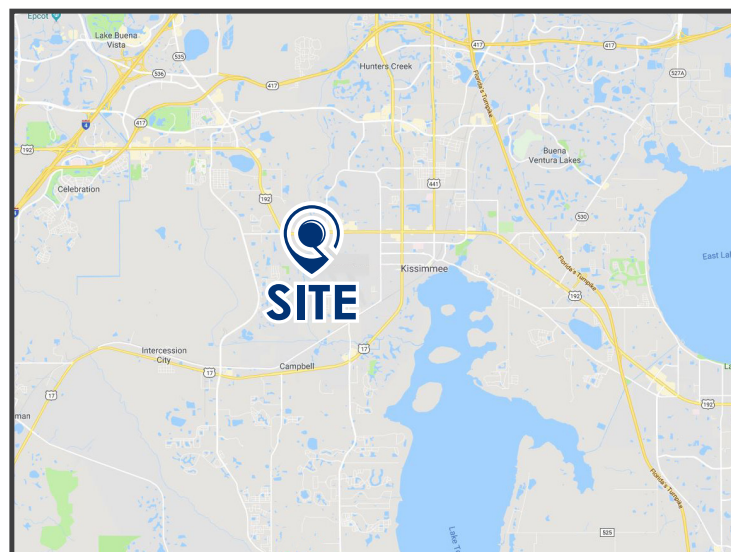
Size: 41.43 AC

Property Zoning: KAI/Airport Industrial

Hoagland Blvd AADT: 11,500 CPD

Clay St AADT: 9,900 CPD

- Undeveloped industrial land with 260' of frontage on South Hoagland Boulevard.
- Possible 17± acres.
- All utilities available.
- Parcel # 30-25-29-00U-0020-000.
- Located in the industrial area of Kissimmee near the Kissimmee Gateway Airport.



## DEMOGRAPHICS

	1-MILE	3-MILES	5-MILES
Total Population	3,461	56,539	124,164
Five-Year Increase	2.0%	2.3%	2.3%
Avg Household Income	\$51,396	\$48,310	\$52,309
Total Households	1,092	20,440	44,190
Daytime Employees	1,179	24,712	49,125

(Applied Geographic Solutions 2019)

[LQWEST.COM/HOAGLAND-INDUSTRIAL-LAND](http://LQWEST.COM/HOAGLAND-INDUSTRIAL-LAND)

TAI LEE, ASSOCIATE

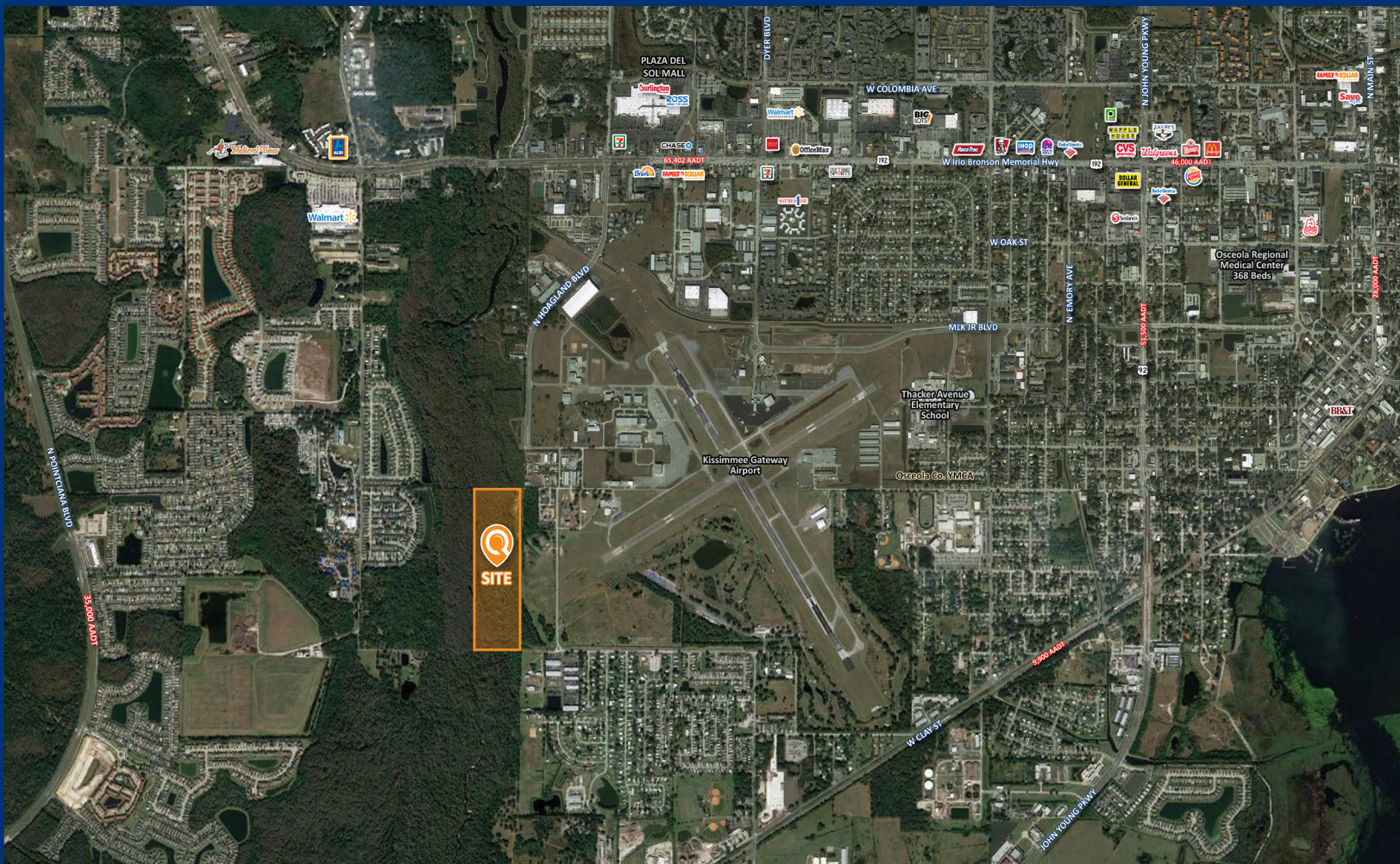
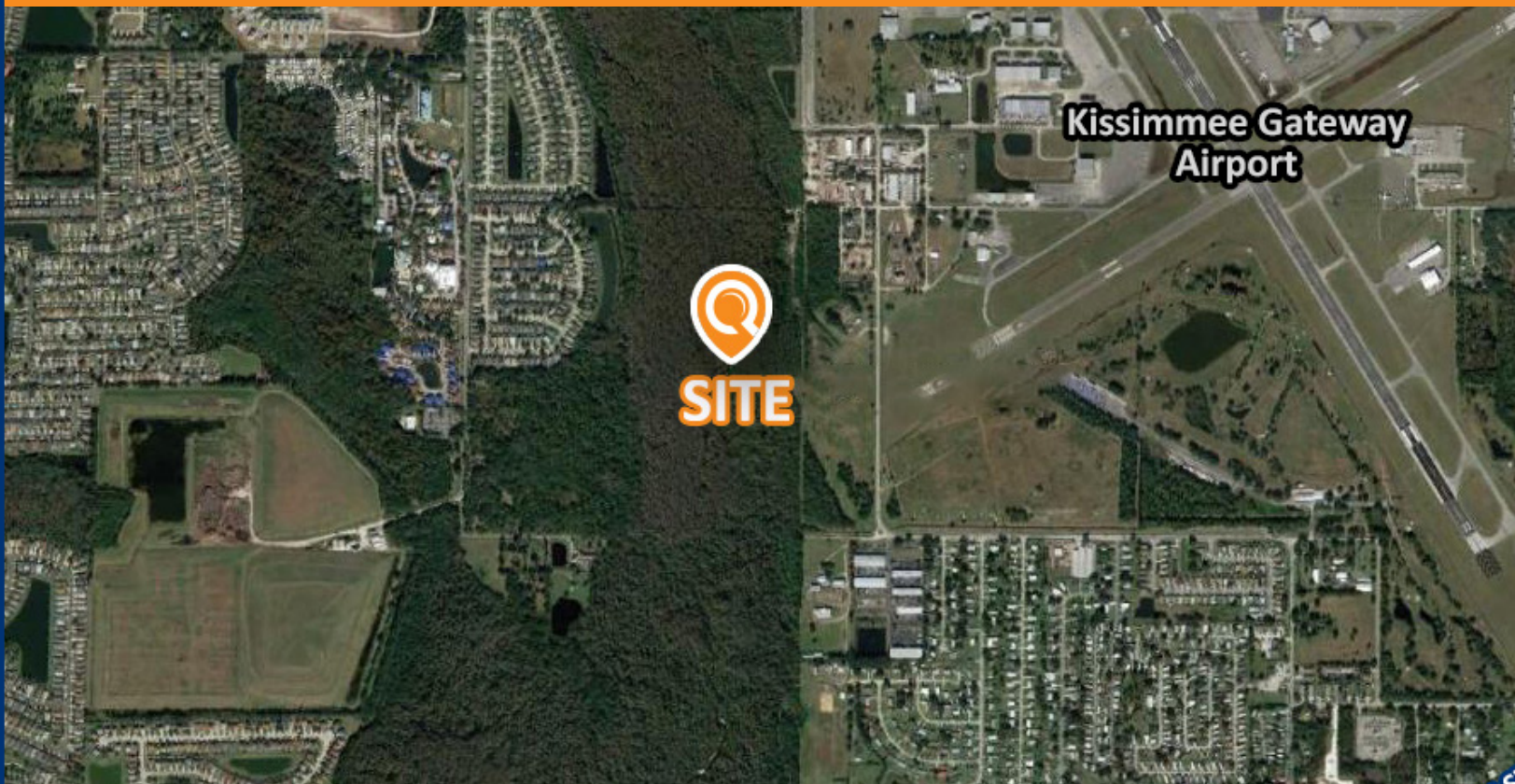
D: 407.749.1361 © M: 407.687.9798

[tlee@lqwest.com](mailto:tlee@lqwest.com) © My Listings

LANDQWEST COMMERCIAL REAL ESTATE SERVICES © 423 S KELLER ROAD #400, ORLANDO, FL 32810







423 S Keller Road, Suite 400, Orlando, FL 32810

MAIN: 407.660.7500 © FAX: 407.660.7600 © [LQWEST.COM](http://LQWEST.COM)

Information obtained from owner(s) or other sources deemed reliable. We have no reason to doubt its accuracy, but cannot guarantee it. All properties subject to change or withdrawal without notice.