

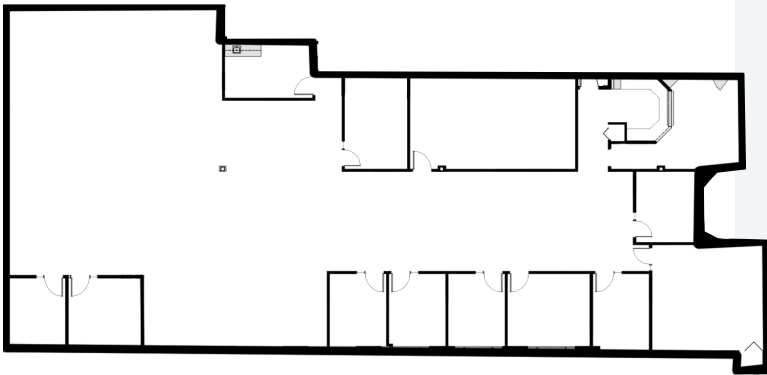
Bayside Concourse

15500 Lightwave Dr. | Clearwater FL 33760



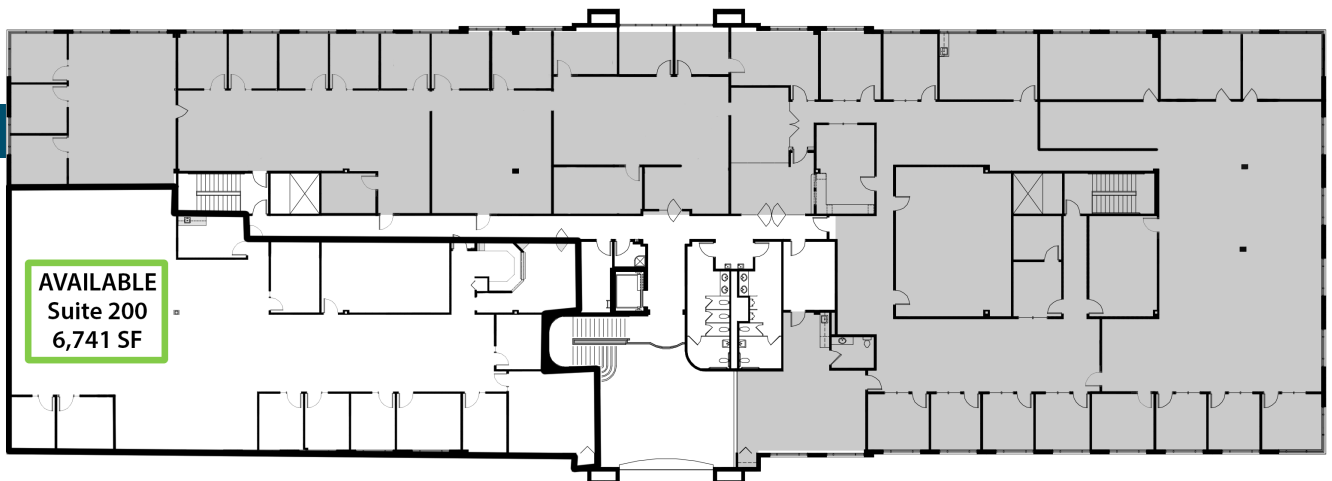
**HOLD
THYSSEN**
REAL ESTATE SERVICES

Suite 200 | 6,741 SF



- Class "A" Office Space
- Flexible Floorplan
- Can Be Subdivided
- Parking Ratio: 4.55 / 1,000 SF

2nd Floor



RICHARD FISHER

rfisher@holdthyssen.com

M: 727-417-7931