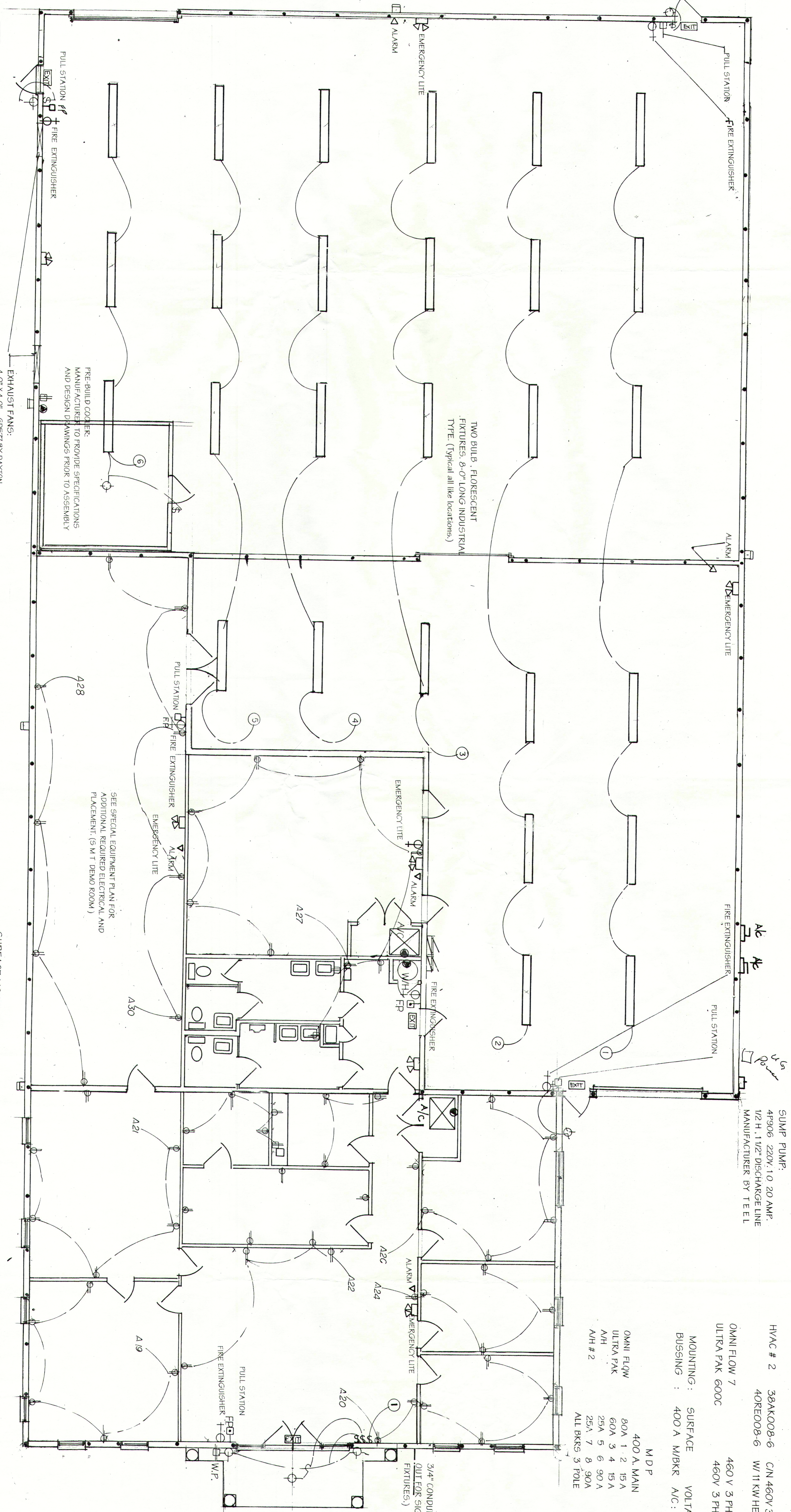


# ELECTRICAL RISER



EXHAUST FANS:  
 4-0" X 4-0" 60577 BY DAVTON  
 15V / 230 1 φ HL  
 OR EQUAL, LOCATED @ 10'-0"  
 A.F.F. (2 Like locations shown)

SURFACE MOUNT LIGHT:  
 LUMARK 250 W - METAL HULIDE  
 100W - 250 MT (0φ equal)  
 (3 Required)

**PANEL A:**  
 MOUNTING : SURFACE VOLTAGE 120/208V 3 PH 4W  
 BUSING 225A M/BKR A/C : 22,000A

DESCRIPTION	BKR	BKR	DESCRIPTION	BKR
OMNI FLOW	20A	1-2	EDGE BELT CONNECTOR #1	20A
OMNI FLOW	20A	3-4	EDGE BELT CONNECTOR #1	20A
OMNI FLOW	20A	5-6	EDGE BELT CONNECTOR #1	20A
OMNI FLOW	20A	7-8	EDGE BELT CONNECTOR #1	20A
BAKE BOARD	20A	9-10	EDGE BELT CONNECTOR #2	20A
BAKE BOARD	20A	11-12	EDGE BELT CONNECTOR #2	20A
WIDE BHT FAN	20A	13-14	EDGE BELT CONNECTOR #2	20A
WIDE BHT FAN	20A	15-16	EDGE BELT CONNECTOR #2	20A
5HP TOLFP AK	20A	17-18	ULTRA PRINTER 3-PHASE	20A
250V WALL PAK	20A	19-20	ULTRA PRINTER	20A
5HP TOLFP AK	20A	21-22	ULTRA PRINTER	20A
250V WALL PAK	20A	23-24	ULTRA PRINTER	20A
SIPRACE 80 PH	20A	25-26	ULTRA PRINTER	20A
	20A	27-28		
	20A	29-30		

**PANEL B:**  
 MOUNTING : SURFACE VOLTAGE 120/208V 3PH 4W  
 BUSING 225A M/BKR A/C : 22,000 A

DESCRIPTION	BKR	BKR	DESCRIPTION	BKR
OFFICE RECER.	20A	1-2	OFFICE LIGHTING	20A
OFFICE RECER.	20A	3-4	OFFICE LIGHTING	20A
OFFICE RECER.	20A	5-6	OFFICE LIGHTING	20A
OFFICE RECER.	20A	7-8	OFFICE LIGHTING	20A
OFFICE RECER.	20A	9-10	OFFICE LIGHTING	20A
OFFICE RECER.	20A	11-12	OFFICE LIGHTING	20A
WHSE RECER.	20A	13-14	WHSE LIGHTING	20A
WHSE RECER.	20A	15-16	WHSE LIGHTING	20A
WHSE RECER.	20A	17-18	WHSE LIGHTING	20A
WHSE RECER.	20A	19-20	WHSE LIGHTING	20A
WHSE RECER.	20A	21-22	WHSE LIGHTING	20A
WHSE RECER.	20A	23-24	WHSE LIGHTING	20A
FAP RECER.	20A	25-26		
	20A	27-28		
	20A	29-30		

**LIGHTING LOAD:**  
 OFFICE (4,811 SQ. FT. X 1.25) 21,048 VA  
 WAREHOUSE (7,673 SQ. FT. X 2) 15,346 VA  
 60 DUPLEX RECEPTACLES X 180 VA 10,800 VA  
 Pylon SIGN 1,200 VA  
 52,230 / (208 X 1,732) 145 AMP

HVAC # 1 36CKD60-60 CN 480V 3 PH. 11 AMP  
 FB4COTD-6 W/9 KW HEATER 16 AMP

HVAC # 2 36AKD08-6 CN 480V 3 PH. 14 AMP  
 40RE008-6 W/11 KW HEATER 19 AMP

OMNI FLOW 7 480V 3 PH. 80 AMP  
 ULTRA PAK 600C 480V 3 PH. 60 AMP

MOUNTING : SURFACE VOLTAGE: 480V 3 PH.  
 BUSING : 400 A M/BKR A/C : 22,000 A

MDP  
 400 A MAIN  
 80A 1 2 15A CN #1  
 ULTRA PAK 60A 3 4 15A CN #2  
 AH #1 25A 5 6 90A TRANSF #1  
 AH #2 25A 7 8 90A TRANSF #2  
 ALL BKRS 3 FOLE

# ELECTRICAL PLAN

PLANNING & DESIGN BY:  
 Benjamin J. Castallo, S.  
 PROFESSIONAL BUILDING DESIGNER  
 (407) 880-1888  
 P.B.D. FL-140  
 P.O. BOX 1014 APOPKA, FL. 32712

DATE: 10-31-97  
 DRAWN BY: CIO-03-97  
 CHECKED BY: CIO-03-97  
 SHEET NO: E2  
 OF SHEETS: 2

REVISIONS	BY