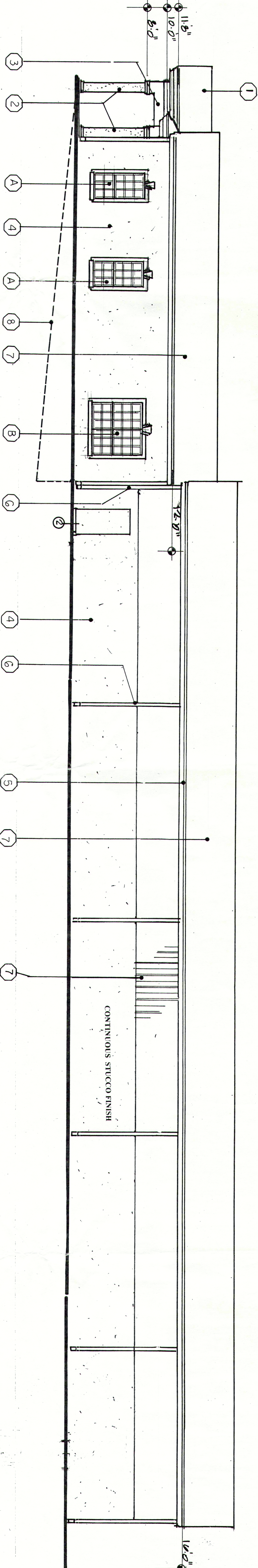
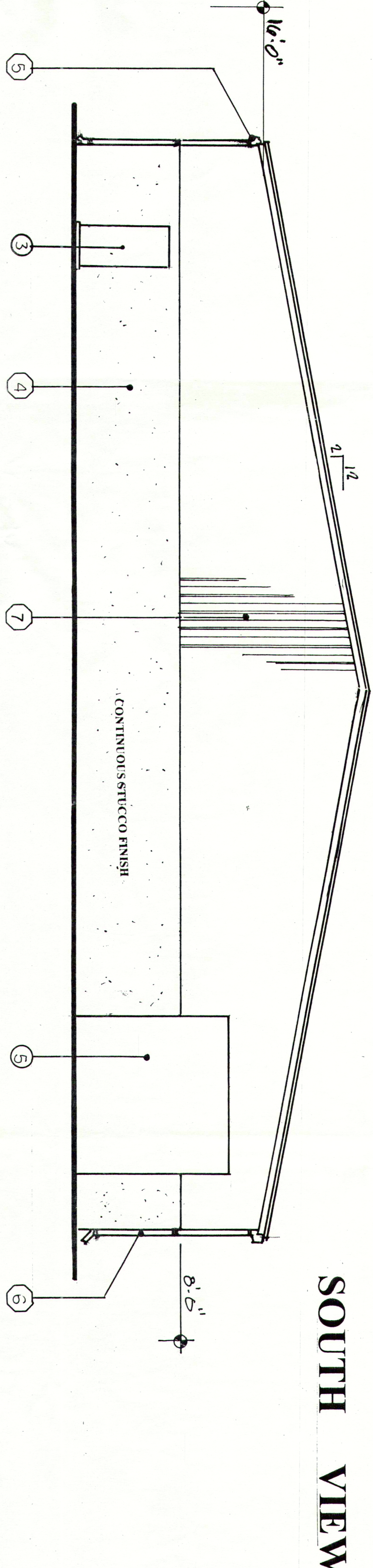


WEST ELEVATION



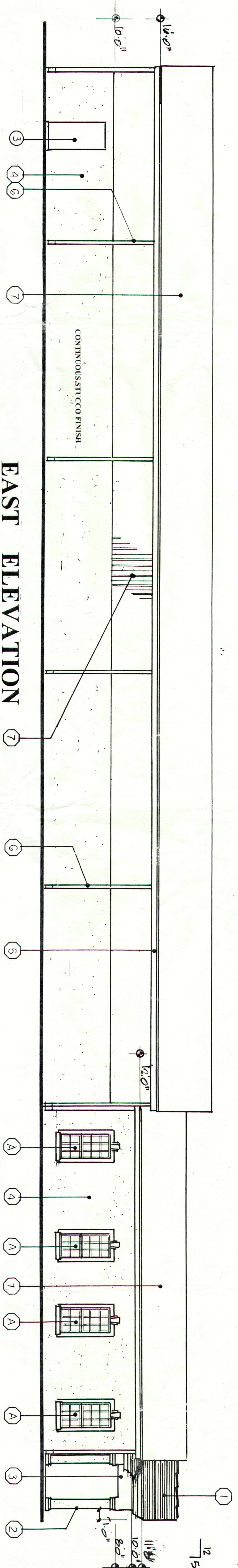
SOUTH VIEW



WINDOW SCHEDULE:
SYMBOL **WIDTH** **HEIGHT** **REMARKS**
 A) 3'-0" 6'-0" 1/2" aluminum (2-6/8) 6'-0"
 B) 2'-3-1/2" 6'-0" 1/2" aluminum (2-2x8) 6'-0"
 milled

DOOR SCHEDULE:
SYMBOL **WIDTH** **HEIGHT** **REMARKS**
 3) 3'-0" 7'-0" metal, s.s.c. raised pan.
 5) 12'-0" 12'-0" roll-up over head garage door, 1.12, ht. rated door assembly

EAST ELEVATION



ELEVATION FINISH SCHEDULE:

- 1) #315 DIMENSIONAL TYPE SHINGLES, ARCHITECT 80 OR GAF TIMBERLINE OR EQUAL.
- 2) 10" ROUND COLUMN WITH 7/8" 2-COAT STUCCO FINISH. (See floor plan for structural requirements.)
- 3) 12X12" CONTINUOUS SOFFIT, 7/16" OSB W/EAIP WITH 7/8" 2-COAT STUCCO FINISH. (See floor plan for structural requirements.)
- 4) 5/8" 2-COAT STUCCO FINISH APPLICATION OVER MASONRY, 7/8" 2-COAT STUCCO OVER AREAS REQUIRING LATH APPLICATIONS.
- 5) CONTINUOUS 6" WIDE GUTTER ALONG EACH PERIMETER BUILDING SIDE.
- 6) DOWNGROUT AT EACH BAY LOCATION, FOR PROVIDE FOR CONCRETE SILLWAY.
- 7) STANDING SEAM METAL ROOF.
- 8) DASHED LINE DENOTES TRUCK WELL LOCATION. (See floor plan for location, see foundation plan for structural requirements.)

NORTH VIEW

