

Wilderwood Professional Center

1326 S. Ridgewood Avenue, Suite 21 & 22

Daytona Beach, FL 32114



OFFERING SUMMARY

SALE PRICE: \$120,000
[\$59.26 per SF]

CONDO FEES: \$509 per month

AVAILABLE SF: 2,025 SF

YEAR BUILT: 1988

PARCEL NO: 5340-29-00-0220

TRAFFIC COUNT: 33,000 AADT

ZONING: T-4 Tourist/Office/Retail

PROPERTY OVERVIEW

2,025 SF Office Condo For Sale in Wilderwood Professional Center. Corner unit with windows on three sides. Lobby, reception area, 7 offices, 2 restrooms, conference room, and breakroom. Functional floor plan with spacious offices. Two entry doors. Great for professional, financial planner, attorney, and CPA. Move-in ready. Condo fees \$509 per month.

LOCATION OVERVIEW

Located on the west side of Ridgewood Avenue and just north of Beville Road in Wilderwood Professional Center. 4.5 miles to Interstate 95 and Interstate 4. 1.9 miles to International Speedway Boulevard. 3.3 miles to Dunlawton Avenue.

John W. Trost, CCIM
Principal | Senior Advisor
386.301.4581
john.trost@svn.com



The information presented here is deemed to be accurate, but it has not been independently verified. We make no guarantee, warranty or representation. It is your responsibility to independently confirm accuracy and completeness. All SVN® offices are independently owned and operated.

Additional Photos



John W. Trost, CCIM
Principal | Senior Advisor
386.301.4581
john.trost@svn.com



The information presented here is deemed to be accurate, but it has not been independently verified. We make no guarantee, warranty or representation. It is your responsibility to independently confirm accuracy and completeness. All SVN® offices are independently owned and operated.

Additional Photos

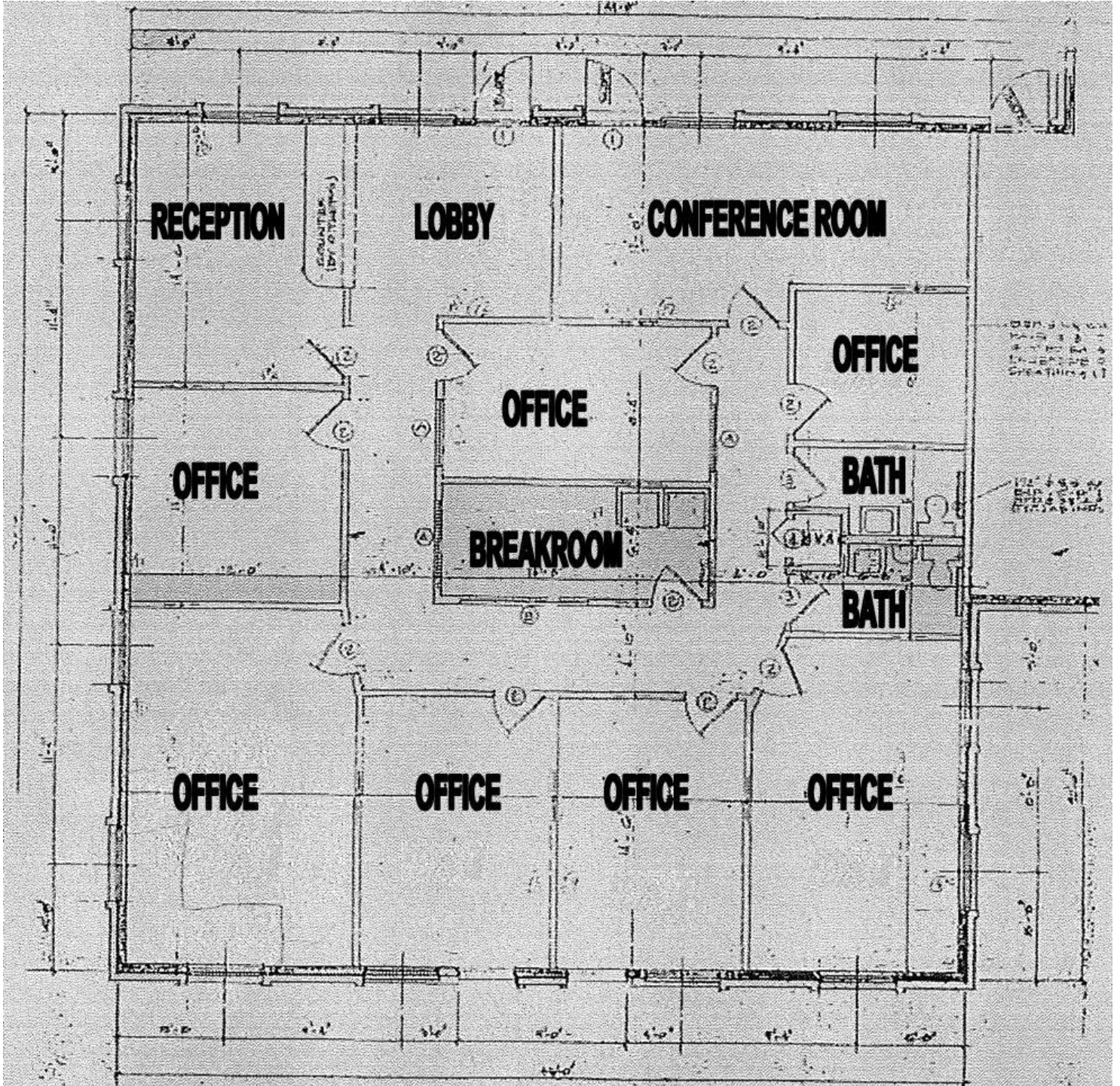


John W. Trost, CCIM
Principal | Senior Advisor
386.301.4581
john.trost@svn.com



The information presented here is deemed to be accurate, but it has not been independently verified. We make no guarantee, warranty or representation. It is your responsibility to independently confirm accuracy and completeness. All SVN® offices are independently owned and operated.

Floor Plan

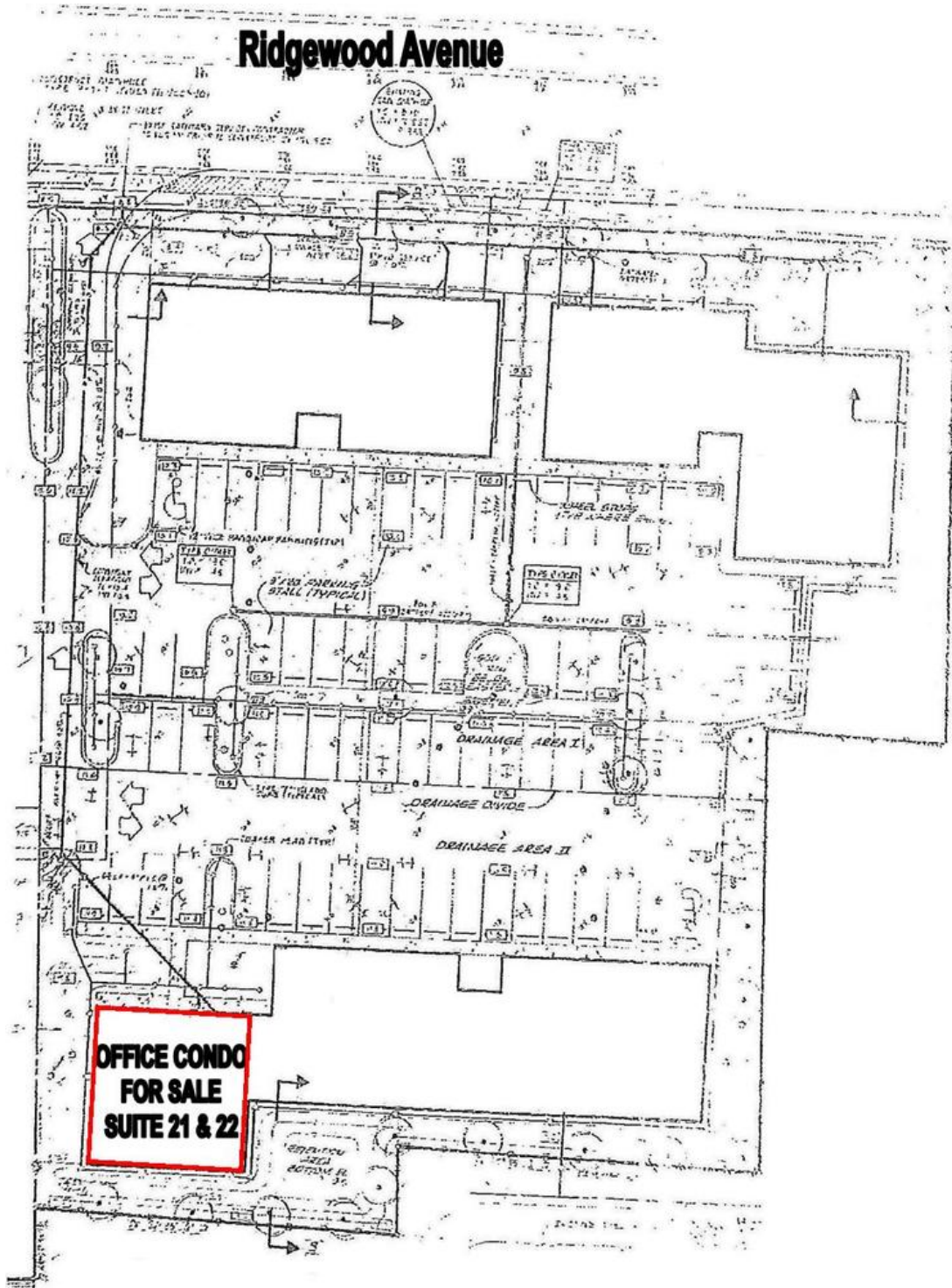


John W. Trost, CCIM
Principal | Senior Advisor
386.301.4581
john.trost@svn.com



The information presented here is deemed to be accurate, but it has not been independently verified. We make no guarantee, warranty or representation. It is your responsibility to independently confirm accuracy and completeness. All SVN® offices are independently owned and operated.

Site Plan

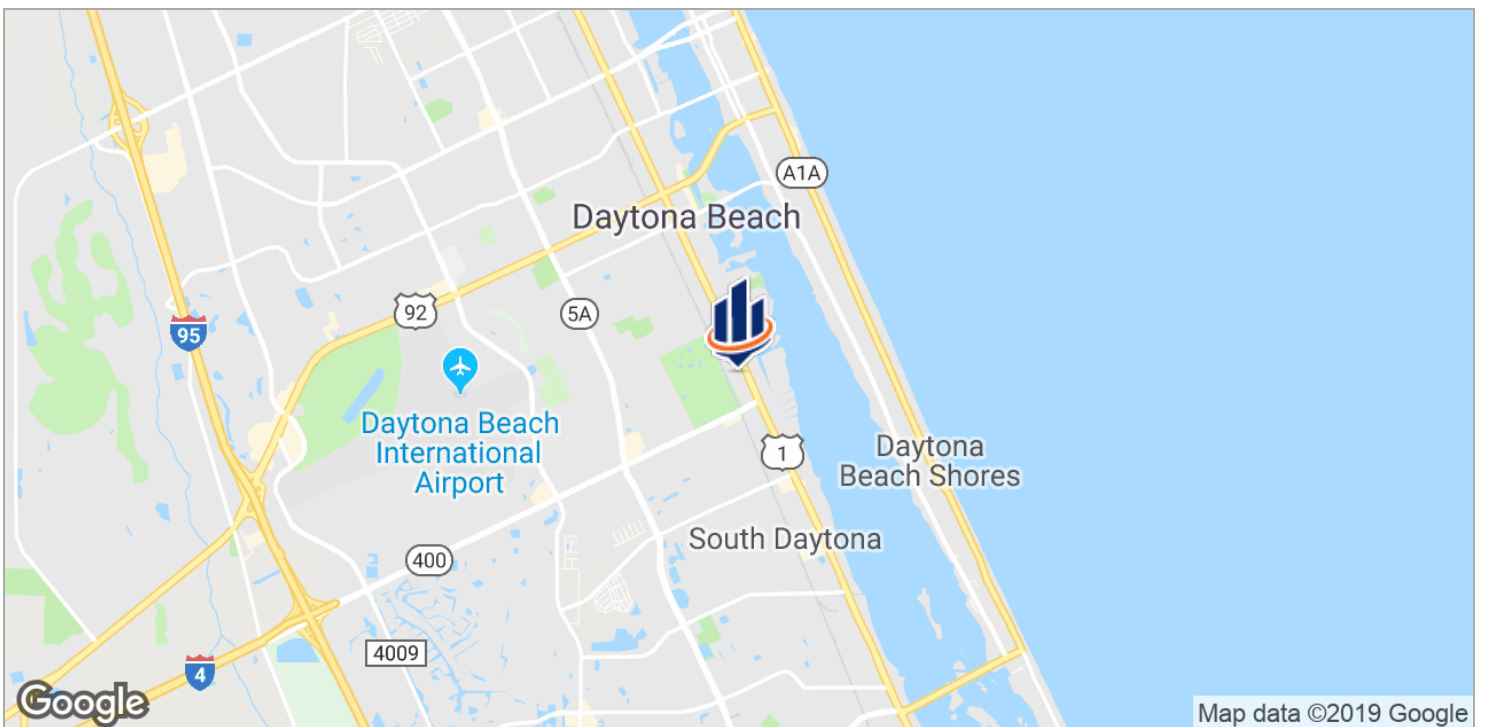
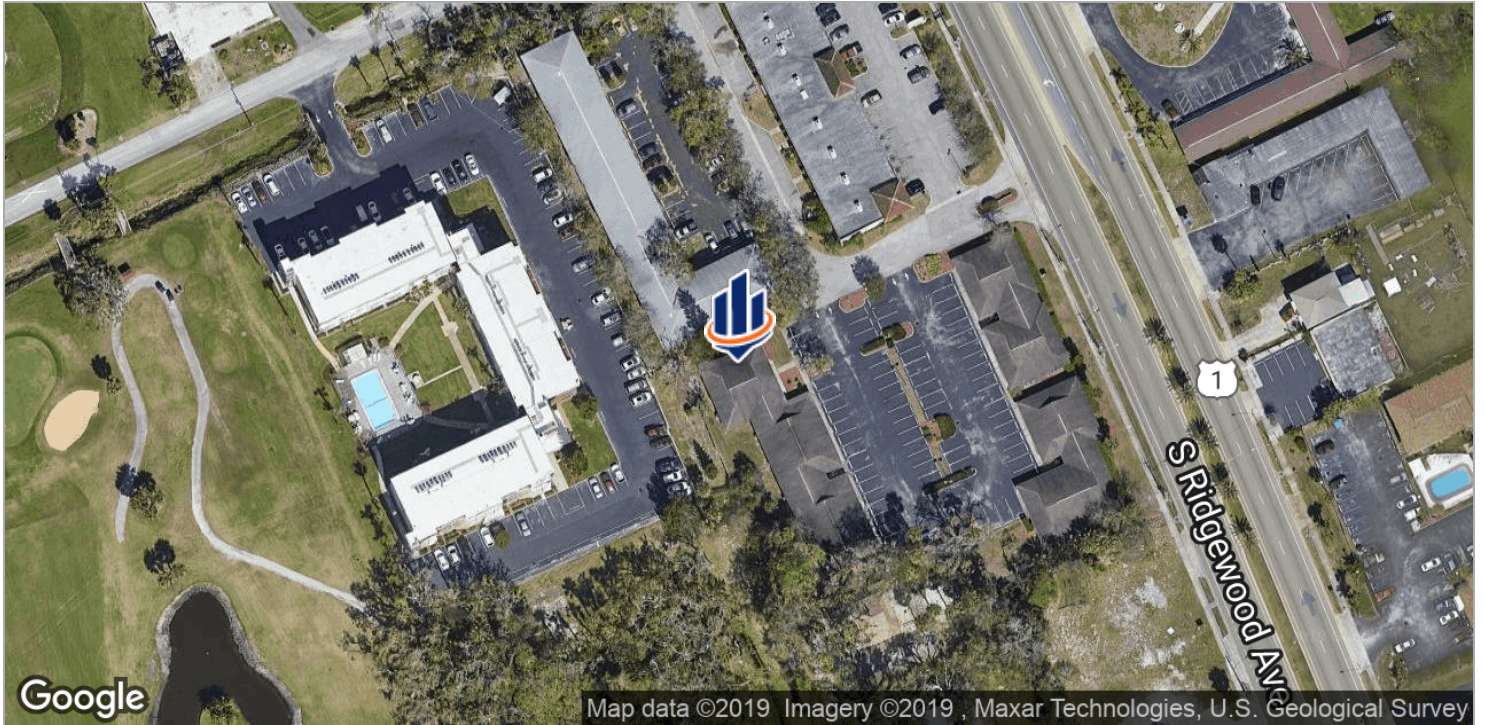


John W. Trost, CCIM
Principal | Senior Advisor
386.301.4581
john.trost@svn.com



The information presented here is deemed to be accurate, but it has not been independently verified. We make no guarantee, warranty or representation. It is your responsibility to independently confirm accuracy and completeness. All SVN® offices are independently owned and operated.

Location Maps

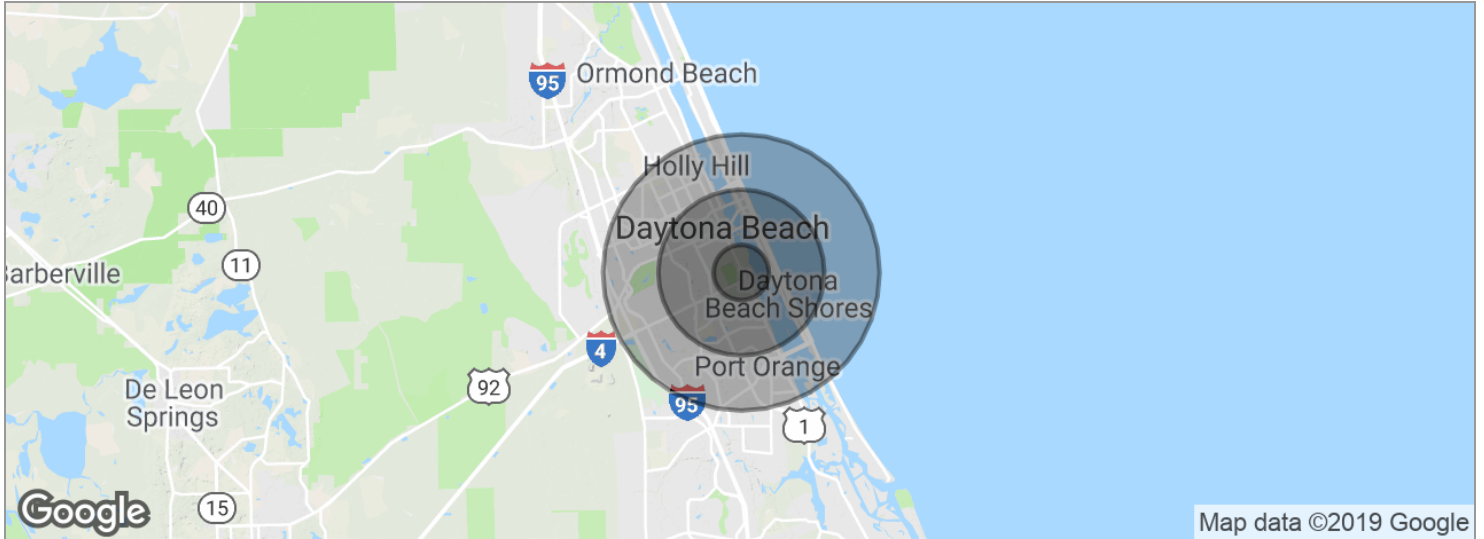


John W. Trost, CCIM
Principal | Senior Advisor
386.301.4581
john.trost@svn.com



The information presented here is deemed to be accurate, but it has not been independently verified. We make no guarantee, warranty or representation. It is your responsibility to independently confirm accuracy and completeness. All SVN® offices are independently owned and operated.

Demographics Map



POPULATION	1 MILE	3 MILES	5 MILES
Total population	8,306	56,348	122,720
Median age	42.5	41.2	41.4
Median age (Male)	41.7	39.5	39.3
Median age (Female)	42.5	43.3	43.8
HOUSEHOLDS & INCOME	1 MILE	3 MILES	5 MILES
Total households	3,956	23,961	51,293
# of persons per HH	2.1	2.4	2.4
Average HH income	\$38,878	\$42,691	\$44,734
Average house value		\$209,123	\$195,638

* Demographic data derived from 2010 US Census

John W. Trost, CCIM
 Principal | Senior Advisor
 386.301.4581
 john.trost@svn.com



The information presented here is deemed to be accurate, but it has not been independently verified. We make no guarantee, warranty or representation. It is your responsibility to independently confirm accuracy and completeness. All SVN® offices are independently owned and operated.