

384Q MERROW RD., TOLLAND, CT

Office Space For Lease



1,120 SF
\$20.00/SF Gross

- ⇒ On Route 195
- ⇒ Twin Ponds Centre
- ⇒ 1st Floor Space
- ⇒ Traffic Count: 12,100
- ⇒ Year Built: 2003
- ⇒ Zone: NCZ
- ⇒ Close to I-84 at Exit 68
- ⇒ Gas heat /Central AC
- ⇒ Public water
- ⇒ On Route to Storrs / UCONN Campus
- ⇒ Tenant pays for utilities

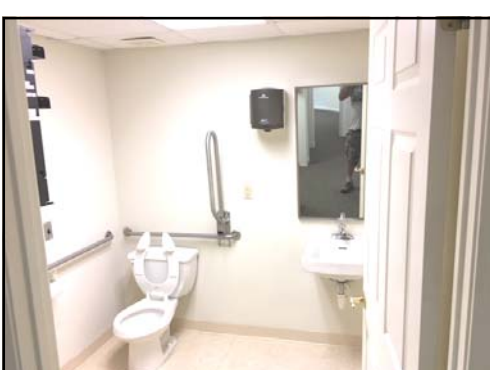
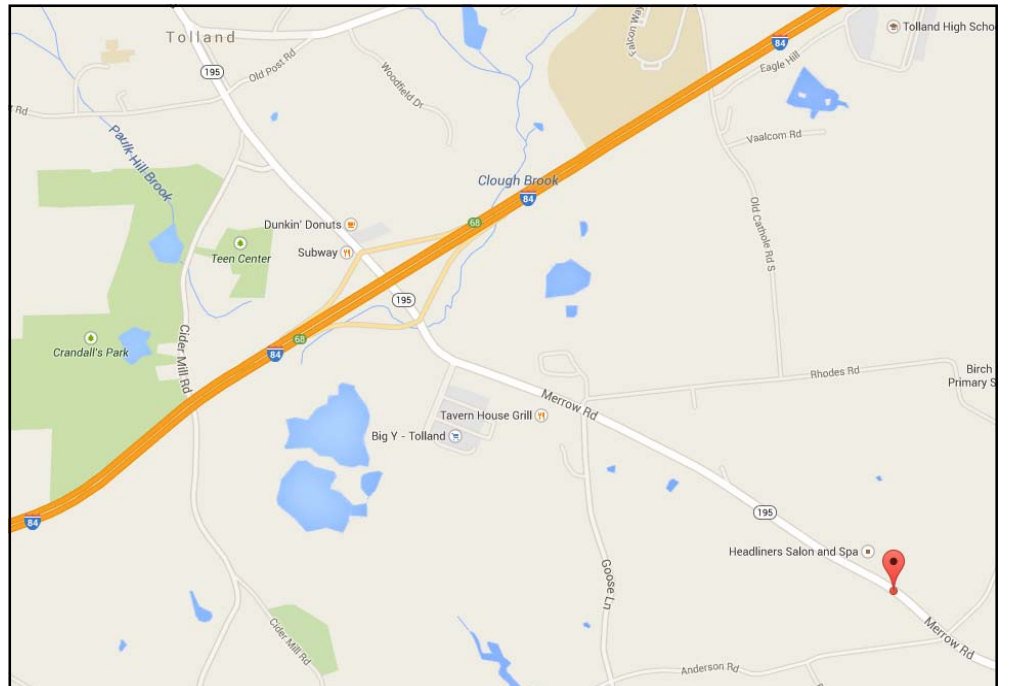


LYMAN

REAL ESTATE BROKERAGE & DEVELOPMENT
www.LymanRE.com

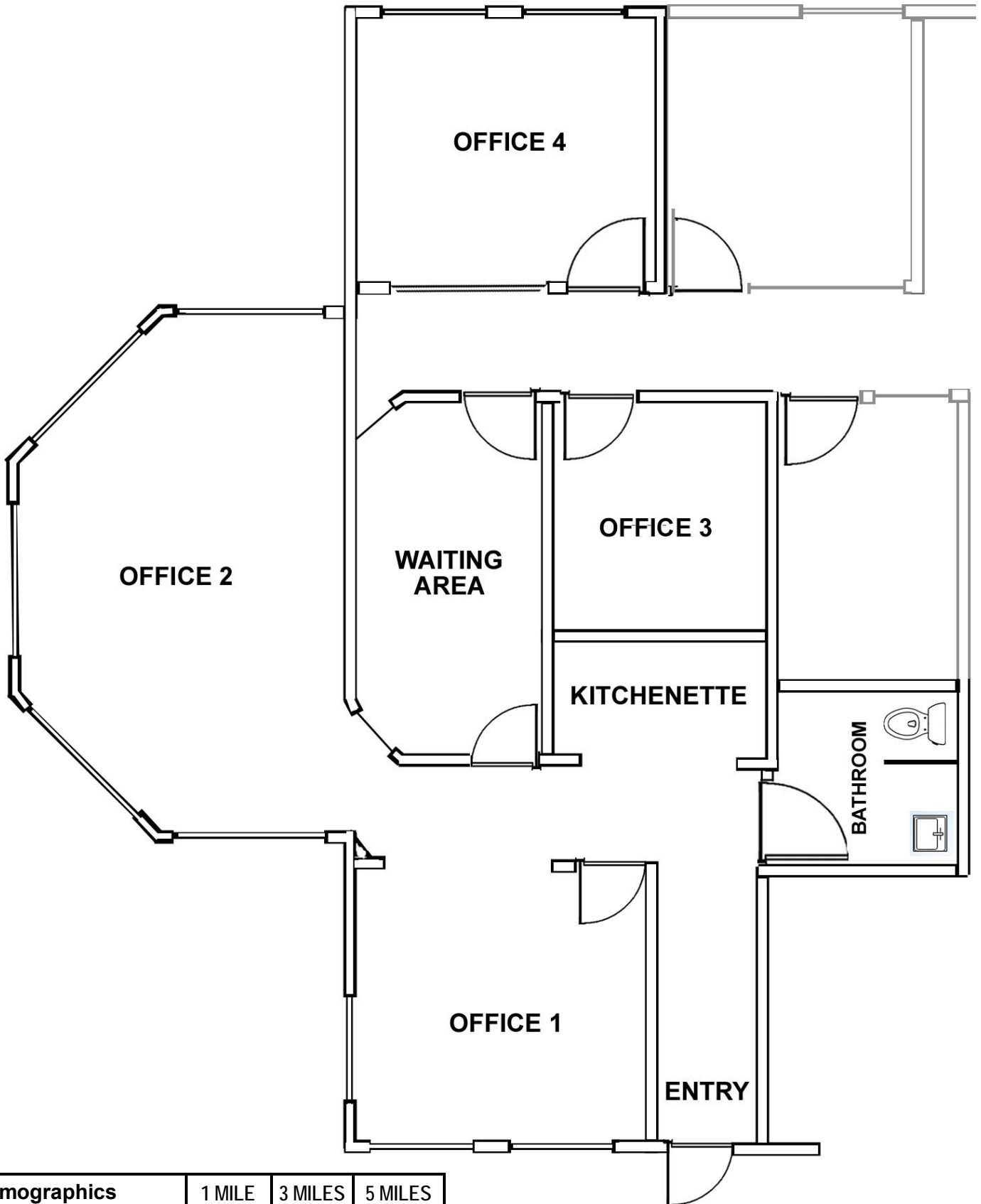
RON LYMAN

Main Office:
1160 Boston Post Rd.
Westbrook, CT 06498
Mailing Address:
73 Second Ave.
Westbrook, CT 06498
860-887-5000 x1 Office
860-884-4666 Cell
ronl@lymanre.com



All information stated is from sources deemed reliable and is submitted subject to errors, omission, changes of other terms and conditions, prior sales, financing or withdrawal without notice. Buyer/Tenant agents will be eligible for a portion of commission only if they have an existing signed representation.

FLOOR PLAN & DEMOGRAPHICS



FRONT

Demographics	1 MILE	3 MILES	5 MILES
Total Population	1,539	11,091	29,366
Total Households	582	4,092	10,587
Average Household Income	\$127,189	\$118,851	\$114,564