

# 384L MERROW RD., TOLLAND, CT

## Office Space For Lease at Twin Ponds Centre



**FOR LEASE: 2,040 SF @ \$25.00/SF Gross**



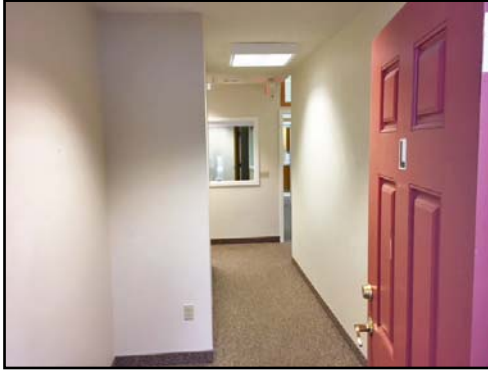
- ⇒ On Route 195
- ⇒ 1st Floor Space
- ⇒ Zone: NCZ
- ⇒ Close to I-84 at Exit 68
- ⇒ Public water
- ⇒ On Route to Storrs UCONN Campus

# LYMAN

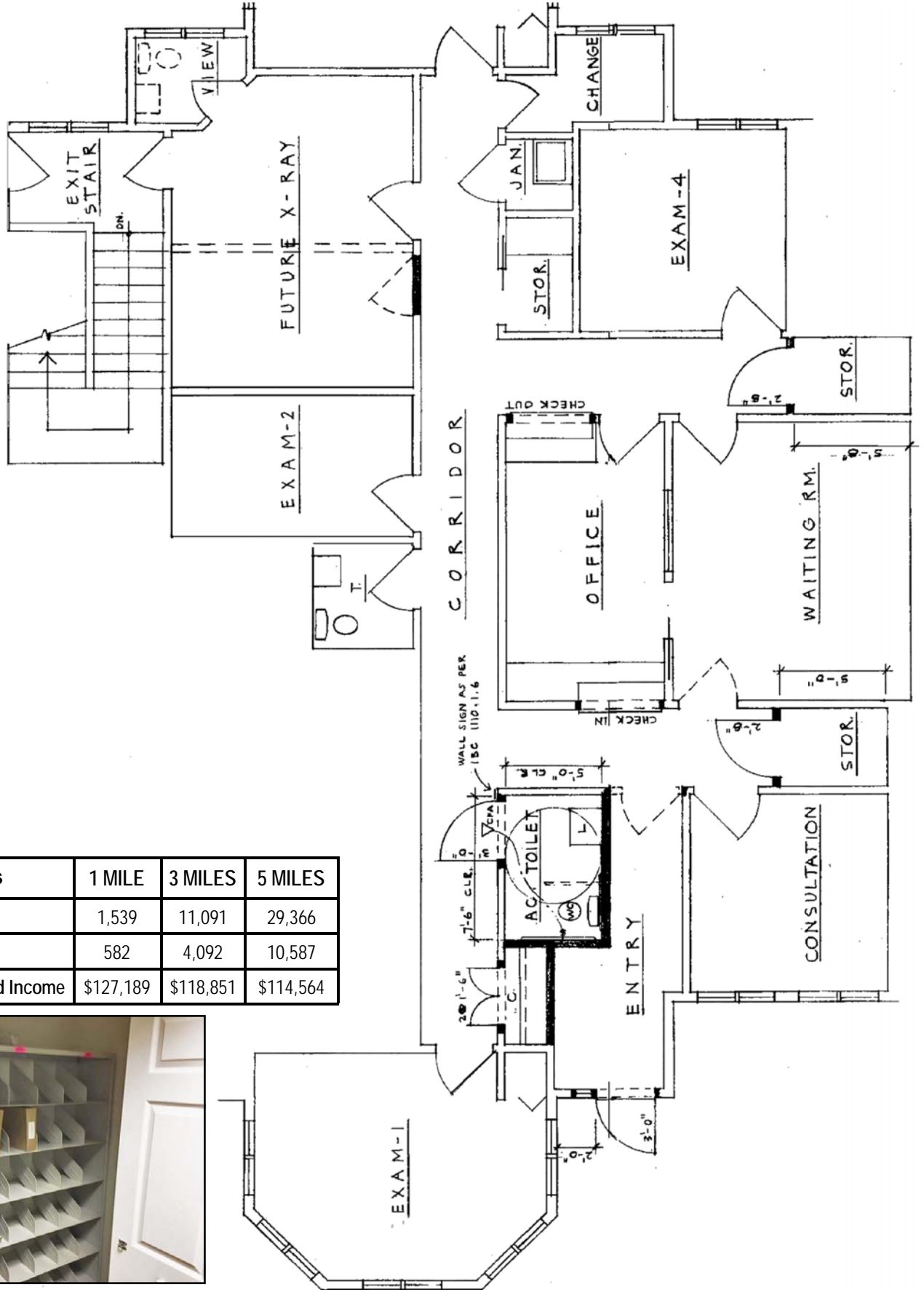
REAL ESTATE BROKERAGE & DEVELOPMENT  
[www.LymanRE.com](http://www.LymanRE.com)

**RON LYMAN**

Main Office:  
1160 Boston Post Rd.  
Westbrook, CT 06498  
Mailing Address:  
73 Second Ave.  
Westbrook, CT 06498  
860-887-5000 x1 Office  
860-884-4666 Cell  
[ronl@lymanre.com](mailto:ronl@lymanre.com)



# FLOOR PLAN & DEMOGRAPHICS



Demographics	1 MILE	3 MILES	5 MILES
Total Population	1,539	11,091	29,366
Total Households	582	4,092	10,587
Average Household Income	\$127,189	\$118,851	\$114,564



All information stated is from sources deemed reliable and is submitted subject to errors, omission, changes of other terms and conditions, prior sales, financing or withdrawal without notice. Buyer/Tenant agents will be eligible for a portion of commission only if they have an existing signed representation.