



Major Price Reduction

Property Details

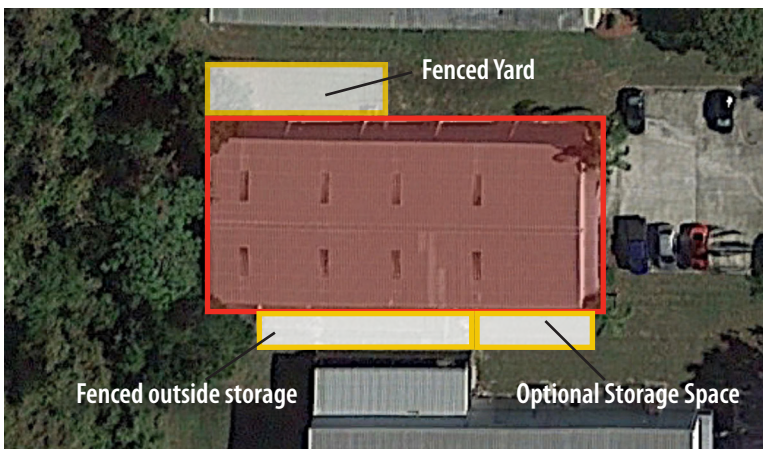
- 6,875± sf; 0.50± acres
- 12' x 12' grade-level loading door
- 16' clear height
- 240v power in warehouse
- Located in the Orange Blossom Industrial Park
- IND-2/IND-3 zoning
- Built in 1990

For more information, please contact:

Lawson Dann, Senior Vice President
D 407 440 6646
C 407 342 4698
lawson.dann@avisonyoung.com

Nathan Eissler, CCIM, Vice President
D 407 440 6658
C 407 342 7494
nathan.eissler@avisonyoung.com

135 W Central Blvd
Suite 700
Orlando, FL 32801
407 219 3501

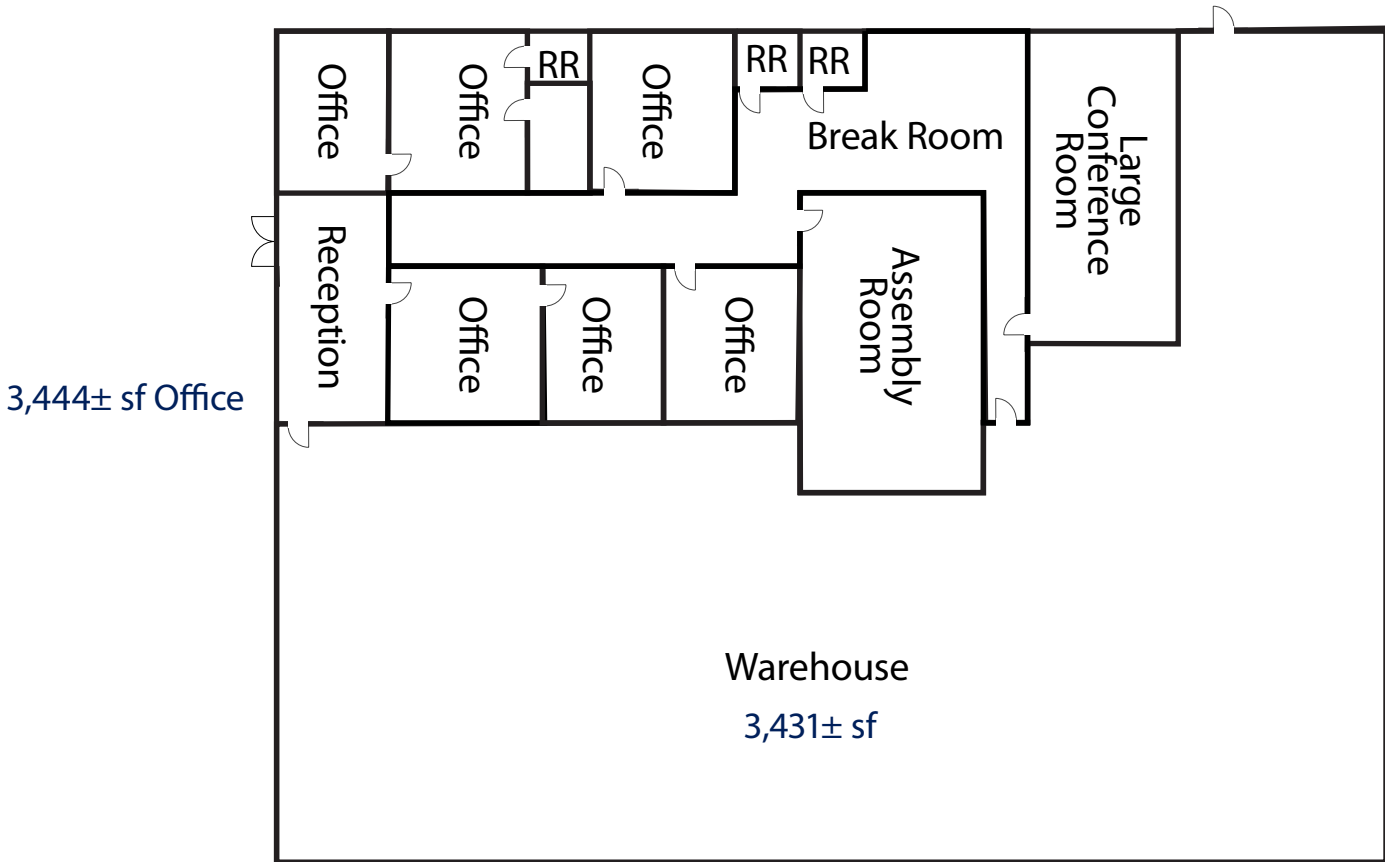


ASKING PRICE ~~\$979,000.00~~

\$860,000.00

Property Floorplan

6,875± sf



avisonyoung.com

Lawson Dann, Senior Vice President
D 407 440 6646
C 407 342 4698
lawson.dann@avisonyoung.com

Nathan Eissler, CCIM, Vice President
D 407 440 6658
C 407 342 7494
nathan.eissler@avisonyoung.com