

Heart of Lakeland :: Restaurant | Nightclub | Church

COMMERCIAL LAKEFRONT PROPERTY



- 1330 e. Memorial Blvd. Lakeland FL 33801
- Freestanding **8,436** SF Restaurant Building, Zoned C2
- Over 2,000 SF Patio area for Outside Seating
- Phenomenal Visibility and Signage :: Mature Landscaping
- Perfect for many uses like Church, Retail, Nightclub, Office, Special Events

OFFERED FOR SALE AT:

\$750,000!

LISTING AGENT: Tina Marie Eloian, CCIM • P: 813-997-4321 • F: 813-930-0946 • E: Tina@FloridaCommercialGroup.com



*Locally Owned,
Globally Recognized*



401 E. Palm Avenue ❖ Tampa, FL 33602 ❖ www.FloridaCommercialGroup.com

Sales • Investments • Leasing • Property Management



Each Office Individually Owned and Operated

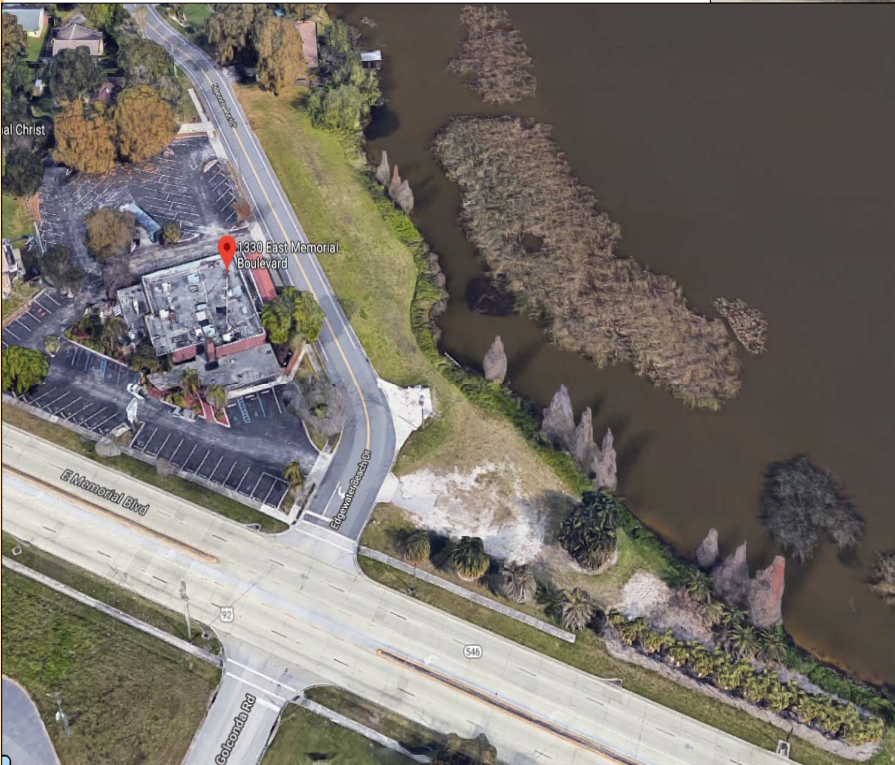
This information is from sources deemed to be reliable. We are not responsible for misstatements of facts, errors or omissions, prior sale, change of price and/or terms or withdrawal from the market without notice. Buyer shall verify all information with their own representatives as well as state and local agencies.

LISTING FEATURES

INVESTMENT HIGHLIGHTS

INVESTMENT HIGHLIGHTS

- Longstanding Building. The First “ Red Lobster”
- Full Commercial Kitchen
- Phenomenal Exposure and Great Signage
- Over 6,358 SF of indoor space
- 2000 SF of outside seating area
- Potential Deck and Dock (overlooking Lake Parker)
- Current Use: Restaurant/ Nightclub
- Over 100 Parking Spaces



LISTING AGENT: Tina Marie Eloian, CCIM • P: 813-997-4321 • F: 813-930-0946 • E: Tina@FloridaCommercialGroup.com



*Locally Owned,
Globally Recognized*



401 E. Palm Avenue ❖ Tampa, FL 33602 ❖ www.FloridaCommercialGroup.com

Sales • Investments • Leasing • Property Management



Each Office Individually Owned and Operated

This information is from sources deemed to be reliable. We are not responsible for misstatements of facts, errors or omissions, prior sale, change of price and/or terms or withdrawal from the market without notice. Buyer shall verify all information with their own representatives as well as state and local agencies.