

FOUR CORNERS AREA PROPERTY

7.93± acres

Osceola County, FL

SOLD!



LOCATION

Located on Westside Boulevard in Osceola County, Florida

SIZE

7.93± acres

PRICE

NOW: \$1,100,000

WAS: \$1,425,000

ZONING

Mixed-use, short-term overlay

ROAD FRONTAGE

610'± on Westside Boulevard

UTILITIES

Duke Energy and Toho Water Authority

DESCRIPTION

Prime site for townhomes, light commercial, charter school, church, etc. This property is inside the short-term overlay area for Osceola County. Quality site and location that is priced to sell. Southeast of the property and across Westside Boulevard is a K-8 school.

PARCEL IDs

07-25-27-0000-0013-0000

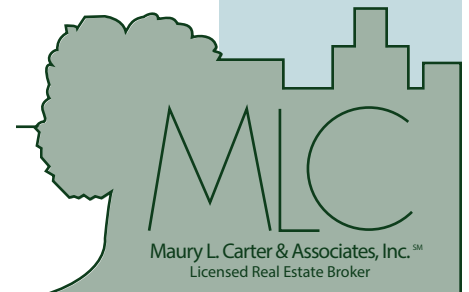
07-25-27-0000-0018-0000

Offering subject to errors, omission, prior sale or withdrawal without notice.

LAND FOR SALE

Commercial Real Estate Investments | Management | Brokerage | Development | Land

Maury L. Carter & Associates, Inc.
407-422-3144 | www.maurycarter.com

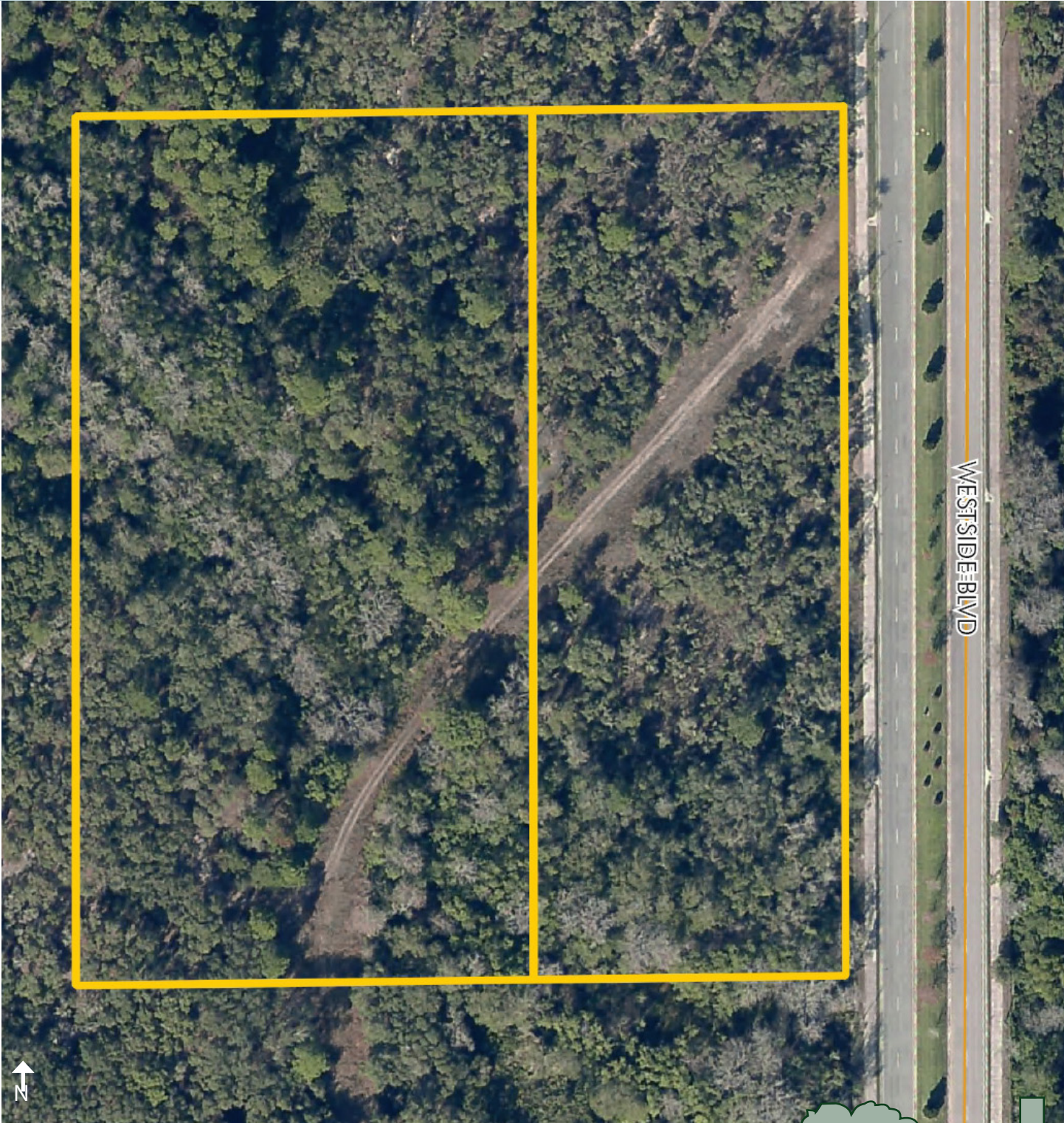


FOUR CORNERS AREA PROPERTY

7.93± acres

Osceola County, FL

SOLD!



PROPERTY MAP

— Commercial Real Estate Investments | Management | Brokerage | Development | Land

Maury L. Carter & Associates, Inc.
407-422-3144 | www.maurycarter.com

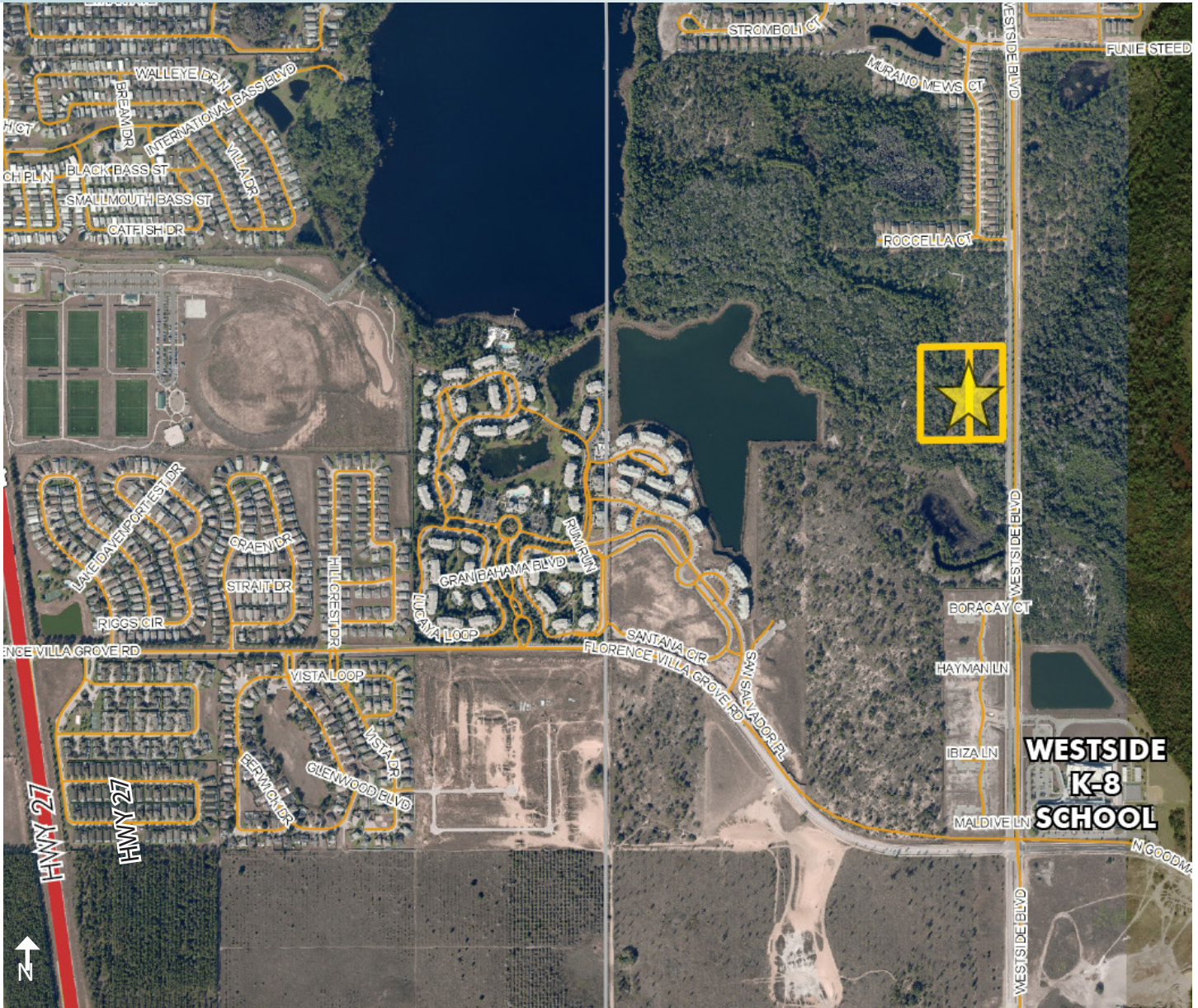


FOUR CORNERS AREA PROPERTY

7.93± acres

Osceola County, FL

SOLD!



REGIONAL MAP

Commercial Real Estate Investments | Management | Brokerage | Development | Land

Maury L. Carter & Associates, Inc.
407-422-3144 | www.maurycarter.com

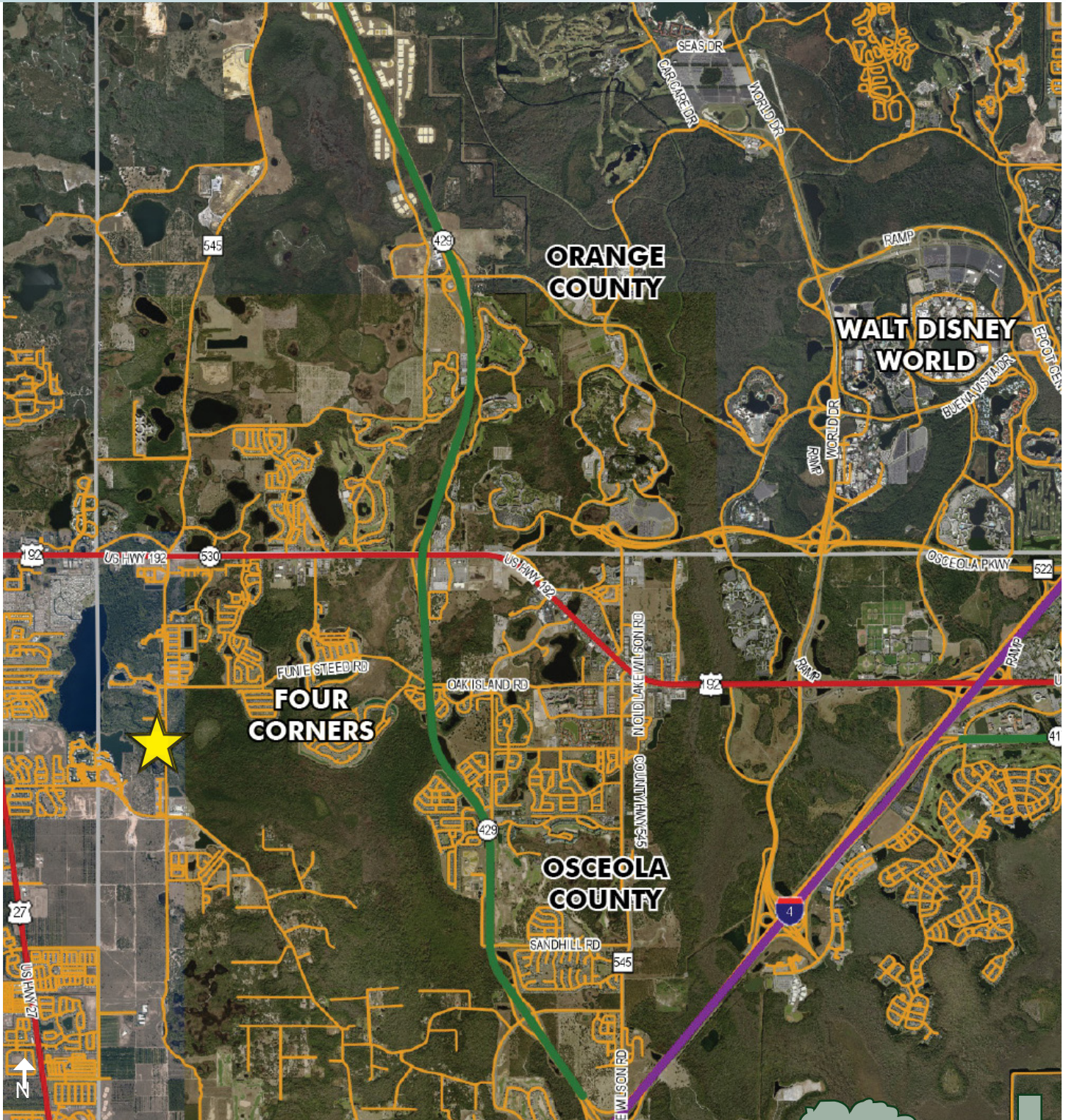


FOUR CORNERS AREA PROPERTY

7.93± acres

Osceola County, FL

SOLD!



LOCATION MAP

— Commercial Real Estate Investments | Management | Brokerage | Development | Land

Maury L. Carter & Associates, Inc.
407-422-3144 | www.maurycarter.com

