

FOR SALE - Neighborhood Commercial or Multifamily Site

PARCEL AVAILABLE

5405 US 19, Palmetto, FL 34221



Price Reduced

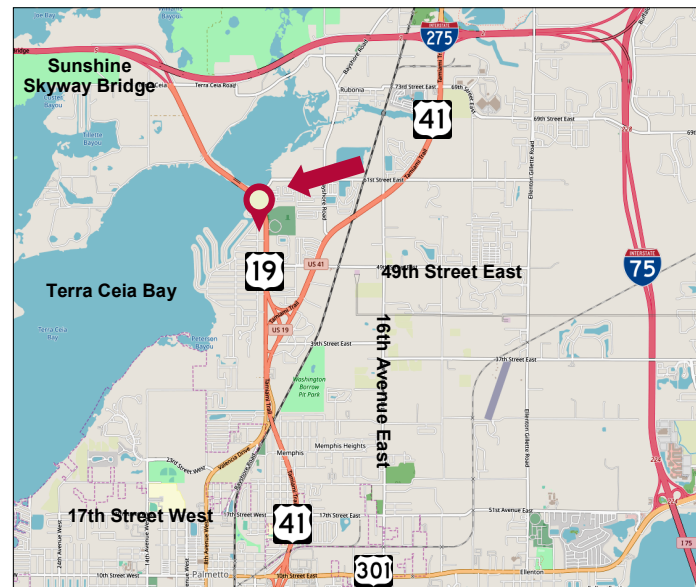


FEATURES

- ❖ 1.398 Acres
- ❖ 300' Frontage on US 19 N
- ❖ Manatee County Zoning:
NCM — Neighborhood Commercial Mixed Use
FLU—Res 9
- ❖ Parcel ID: 2204900001
- ❖ Northbound access via Median Opening
- ❖ Utilities:
Water — 12", located across US 19
Sewer — 8", located along parcel's west side
- ❖ Asking Price: \$182,700

Demographics	1-mile	3-mile	5-mile
Total Population	3,537	32,788	89,601
Median Age	40.54	43.97	43.52
Households	1,581	12,495	36,141

LOCATION MAP

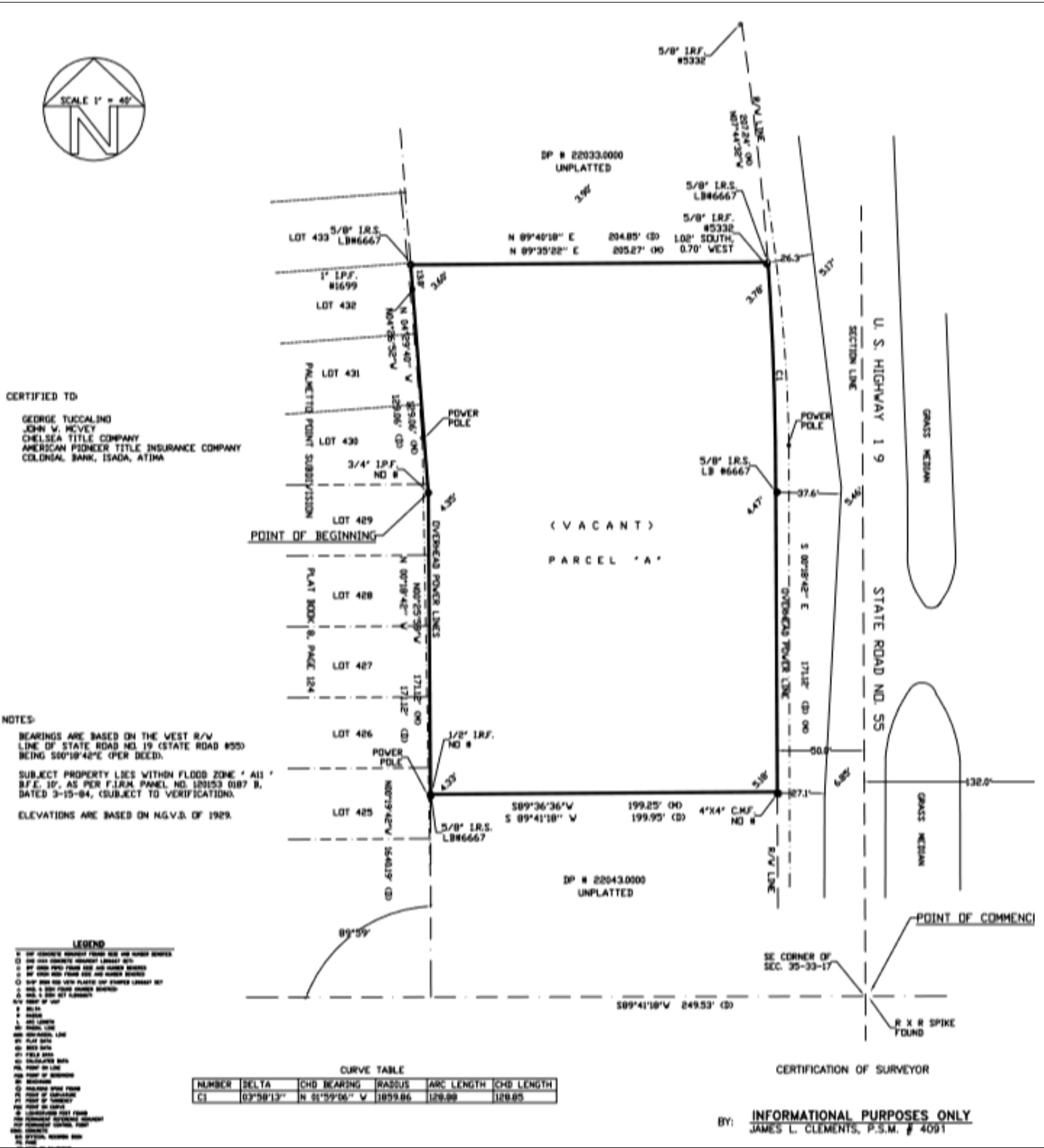


Elliott M. Ross, CCIM
C: 727.639.3800
elliott@rossrealtytampabay.com

ROSS REALTY GROUP, INC.
50 Sandpiper Rd.
Tampa, FL 33609

PARCEL AVAILABLE

5405 US 19, Palmetto, FL 34221



Any information given herein is obtained from sources considered reliable. However, we are not responsible for misstatement of facts, errors, omissions, prior sale, withdrawal from market, modification of mortgage commitment, terms and considerations, or change in price without notice. The information supplied herein is for informational purposes only and shall not contain a warranty or assurance that said information is correct. Any person intending to rely upon the information supplied herein should verify said information independently.