

- Industrial
- Commercial
- Office
- Land
- Business

FOR SALE

Vacant Land 9.59 Acres

Potential Low Density Residential Development

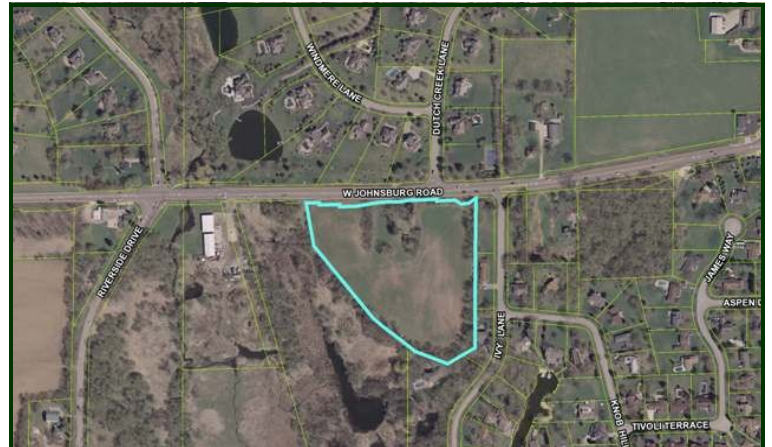
765' of frontage on Johnsburg Road. Property is presently zoned AG with a future use of low density residential and private open space in the environmentally sensitive areas per Johnsburg's comprehensive plan. Located just west of Downtown Johnsburg, minutes to Route 31 and major retailers; Walmart, Best Buy, Kohl's, Dick's Sporting Goods, Home Depot and more! Three miles north of Route 120 and the town of McHenry. For additional information contact listing brokers. Visit Premier Commercial Realty website to see more listings.

MLS: 09895846

PROPERTY SPECIFICATIONS

Description:	Land
Land Size:	9.59 Acres
Possession:	At Closing
Topography:	Level
Environmental Status:	TBA
Utilities:	Nearby
Sewer: Septic	Water: Well
Frontage Dimensions:	765'
Zoning:	AG
Real Estate Taxes:	\$695.04 (2018)
Sale Price:	\$325,000 (\$33,889 / ac.)
REDUCED	\$190,840
	\$19,900/ac \$0.46 psf

No warranty or representation is made as to the accuracy of the foregoing information. Terms of sale or lease and availability are subject to change or withdrawal without notice. This document is for information purposes only. No offer of sub-agency is being made.



PRICE REDUCED ONLY \$0.46 psf

Demographics	1 mile	3 miles	5 miles
Avg. HH Income	\$82,758	\$71,966	\$70,796
Population	3,029	26,420	71,008

TRAFFIC COUNTS: 14,200 Vehicles per Day



Directions: Route 120 to Route 31 to Johnsburg Road. East (right) to property on corner of Johnsburg and Ivy Lane.

PIN: 09-13-301-019

August 27, 2019

[CLICK HERE
TO VISIT OUR WEBSITE](#)

www.PremierCommercialRealty.com

- Industrial
- Commercial
- Office
- Land
- Business

2819 W Johnsburg Road
Johnsburg, IL 60051

9.59 Acres

Potential Low Density Residential Development

765' of frontage on Johnsburg Road. Property is presently zoned AG with a future use of low density residential and private open space in the environmentally sensitive areas per Johnsburg's comprehensive plan. Located just west of Downtown Johnsburg, minutes to Route 31 and major retailers; Walmart, Best Buy, Kohl's, Dick's Sporting Goods, Home Depot and more! Three miles north of Route 120 and the town of McHenry.

