



Gerchick Real Estate - HOME OF TEAM GERCHICK

"Make the Market Work for YOU"™

MESA FOURPLEX WITH TWO BEDROOM UNITS

\$595,000

6-12 E. Ingram Street, Mesa, AZ 85201

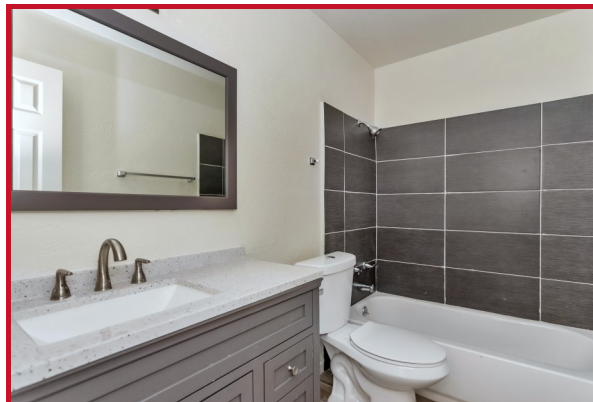


HIGHLIGHTS:

- New wood grain tile
- New Cabinets
- New Asphalt Parking
- New Windows
- New Landscaping
- New Fixtures
- Covered Parking
- High Rents

DETAILS

New higher rents of \$1,150 reflect-Check out this beautifully remodeled fourplex! New, higher rents reflect the real demand for affordable and remodeled fourplexes. Updates include: windows, doors, ceramic tile flooring, kitchen cabinets with granite countertops, recessed lights, ceiling fans, new bathrooms, fencing, paint, faux wood blinds, and much more! Four 2 bedroom/1 bath units have microwave, dishwasher, front yards, carport parking, and storage unit. A common laundry area next to a common patio area gives a community feeling for the tenants. The building is all-electric, and there is no gas at the property--a real plus for tenants. New asphalt will be installed to top off a fresh, clean look to this contemporary-designed fourplex.



CROSS STREETS:

Country Club and McKellips

DIRECTIONS:

South on Country Club, East on McLellan, North on Center, East on Ingram.



Linda Gerchick,
CCIM
Designated Broker
Office: 602-256-1415
Cell: 602-688-9279



CCIM Institute
Equipping the world's best minds in commercial real estate



**Gerchick
Real Estate**

This document/email has been prepared by Team Gerchick for advertising and general information only. Gerchick Real Estate—Home of Team Gerchick make no guarantees, representations or warranties of any kind, expressed or implied, regarding the information including, but not limited to, warranties of content, accuracy and reliability. Any interested party should undertake their own inquiries as to the accuracy of the information. Gerchick Real Estate—Home of Team Gerchick exclude unequivocally all inferred or implied terms, conditions and warranties arising out of this document and excludes all liability for loss