

LAKE COUNTY ROUND LAKE ROAD

30± acres

Lake County, FL

LAND FOR SALE



LOCATION/DESCRIPTION

Residential and commercial development land! Located on just to the south of SR 46, in east Lake County. The Wekiva Parkway Expansion (2020), the final leg in Orlando's beltway connecting to Interstate 4, will create direct and immediate access to the site by widening SR 46 and creating an interchange north to the subject property. The site is just south of the Mount Dora Employment Center, a hub of economic and employment growth consisting of approx. 900 acres along the Parkway expansion. The employment center is expected to create approx. 13,000 new jobs.

SIZE

30± acres

PRICE

\$4,500,000 (\$150,000/acre)

FUTURE LAND USE

Multi-family, commercial and office

Offering subject to errors, omission, prior sale or withdrawal without notice.

ADDITIONAL PARCEL

Additional 298 acres available to the east. Link to flyer: <https://www.maurycarter.com/wp-content/uploads/2019/07/Residential-Commercial-Development-Land-298-Acres.pdf>

— Commercial Real Estate Investments | Management | Brokerage | Development | Land

Maury L. Carter & Associates, Inc.
407-422-3144 | www.maurycarter.com



LAKE COUNTY ROUND LAKE ROAD

30± acres

Lake County, FL



PROPERTY MAP

— Commercial Real Estate Investments | Management | Brokerage | Development | Land

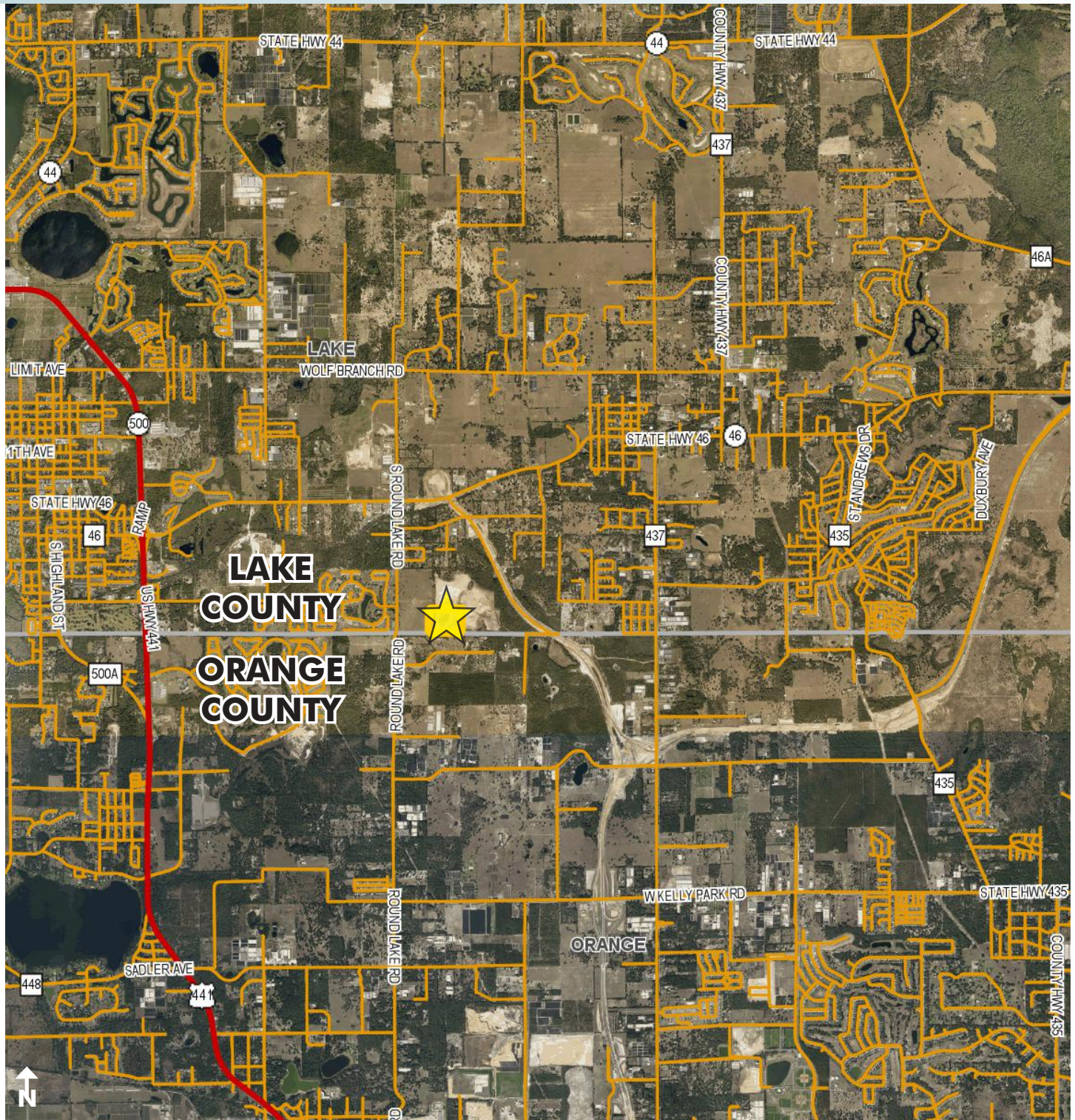
Maury L. Carter & Associates, Inc.
407-422-3144 | www.maurycarter.com



LAKE COUNTY ROUND LAKE ROAD

30± acres

Lake County, FL



VICINITY MAP

— Commercial Real Estate Investments | Management | Brokerage | Development | Land

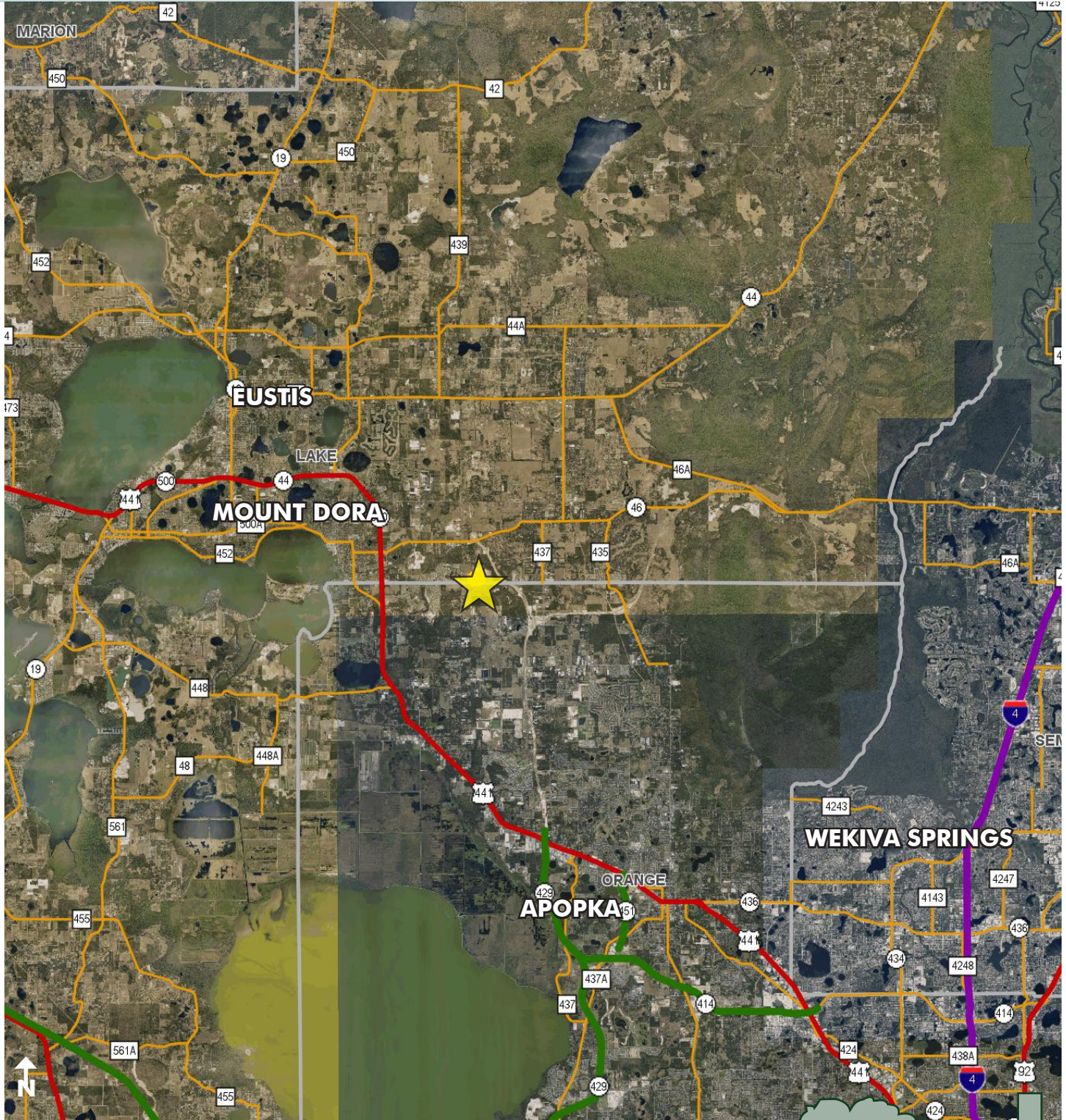
Maury L. Carter & Associates, Inc.
407-422-3144 | www.maurycarter.com



LAKE COUNTY ROUND LAKE ROAD

30± acres

Lake County, FL



LOCATION MAP

— Commercial Real Estate Investments | Management | Brokerage | Development | Land

Maury L. Carter & Associates, Inc.
407-422-3144 | www.maurycarter.com

