

FOR SALE

3724 EGLIN | RAPID CITY SD 57701

PROPERTY SUMMARY

LIST PRICE: \$575,000

PRICE PER SQ. FT.: \$6.50

AVAILABLE SF: 88426.8

LOT SIZE: 2.03

ZONING: General Commercial

PRICE REDUCED!

Was \$619,000, Now \$575,000

Great Interior lot on Eglin just off of the high traffic high impact Elk Vale Road intersection. The East lot line is at the second curb cut on the North side of Eglin (where N Turbine begins to the South). Subway and Scooter's Coffee are to the East in a new building. To the North is Dakota Steakhouse. To the East is McDonalds, Arbys, Taco Bell, Watiki Waterpark, multiple hotels, Black Hills State University-Rapid City and a new residential community. City utilities at street.



RANDY OLIVIER, CCIM

Broker

(605) 430-6246 (Mobile) | (605) 343-7653 (Office)
randyolivier@remax.net | <https://www.olivierrealestate.com/>

RE/MAX ADVANTAGE

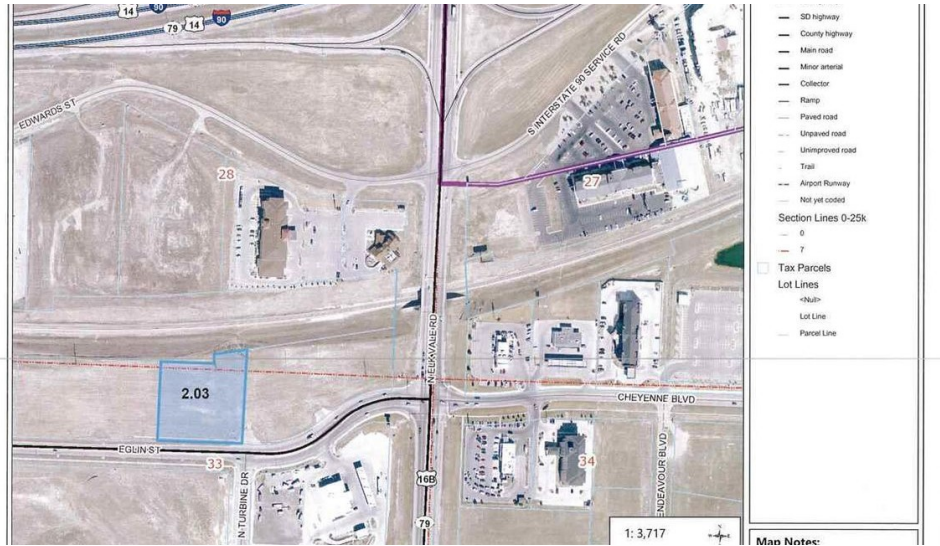
1331 W. Omaha St. Suite 200, Rapid City, SD 57701

©2019 RE/MAX, LLC. All Rights Reserved. Pub 6/19 Each Office Independently Owned and Operated.



RE/MAX
COMMERCIAL®

FOR SALE 3724 EGLIN



RANDY OLIVIER, CCIM

Broker

(605) 430-6246 (Mobile) | (605) 343-7653 (Office)
randyolivier@remax.net | <https://www.olivierrealestate.com/>

RE/MAX ADVANTAGE

1331 W. Omaha St. Suite 200, Rapid City, SD 57701

©2019 RE/MAX, LLC. All Rights Reserved. Pub 6/19 Each Office Independently Owned and Operated.

