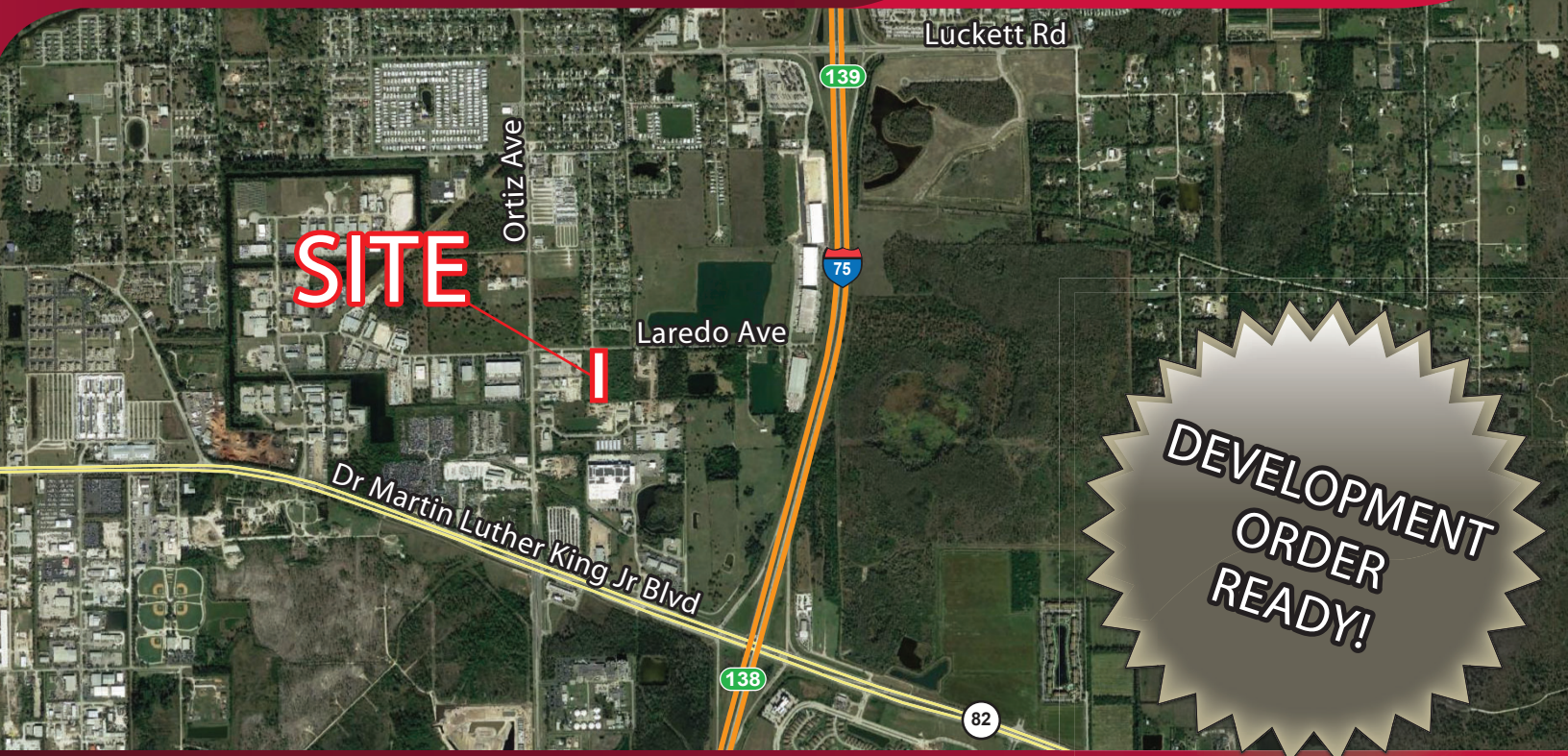


# LAND FOR SALE

## 2.5 ACRES WITH D.O. IN PLACE

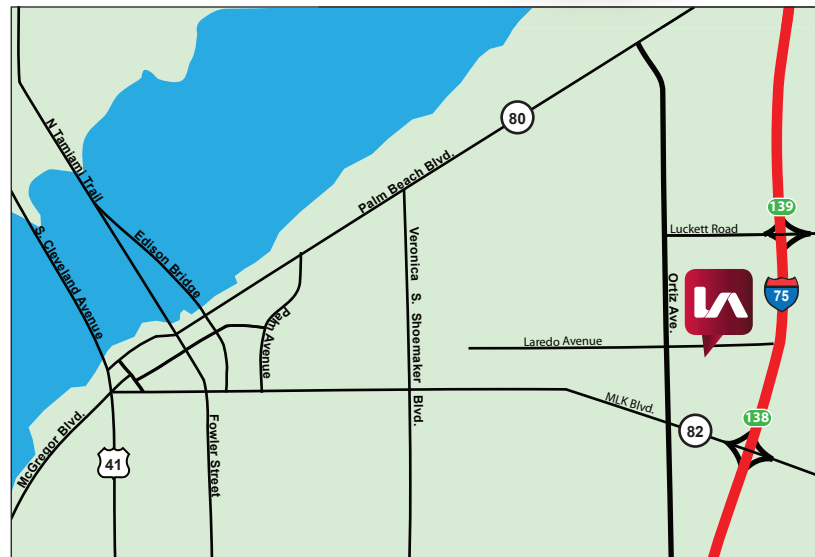
8930 LAREDO AVENUE, FORT MYERS, FL 33905



- **SIZE: 2.5 AC**
- **PRICE: \$435,600 (\$4.00 / SF)**

### PROPERTY FEATURES

- Zoned Light Industrial ([click here for permitted uses](#))
- Excellent Location One Mile to the I-75 & Dr Martin Luther King Jr Blvd Interchange (Exit 138)
- Development Order in Place for a Warehouse Facility
- Development Order Included in Sale Price
- Owners Will Also Consider Build-to-Suit for Lease



For more information please contact:

**Derek Bornhorst, SIOR, CCIM**  
Principal  
239.210.7607  
dbornhorst@lee-associates.com

**Bob Johnston, SIOR**  
Principal  
239.210.7601  
bjohnston@lee-associates.com

**Jerry Messonnier, SIOR**  
Principal  
239.210.7610  
jmessonnier@lee-associates.com

All information furnished regarding property for sale, rental or financing is from sources deemed reliable, but no warranty or representation is made to the accuracy thereof and same is subject to errors, omissions, change of price, or other conditions prior to sale, lease or financing or withdrawal without notice. No liability of any kind is to be imposed on the broker herein.

YOUR LOCAL MARKET **EXPERT**

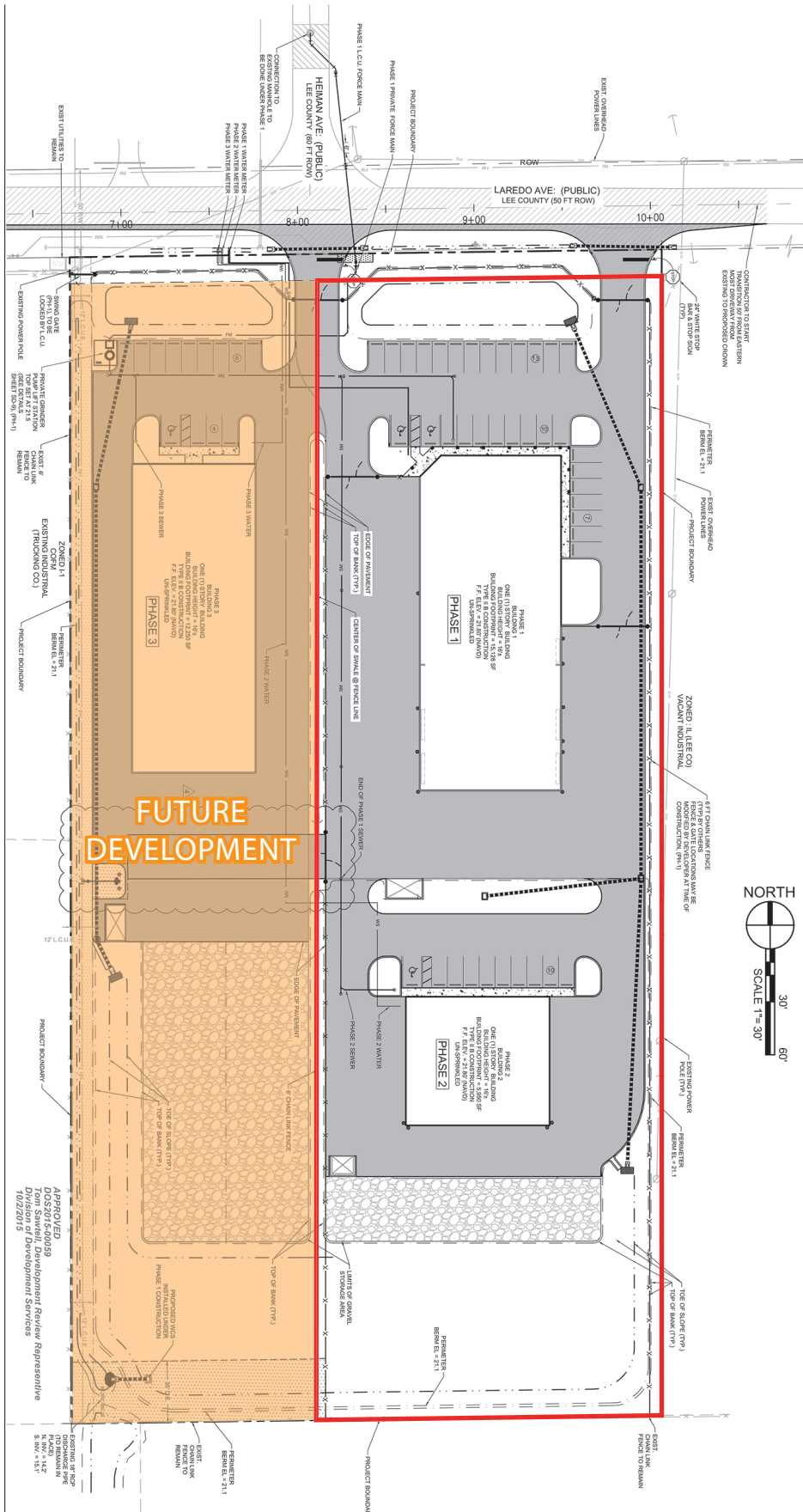
6300 Techster Boulevard, Suite 1 | Fort Myers, Florida 33966 | Lee-FL.com



# LAND FOR SALE

## 2.5 ACRES WITH D.O. IN PLACE

8930 LAREDO AVENUE, FORT MYERS, FL 33905



- 2.5 +/- Acres
- Planned as Warehouse Facility with Covered Overhang
- Crushed Rock, Outdoor Fenced Storage Area
- An Additional Adjacent 2.5 +/- Acres Available