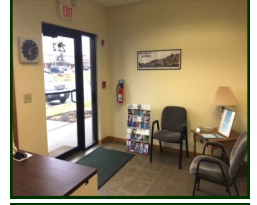


FOR SALE

PROFESSIONAL OFFICE CONDO 625 SF

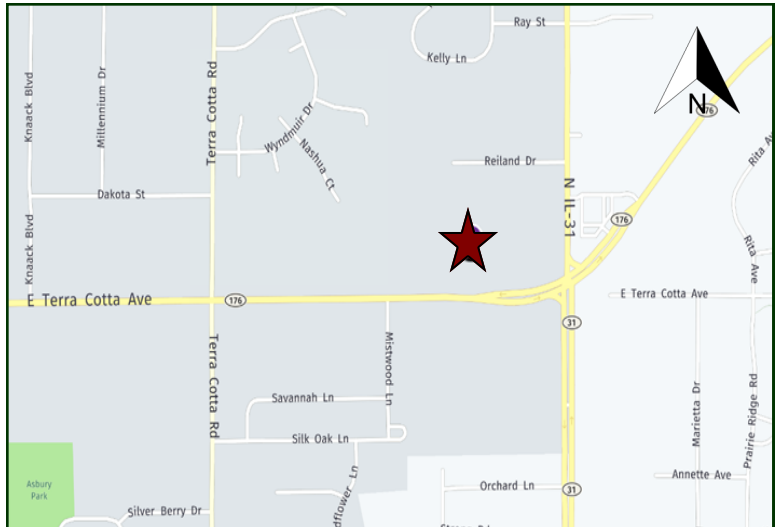
Rare sized (25'x25') 625 SF single story masonry office condo with private entrance and nice natural light. 12x14 private office and 2nd 9x12 office with reception area. Kitchenette/storage and bath, on a crawl space. See photos and layout. Ideal for insurance (current use), attorney, CPA, head hunter, etc. Quality build out. Furniture is negotiable. See photos and layout. Visit Premier Commercial Realty website to see more listings.



PRICE REDUCED

MLS: 10269123

| PROPERTY SPECIFICATIONS | |
|-------------------------|---|
| Description | Office Condo |
| Building Size: | 625 SF |
| Year Built: | 2000 |
| Available Space | 625 SF |
| HVAC System: | Gas forced air/Central air |
| Electric: | 100 amp |
| Sprinklered: | No |
| Washrooms: | 1 Handicapped |
| Floors: | Carpet/Tile |
| Ceiling Height: | 9' |
| Possession: | Negotiable |
| Parking: | Common |
| Sewer: City | Water: City |
| Zoning: | O (office) |
| Real Estate Taxes: | \$2,236.12 (2018) |
| Association Fee: | \$125/month |
| Sale Price: | \$78,900 REDUCED \$69,900 (\$111.84 psf) |



DIRECTIONS: Highway 31 to Highway 176 (Terra Cotta) west to 820 East Office Park on north side of street. Center section, right (East) side.

PIN: 14-34-178-078

May 10, 2019

No warranty or representation is made as to the accuracy of the foregoing information. Terms of sale or lease and availability are subject to change or withdrawal without notice. This document is for information purposes only. No offer of sub-agency is being made.

[CLICK HERE
TO VISIT OUR WEBSITE](#)

www.PremierCommercialRealty.com

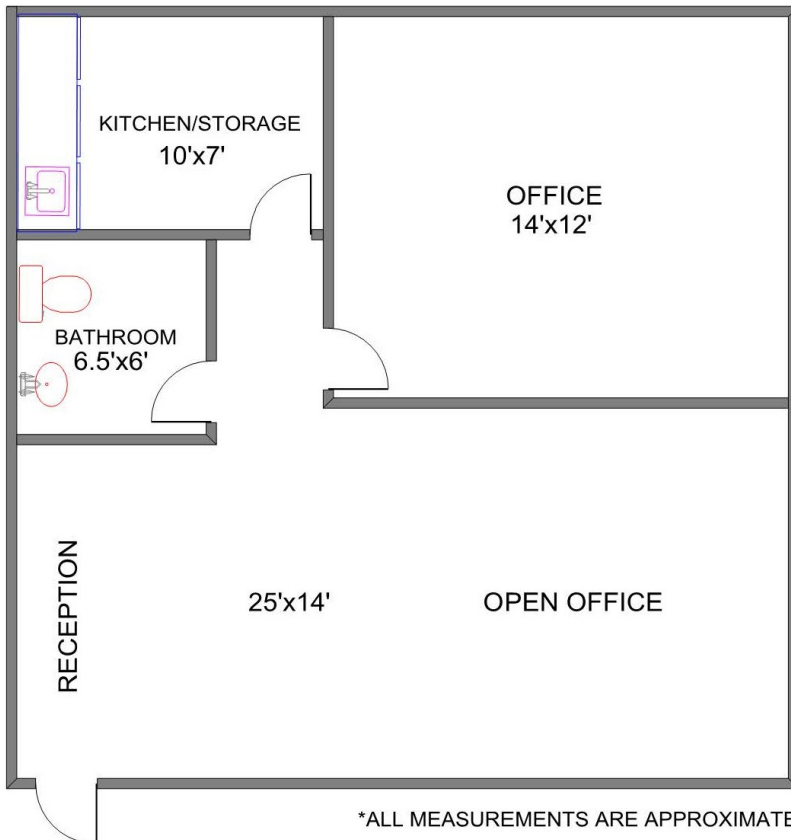
- Industrial
- Commercial
- Office
- Land
- Business

820 E. Terra Cotta
Unit #222
Crystal Lake, IL 60014



820 TERRA COTTA
UNIT 222
625 SF

25'



25'

*ALL MEASUREMENTS ARE APPROXIMATE