

Winter Park Industrial Flex Space

6848 Stapoint Court, Winter Park, FL 32792



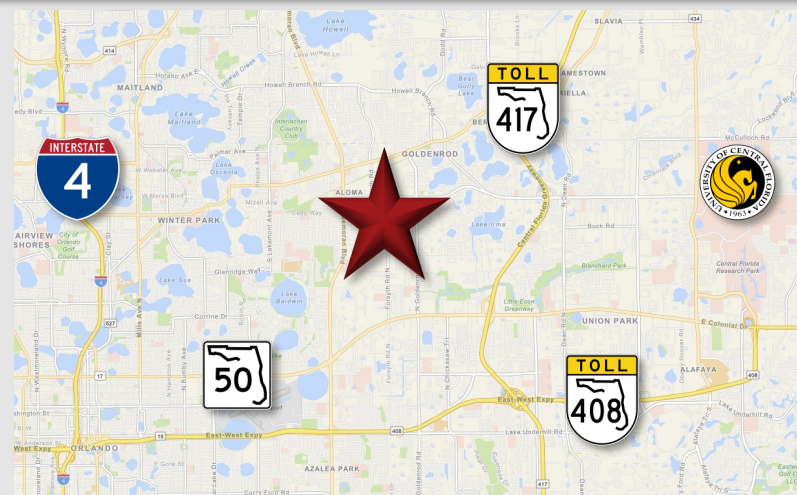
Price: \$1,400,000

LOCATION DETAILS

Located in Winter Park, near the intersection of Forsyth Rd and University Blvd in a well maintained industrial area. Convenient access to SR 436, E Colonial Dr, the 417, and other major highways.

PROPERTY DETAILS

- ± 15,270 SF
- Built-out warehouse/open space with private offices
- Double bay truck well
- 2 Dock high doors
- 1 Grade level door
- 15' Ceiling
- 100% HVAC
- 3 Phase power
- Highly secure



2018 DEMOGRAPHICS

Miles	Population	Average HH Income	Median HH Income
1	11,395	\$51,980	\$35,884
3	105,709	\$76,001	\$48,440
5	277,865	\$77,125	\$51,871

CONTACT FOR MORE INFORMATION

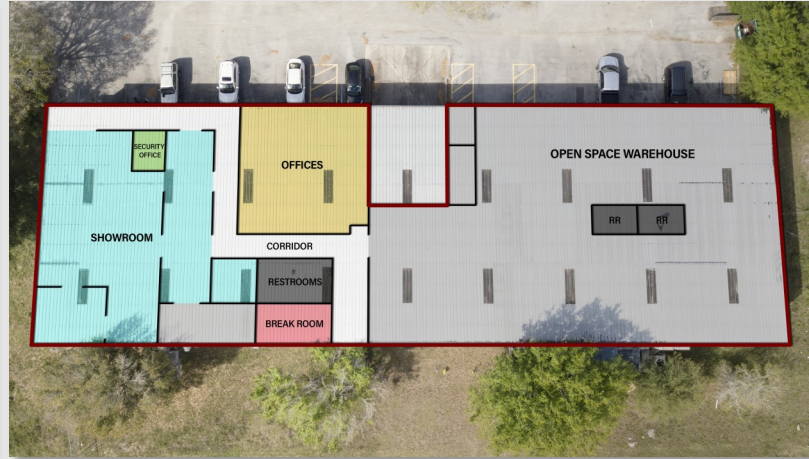
Marie Boyle, CCIM
407.383.8142
marie@palkiper.com

Blake Trent
407.280.4372
blake@palkiper.com

Winter Park Industrial Flex Space

6848 Stapoint Court, Winter Park, FL 32792

 **Palkiper**
Commercial Real Estate Services



CONTACT FOR MORE INFORMATION

Marie Boyle, CCIM

407.383.8142

marie@palkiper.com

Blake Trent

407.280.4372

blake@palkiper.com