

HWY 441 NEAR HWY 436

0.96± acre

Orange County, FL



LOCATION/DESCRIPTION

Commercial lot on the north side of US Hwy 441 (N Orange Blossom Trail) at Century Lane, approx. $\frac{3}{4}$ miles east of US Hwy 441 and Hwy 436 intersection, in the City of Apopka, Orange County. Billboard lease and easement are not included.

SIZE

0.96± acre

ASKING PRICE

REDUCED TO \$195,000 (was \$225,000)

ZONING/FUTURE LAND USE

Zoned C-1 (City of Apopka); FLU: Commercial

ROAD FRONTAGE

99'± on N side of US Hwy 441

PARCEL ID

14-21-28-1305-00-050

Offering subject to errors, omission, prior sale or withdrawal without notice.

LAND FOR SALE

— Commercial Real Estate Investments | Management | Brokerage | Development | Land

Maury L. Carter & Associates, Inc.
407-422-3144 | www.maurycarter.com



HWY 441 NEAR HWY 436

0.96± acre

Orange County, FL



LOCATION MAP

— Commercial Real Estate Investments | Management | Brokerage | Development | Land

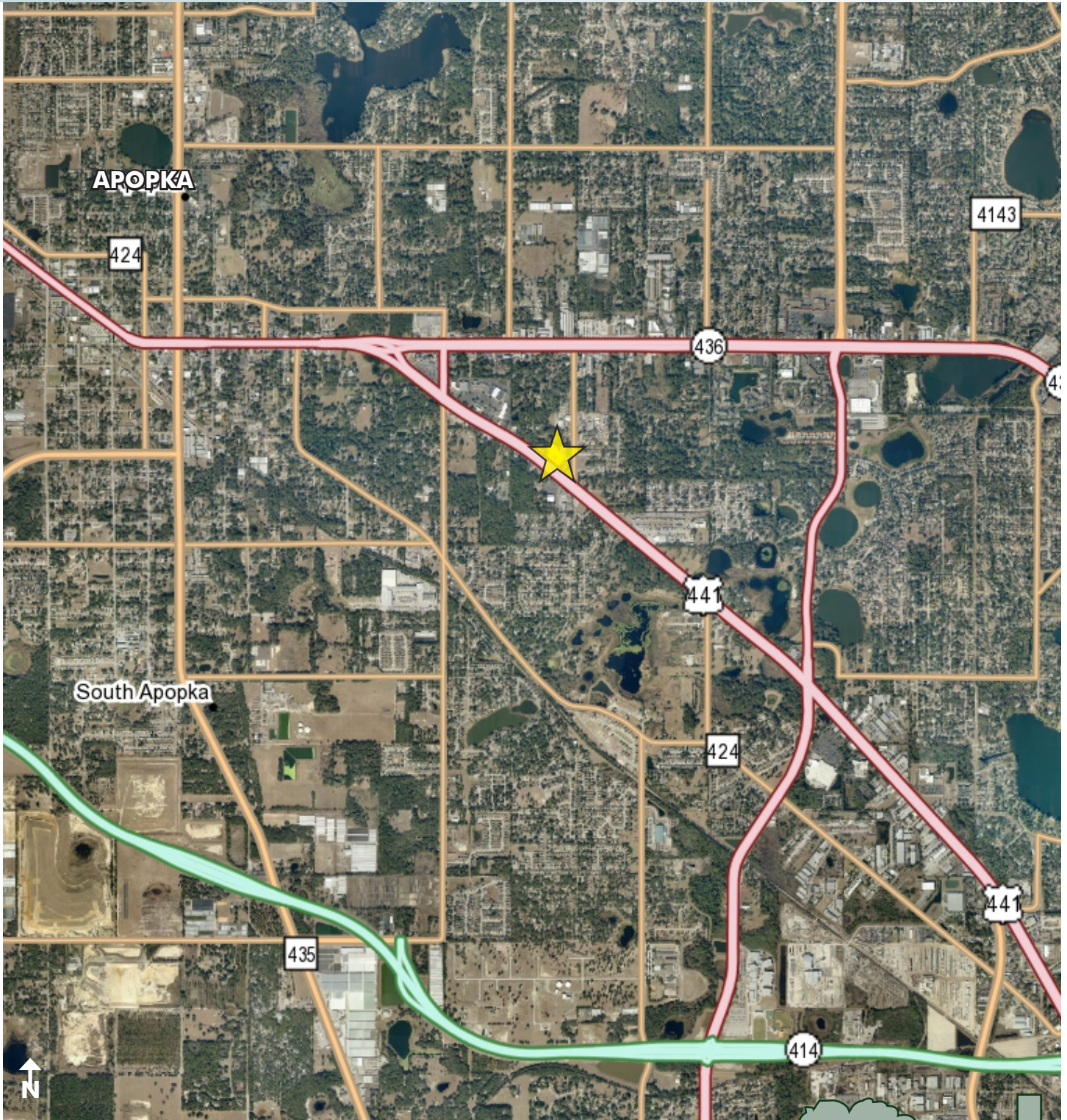
Maury L. Carter & Associates, Inc.
407-422-3144 | www.maurycarter.com



HWY 441 NEAR HWY 436

0.96± acre

Orange County, FL



REGIONAL MAP

— Commercial Real Estate Investments | Management | Brokerage | Development | Land

Maury L. Carter & Associates, Inc.
407-422-3144 | www.maurycarter.com



HWY 441 NEAR HWY 436

0.96± acre

Orange County, FL

SECTION 14
TOWNSHIP 21 SOUTH
RANGE 28 EAST
JOB NO. S-07464

BOUNDARY SURVEY

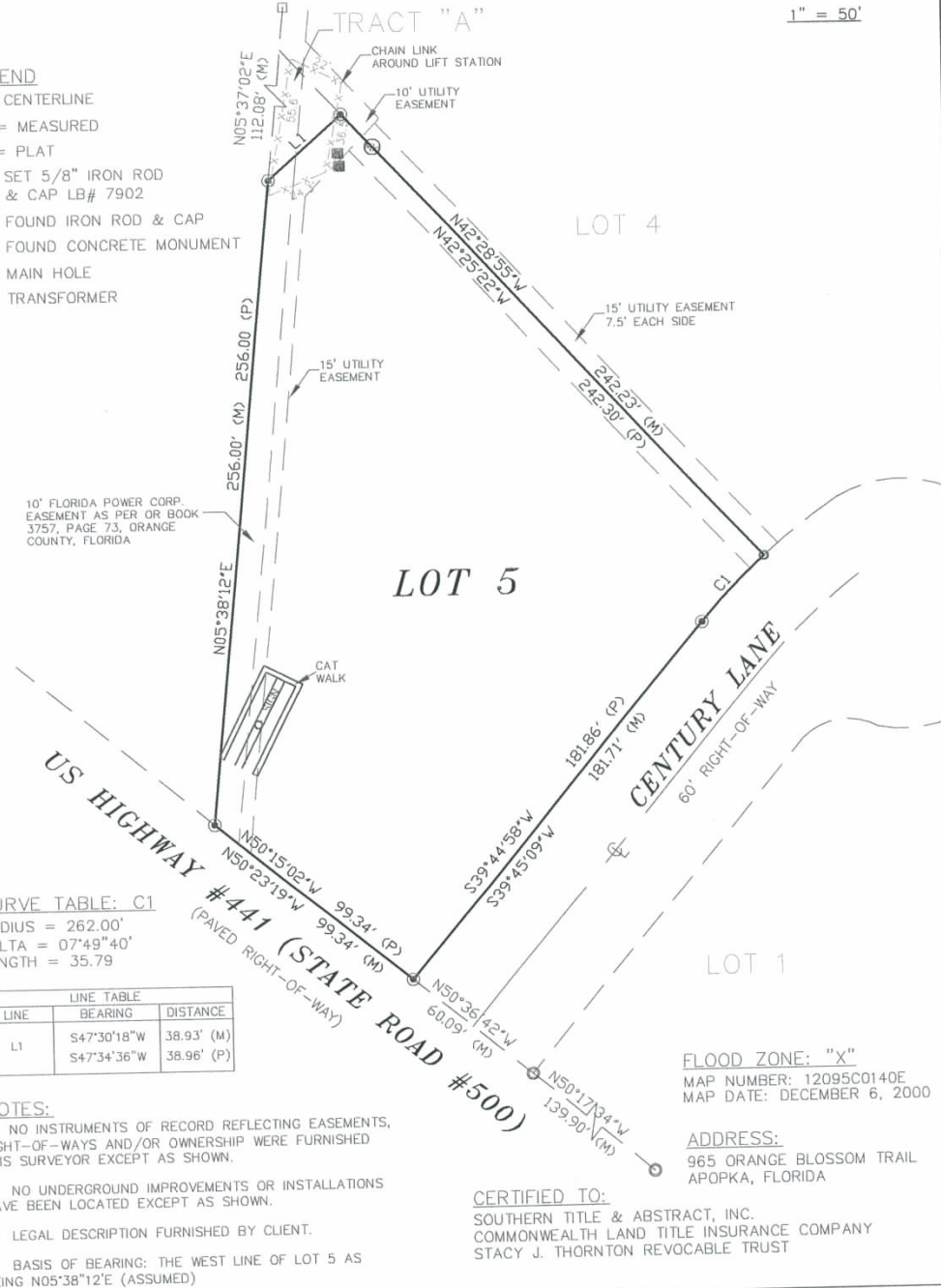
DESCRIPTION

LOT 5, CENTURY PARK, ACCORDING TO THE PLAT THEREOF AS RECORDED IN PLAT BOOK 27, PAGE 30 OF THE PUBLIC RECORDS OF ORANGE COUNTY, FLORIDA.

1" = 50'

LEGEND

- CL = CENTERLINE
- (M) = MEASURED
- (P) = PLAT
- = SET 5/8" IRON ROD & CAP LB# 7902
- = FOUND IRON ROD & CAP
- = FOUND CONCRETE MONUMENT
- ⊕ = MAIN HOLE
- = TRANSFORMER



CURVE TABLE: C1

RADIUS = 262.00'
DELTA = 07°49'40"
LENGTH = 35.79

LINE	BEARING	DISTANCE
L1	S47°30'18"W	38.93' (M)
	S47°34'36"W	38.96' (P)

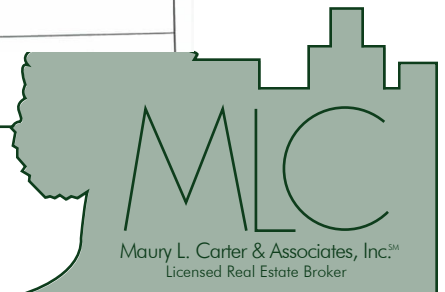
NOTES:

1. NO INSTRUMENTS OF RECORD REFLECTING EASEMENTS, RIGHT-OF-WAYS AND/OR OWNERSHIP WERE FURNISHED THIS SURVEYOR EXCEPT AS SHOWN.
2. NO UNDERGROUND IMPROVEMENTS OR INSTALLATIONS HAVE BEEN LOCATED EXCEPT AS SHOWN.
3. LEGAL DESCRIPTION FURNISHED BY CLIENT.
4. BASIS OF BEARING: THE WEST LINE OF LOT 5 AS BEING N05°38'12"E (ASSUMED)

BOUNDARY SURVEY

— Commercial Real Estate Investments | Management | Brokerage | Development | Land

Maury L. Carter & Associates, Inc.
407-422-3144 | www.maurycarter.com



HWY 441 NEAR HWY 436

0.96± acre

Orange County, FL

Vital Signs

Covering health, hospitals, science and medicine

MARCH 31, 2015, 10:26 AM

Florida Hospital Apopka unveils plans for new location

By **Naseem S. Miller**

After 40 years in downtown Apopka, Florida Hospital is planning to move to a new location with a bigger campus and new services.

Officials gathered this morning at the intersection of Harmon Road and Ocoee-Apopka Road to unveil the new plans.

“We will continue to offer ER, cardiology and imaging services, and look forward to growing our Women’s Center, outpatient rehab program and ICU,” said Jennifer Wandersleben, vice president and administrator of Florida Hospital Apopka, in a statement.

The hospital will have 120 private patient rooms, surgical services and a diagnostic cath lab.

The new facility could generate up to 300 new jobs in clinical and non-clinical areas, hospital officials said.

The hospital is expected to open in Spring 2017.

Copyright © 2015, Orlando Sentinel



MAIN ENTRY EXTERIOR CONCEPT RENDERING



FLORIDA HOSPITAL APOPKA - REPLACEMENT CAMPUS
APOPKA, FLORIDA
EXTERIOR CONCEPT RENDERINGS
02/12/2015



— Commercial Real Estate Investments | Management | Brokerage | Development | Land

Maury L. Carter & Associates, Inc.
407-422-3144 | www.maurycarter.com

