



# CHRISTIANSEN

COMMERCIAL REAL ESTATE

License 134



## PRIME PROPERTY FOR SALE

SOUTH OF KILOMETER 6.5 PR-2 GUAYNABO, PUERTO RICO

### PROPERTY DETAILS

Located along State Road PR-2, a heavily transited artery which runs in an east-to-west direction from San Juan and crossing all northern municipalities of the Island. Residential developments in the immediate vicinity include Villa Caparra, Suchville, Tintillo, Torrimar and Garden Hills.

Near the Academia San Jose School and Caparra Country Club. Also located near San Patricio Plaza and Garden Hills Plaza shopping centers, schools, gas stations, supermarkets and restaurants, among others.

### SITE AREA

1,905.5 square meters

### BUILDING AREA

Approx 3,500 square feet

### ZONING

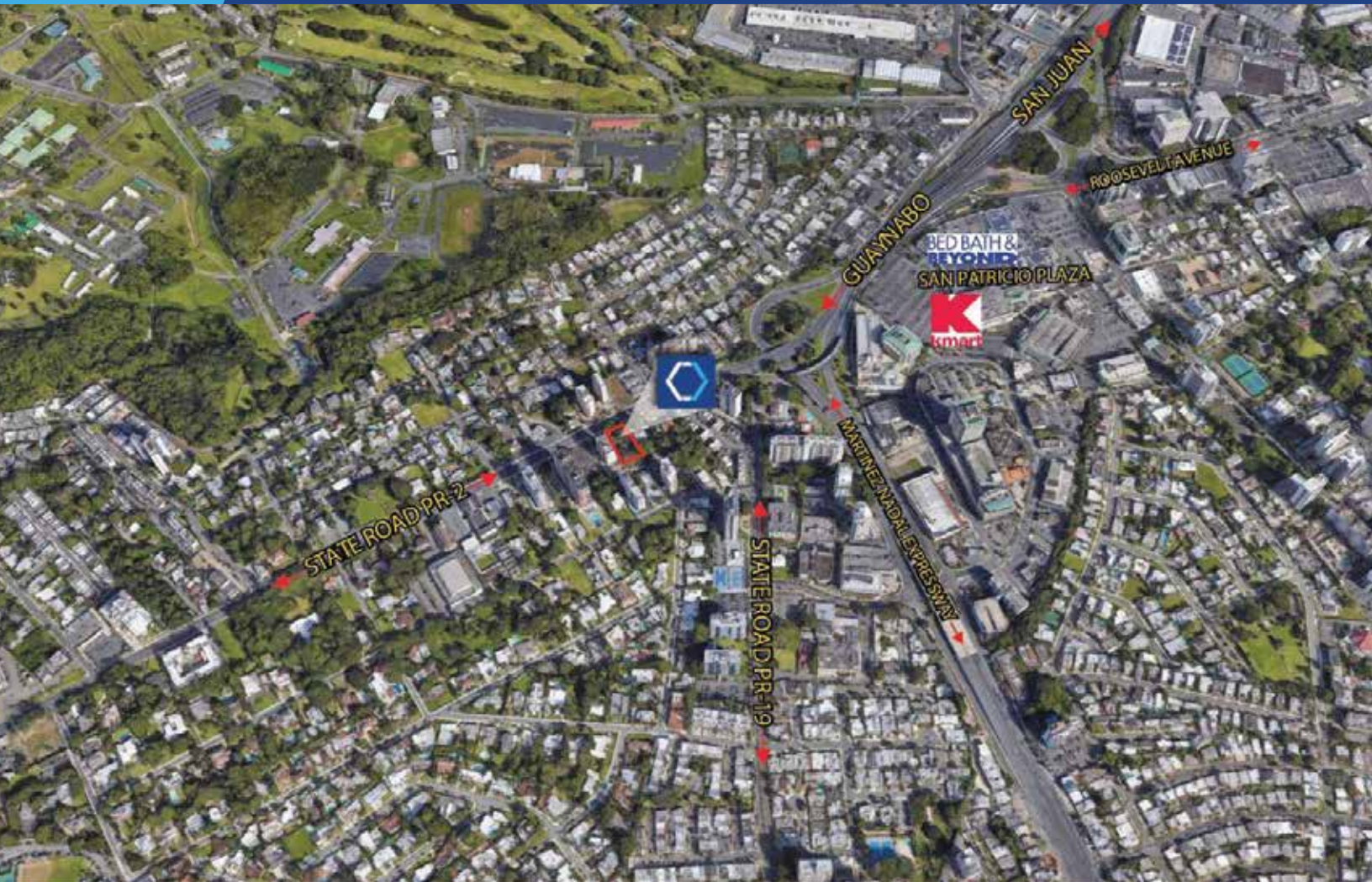
R-5 Residential

### COORDINATES

18.40618495, -66.11072347

FOR MORE INFORMATION VISIT [WWW.CHRISTIANSENCOMMERCIAL.COM](http://WWW.CHRISTIANSENCOMMERCIAL.COM)

# SOUTH OF KILOMETER 6.5 PR-2 GUAYNABO, PUERTO RICO



American International Plaza  
250 Muñoz Rivera Avenue Suite 350  
Hato Rey, Puerto Rico 00918  
[www.christiansencommercial.com](http://www.christiansencommercial.com)  
787-778-7000



CAMERA SCAN FOR MORE DETAILS