

NEW LISTING!



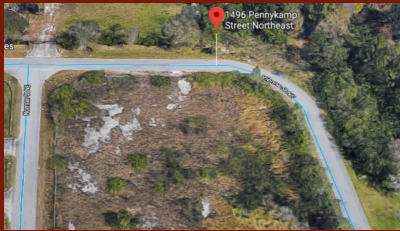
\$150,000

**COMMERCIAL LAND
1.18 ACRES IN PALM BAY**

**1480-1496 Pennykamp St
NE Palm Bay, Florida**

PROPERTY DETAILS

- TWO ADJOINED .59 ACRE LOTS
- ZONED COMMUNITY COMMERCIAL BY THE CITY OF PALM BAY
- NEAR THE INTERSECTION OF INTERSTATE 95 AND MALABAR ROAD
- CITY WATER AVAILABLE
- RAPIDLY DEVELOPING COMMERCIAL AND INDUSTRIAL AREA
- CONVENIENT LOCATIONS NEAR EXISTING AND DEVELOPING HOMES



The information provided is subject to change without notice. National Realty of Brevard assumes no responsibility for any error, omissions or changes



NATIONAL REALTY
OF BREVARD, INC.

The sign of Experience!

Contact: Alan R. King CCIM

321-723-3664 aking@nationalrealtyfla.com