

FOR SALE

TBD NW Reserve Park Terrace

Port St Lucie, FL 34986

Go Team Industrial Park



PROPERTY OVERVIEW

Individual parcel.

Information regarding the size of parcel has not been obtained from a survey. Information as to property size has been provided by the St. Lucie County Property Appraiser's website: www.paslc.org

LOCATION OVERVIEW

GO Team Industrial Park between Glades Cut-off Rd and I-95.

OFFERING SUMMARY

Land Size:	1.34 Acres
Zoning:	Industrial, City of Port St Lucie

SALE PRICE

\$135,000

John Auld

Broker Associate, CCIM
772.220.4096 x104
auld@slccommercial.com

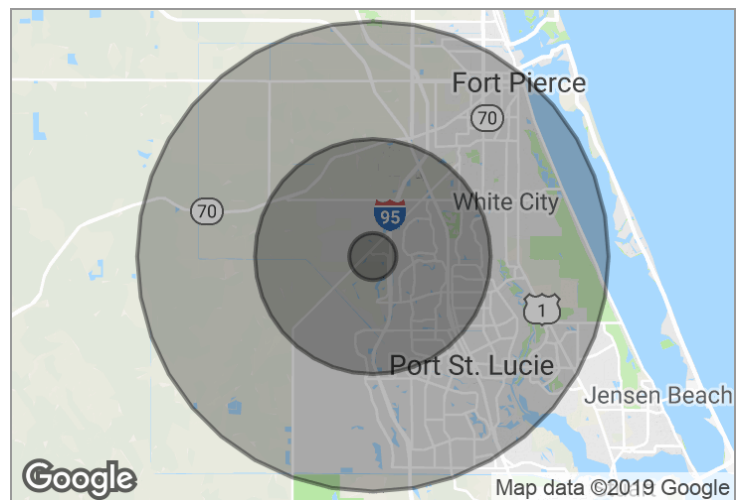
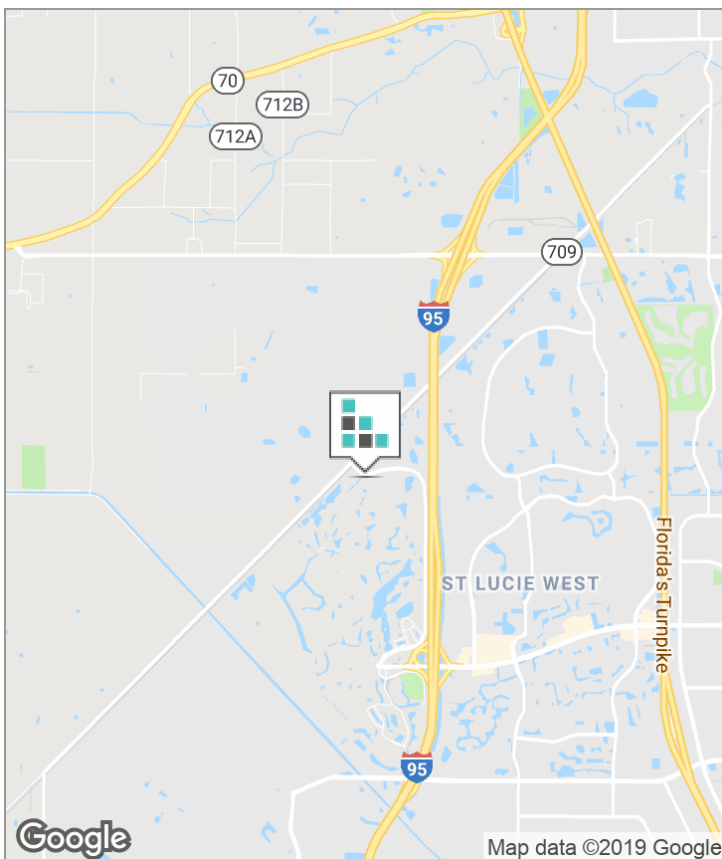
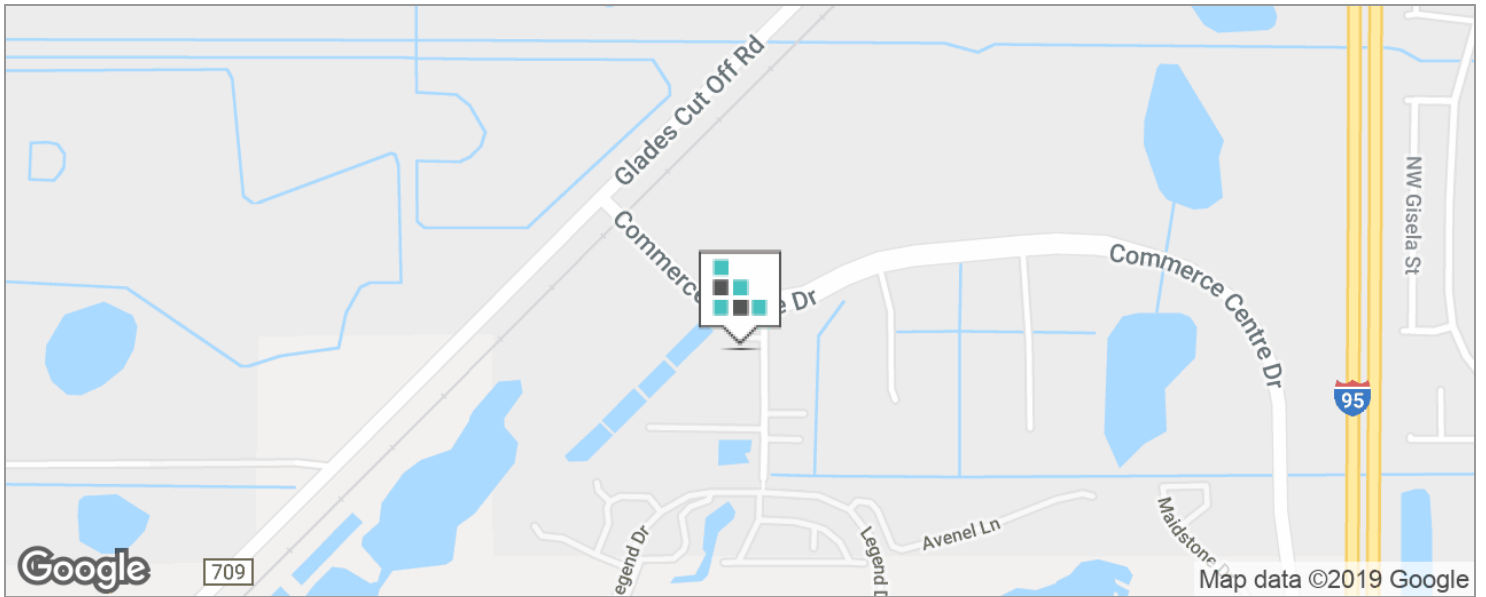
SLC Commercial

2488 SE Willoughby Blvd
Stuart, FL 34994
772.220.4096 | slccommercial.com



The information contained herein has been obtained from sources believed to be reliable, but no warranty or representation, expressed or implied, is made. All sizes and dimensions are approximate. Any prospective buyer should exercise prudence and verify independently all significant data and property information. This is NOT an offer of sub-agency or co-brokerage.

Go Team Industrial Park



DEMOGRAPHICS

	1 MILE	5 MILES	10 MILES
Total Population	679	62,155	215,503
Total Households	274	23,301	79,761
Average HH Income	\$135,818	\$66,999	\$60,928
Average Age	52.1	42.4	40.9

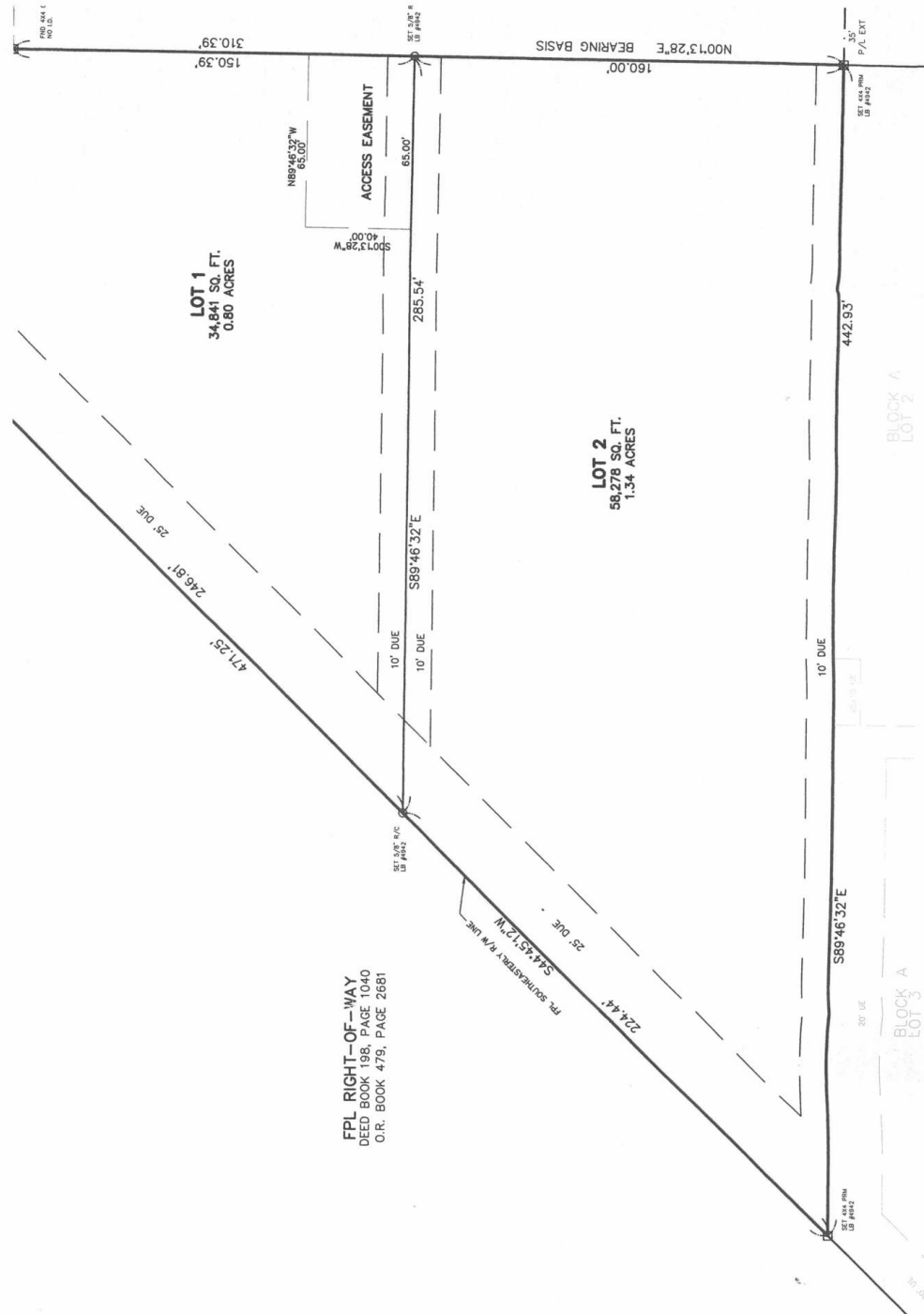
John Auld
 Broker Associate, CCIM
 772.220.4096 x104
 auld@slccommercial.com

SLC Commercial
 2488 SE Willoughby Blvd
 Stuart, FL 34994
 772.220.4096 | slccommercial.com



The information contained herein has been obtained from sources believed to be reliable, but no warranty or representation, expressed or implied, is made. All sizes and dimensions are approximate. Any prospective buyer should exercise prudence and verify independently all significant data and property information. This is NOT an offer of sub-agency or co-brokerage.

Go Team Industrial Park



John Auld
 Broker Associate, CCIM
 772.220.4096 x104
 auld@slccommercial.com

SLC Commercial
 2488 SE Willoughby Blvd
 Stuart, FL 34994
 772.220.4096 | slccommercial.com



The information contained herein has been obtained from sources believed to be reliable, but no warranty or representation, expressed or implied, is made. All sizes and dimensions are approximate. Any prospective buyer should exercise prudence and verify independently all significant data and property information. This is NOT an offer of sub-agency or co-brokerage.

Go Team Industrial Park



Google

Map data ©2019 Google Imagery ©2019 , DigitalGlobe, Landsat / Copernicus, U.S. Geological Survey

John Auld
 Broker Associate, CCIM
 772.220.4096 x104
 auld@slccommercial.com

SLC Commercial
 2488 SE Willoughby Blvd
 Stuart, FL 34994
 772.220.4096 | slccommercial.com



The information contained herein has been obtained from sources believed to be reliable, but no warranty or representation, expressed or implied, is made. All sizes and dimensions are approximate. Any prospective buyer should exercise prudence and verify independently all significant data and property information. This is NOT an offer of sub-agency or co-brokerage.

■ Go Team Industrial Park

This presentation package has been prepared by the company representing the property for informational purposes only and does not purport to contain all information necessary to reach a purchase decision.

The information herein has been given by the Owner or other sources believed to be reliable, but it has not necessarily been independently verified by the Company representing the property and neither its accuracy nor its completeness is guaranteed.

This information is subject to errors, omissions, changes, prior sale or withdrawal without notice by the Company representing the property and does not constitute a recommendation, endorsement or advice as to the value for the purchase of any property. Each prospective lessee or purchaser is to rely upon his/her own investigation, evaluation and judgment as to the advisability of leasing or purchasing the property.

Furthermore, any financial information and calculations presented in this analysis are believed to be accurate, but are not guaranteed and are intended for the purposes of projection and analysis only. The user of this financial information contained herein should consult a tax specialist concerning his/her particular circumstances before making any investment.

■ John Auld

Broker Associate, CCIM
772.220.4096 x104
auld@slccommercial.com

SLC Commercial

2488 SE Willoughby Blvd
Stuart, FL 34994
772.220.4096 | slccommercial.com

