

Wiest Realty, Inc.



Land Investment Opportunity

15+- Acres

9400 Mojave Dr., Adelanto, CA 92301
(Unincorporated San Bernardino County)

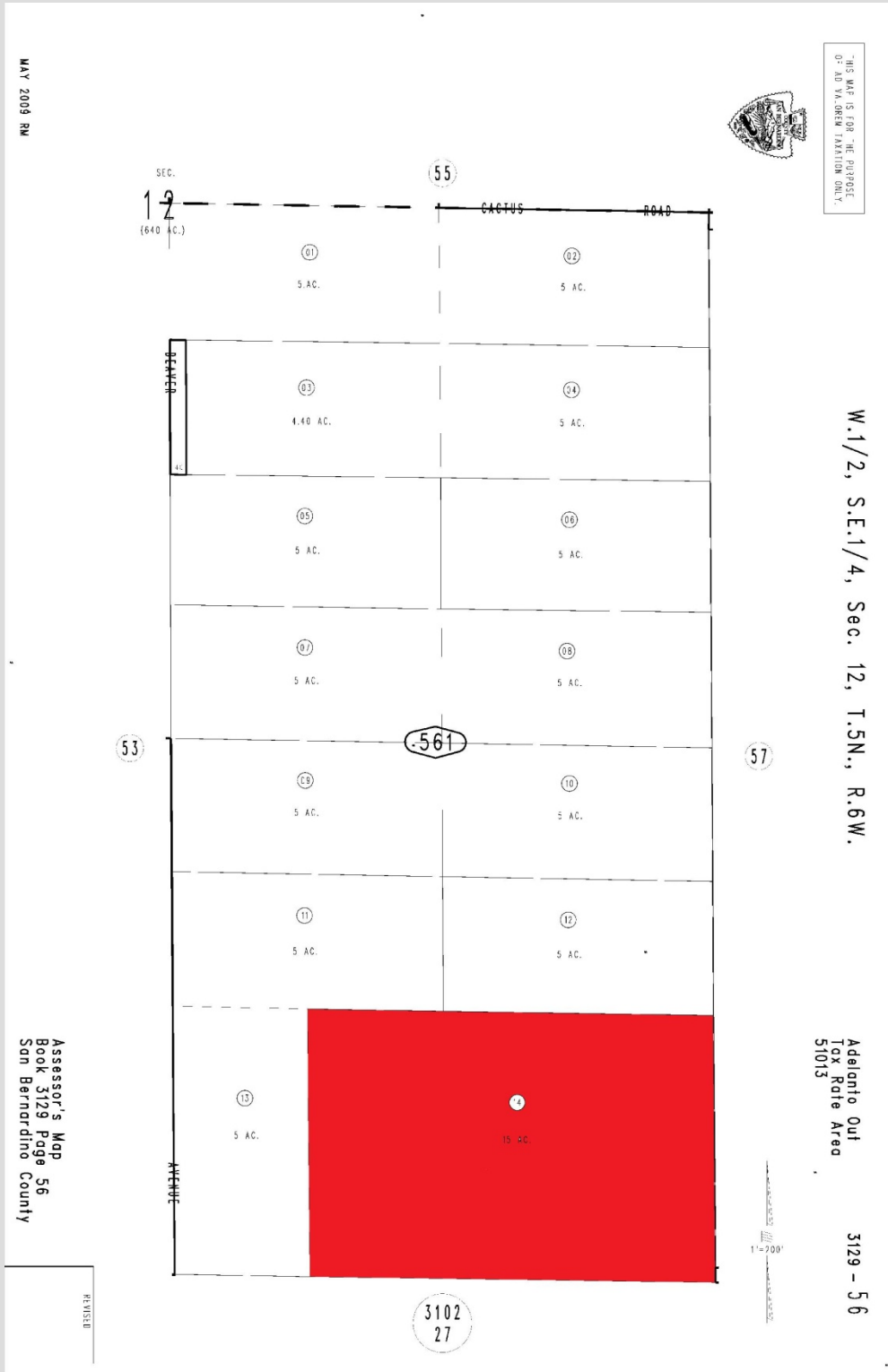


- Mostly level+- parcel at road grade
- Rectangular shape for greater utility
- Approx. 1,000 feet of frontage
- 8/10 mi. +- west of Adelanto High School
- Great for land banking (or 5th wheel)
- RL 2.5 Acre Zone
- Wide hard-packed dirt road access
- On-site well, septic, bungalow
- APN: 3129-561-14-0-000
- Near Adelanto Residential Airport

Offered at \$159,900

Call Bill Swift (310) 666-5638 ▪ (CA BRE 01770743)

Wiest Realty, Inc. (CA BRE #: 01183800) ▪ 15000 7th Street, Suite 205, Victorville, CA 92395
Phone: (760) 881-3707 ▪ Fax: (760) 881-3710



Wiest Realty, Inc.

