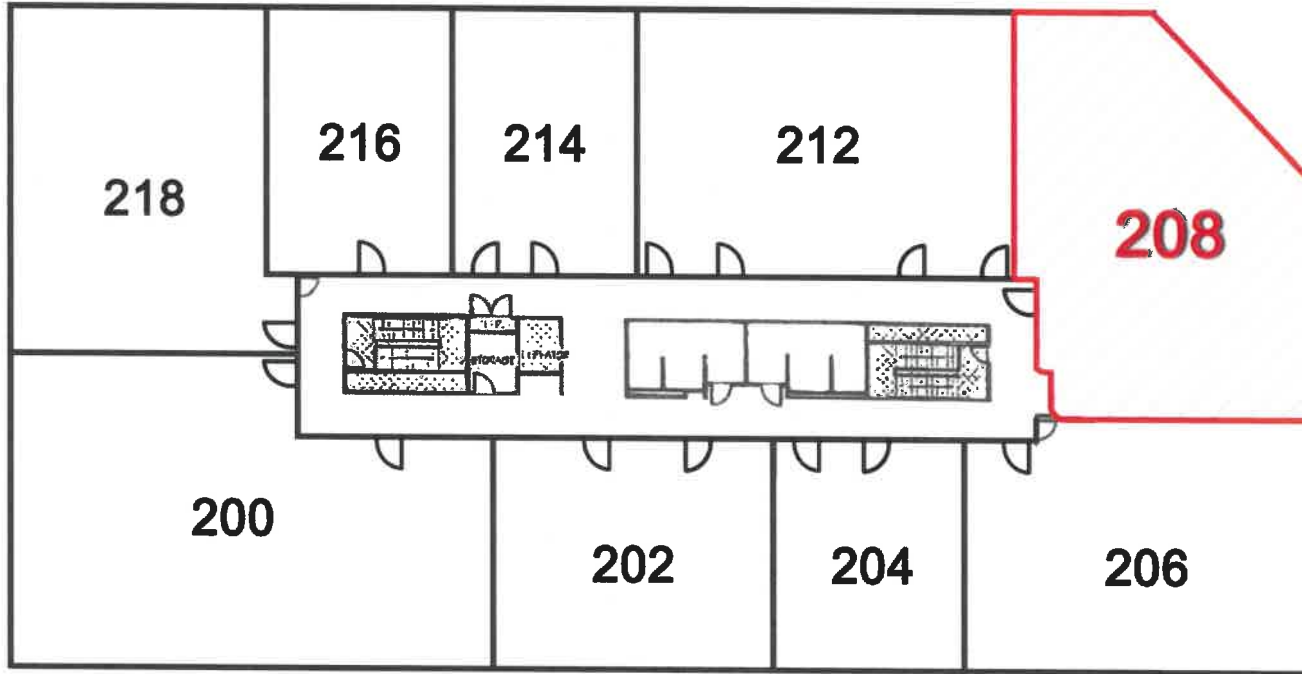


SAND LAKE PHYSICIAN'S BUILDING, A Condominium



SECOND FLOOR



SAND LAKE PHYSICIANS OFFICE BUILDING
9430 TURKEY LAKE ROAD
ORLANDO, FLORIDA 32819

SECOND FLOOR AREA

GROSS AREA	19,000 S.F.
VERTICAL PENETRATIONS	474 S.F.
FLOOR RENTABLE AREA	18,226 S.F.
COMMON AREA:	2,222 S.F.
FLOOR USABLE AREA:	16,024 S.F.
*FLOOR R/U	1.13

CPS, INC.
P.O. BOX 1004
DELABARRE, FLORIDA 32917
904-653-5200 FAX 904-658-4966

SAND LAKE PHYSICIANS OFFICE BUILDING
9430 TURKEY LAKE ROAD
ORLANDO, FLORIDA 32819

(311.64)		DATE
NEA		2.2