

FOR SALE

Commerce Centre Drive & Commerce Lakes Drive

Port St. Lucie, FL 34986

Go Team Industrial Park



PROPERTY OVERVIEW

Individual parcels ranging in size from 1.34 acres to 2.6 acres.

Information regarding the size of individual parcels has not been obtained from a survey. Information as to property size has been provided by the St. Lucie County Property Appraiser's website: www.paslc.org

LOCATION OVERVIEW

GO Team Industrial Park between Blades Cut-off Rd and I-95.

OFFERING SUMMARY

Land Size: 8.17 Acres
Zoning: Vacant Industrial, Service Commercial, City of Port St Lucie

[Click Here for Service Commercial Permitted Uses](#)

[Click Here for Industrial Permitted Uses](#)

SALE PRICE

\$2.00-\$2.50 / PSF

John Auld

Broker Associate, CCIM
772.418.3576
auld@slccommercial.com

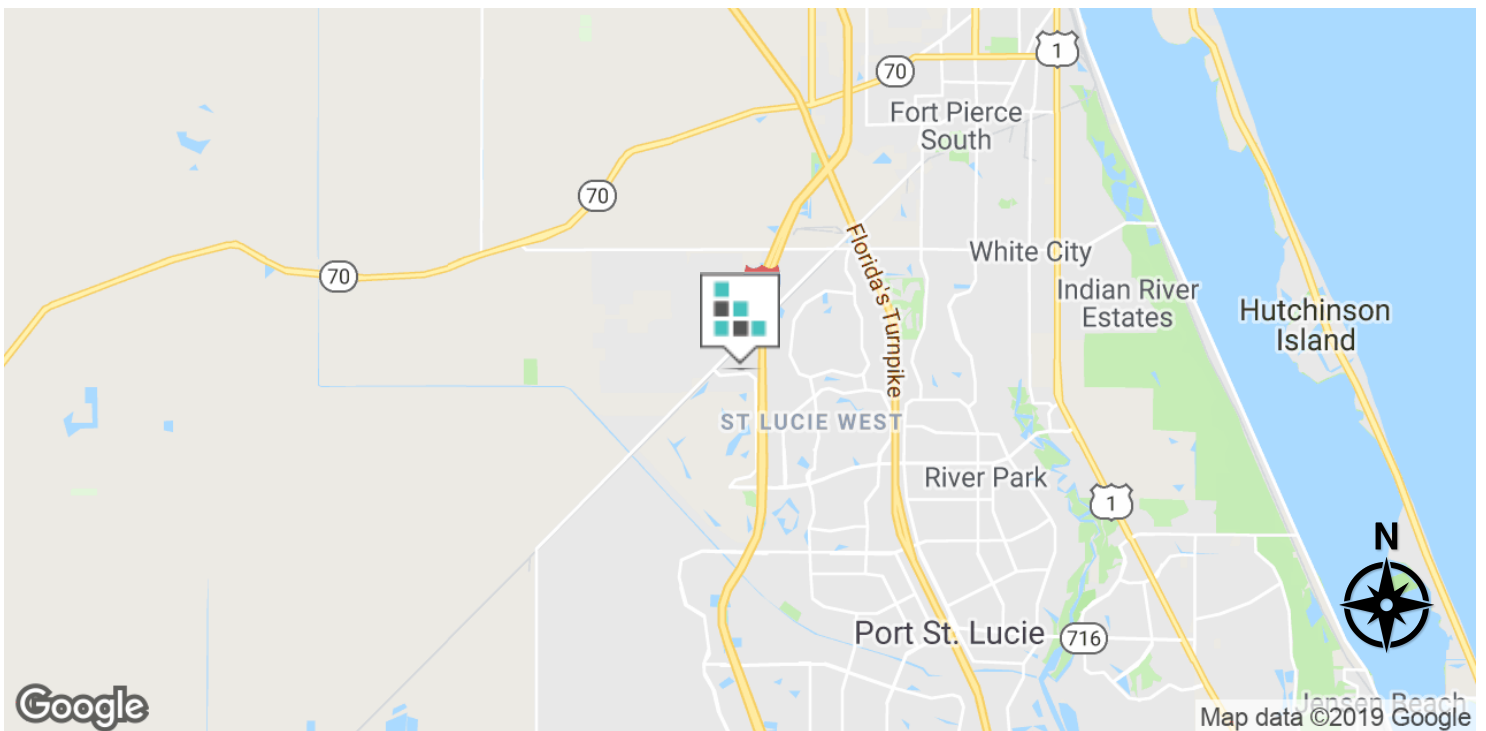
SLC Commercial

2488 SE Willoughby Blvd
Stuart, FL 34994
772.220.4096 | slccommercial.com



The information contained herein has been obtained from sources believed to be reliable, but no warranty or representation, expressed or implied, is made. All sizes and dimensions are approximate. Any prospective buyer should exercise prudence and verify independently all significant data and property information. This is NOT an offer of sub-agency or co-brokerage.

Go Team Industrial Park



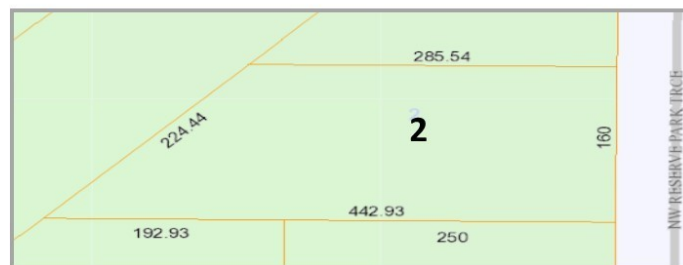
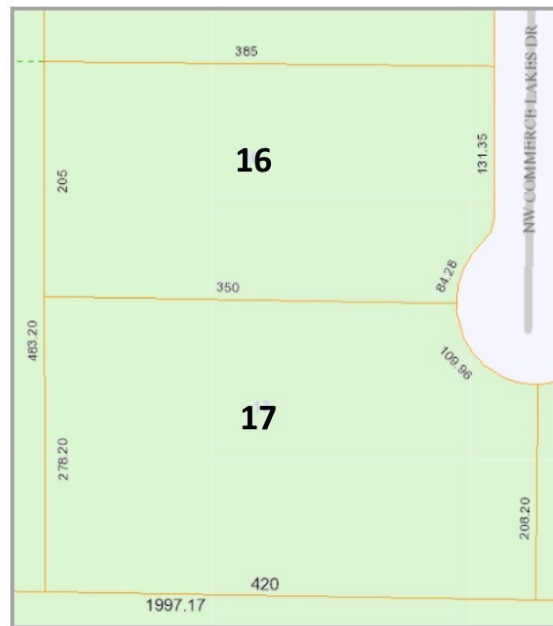
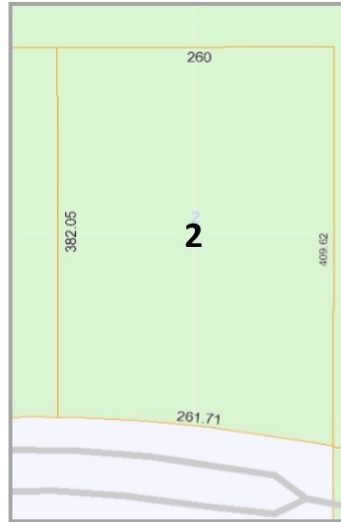
John Auld
Broker Associate, CCIM
772.418.3576
auld@slccommercial.com

SLC Commercial
2488 SE Willoughby Blvd
Stuart, FL 34994
772.220.4096 | slccommercial.com



The information contained herein has been obtained from sources believed to be reliable, but no warranty or representation, expressed or implied, is made. All sizes and dimensions are approximate. Any prospective buyer should exercise prudence and verify independently all significant data and property information. This is NOT an offer of sub-agency or co-brokerage.

Go Team Industrial Park



John Auld
 Broker Associate, CCIM
 772.418.3576
 auld@slccommercial.com

SLC Commercial
 2488 SE Willoughby Blvd
 Stuart, FL 34994
 772.220.4096 | slccommercial.com



The information contained herein has been obtained from sources believed to be reliable, but no warranty or representation, expressed or implied, is made. All sizes and dimensions are approximate. Any prospective buyer should exercise prudence and verify independently all significant data and property information. This is NOT an offer of sub-agency or co-brokerage.

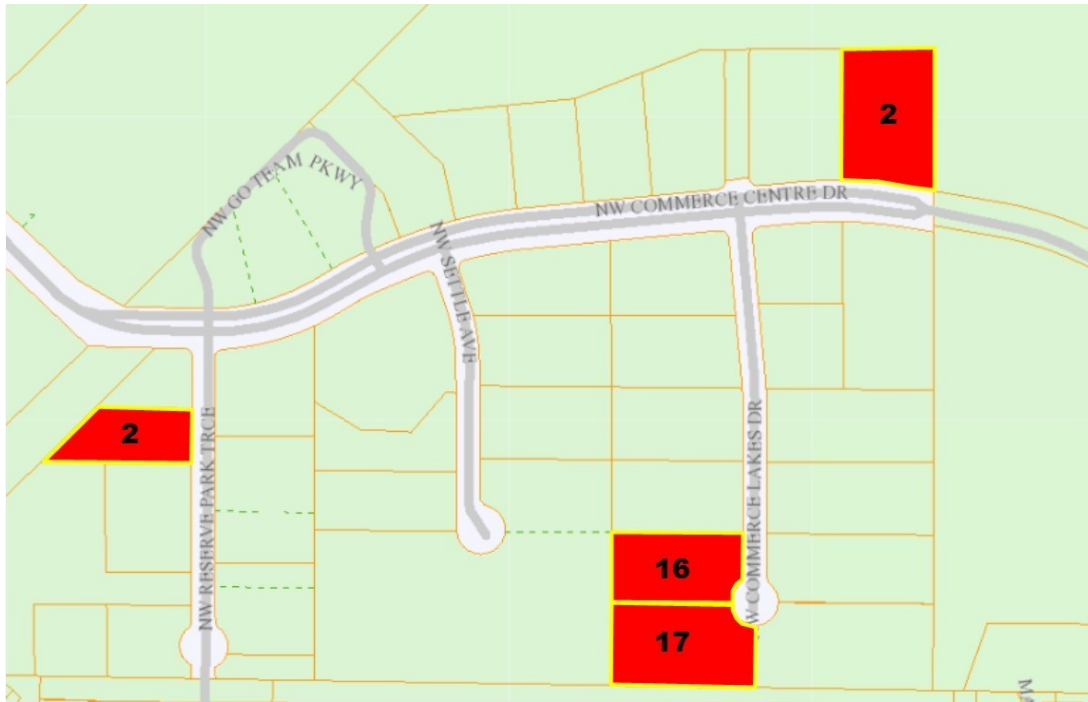
Go Team Industrial Park

OF LOTS | 4

TOTAL LOT SIZE | 1.34 - 2.6 Acres

TOTAL LOT PRICE | \$2.0 - 2.57 / SF

BEST USE | -



STATUS	LOT #	ADDRESS	APN	SUB-TYPE	SIZE	PRICE	ZONING
Available	2	Commerce Centre Dr	3315-703-0019-000-0	Industrial	2.39 Acres	\$2.50 / SF	Service Commercial, City of Port St Lucie
Available	16	Commerce Lakes Dr	3315-703-0005-000-9	Industrial	1.78 Acres	\$2.00 / SF	Industrial, City of Port St Lucie
Available	17	Commerce Lakes Dr	3315-703-0006-000-6	Industrial	2.66 Acres	\$2.00 / SF	Industrial, City of Port St Lucie
Available	2	Reserve Pk Trce	3315-705-0002-000-4	Industrial	1.34 Acres	\$2.57 / SF	Industrial, City of Port St Lucie

John Auld

Broker Associate, CCIM
772.418.3576
auld@slccommercial.com

SLC Commercial

2488 SE Willoughby Blvd
Stuart, FL 34994
772.220.4096 | slccommercial.com



Go Team Industrial Park



Google

Map data ©2019 Google Imagery ©2019 , DigitalGlobe, Landsat / Copernicus, U.S. Geological Survey

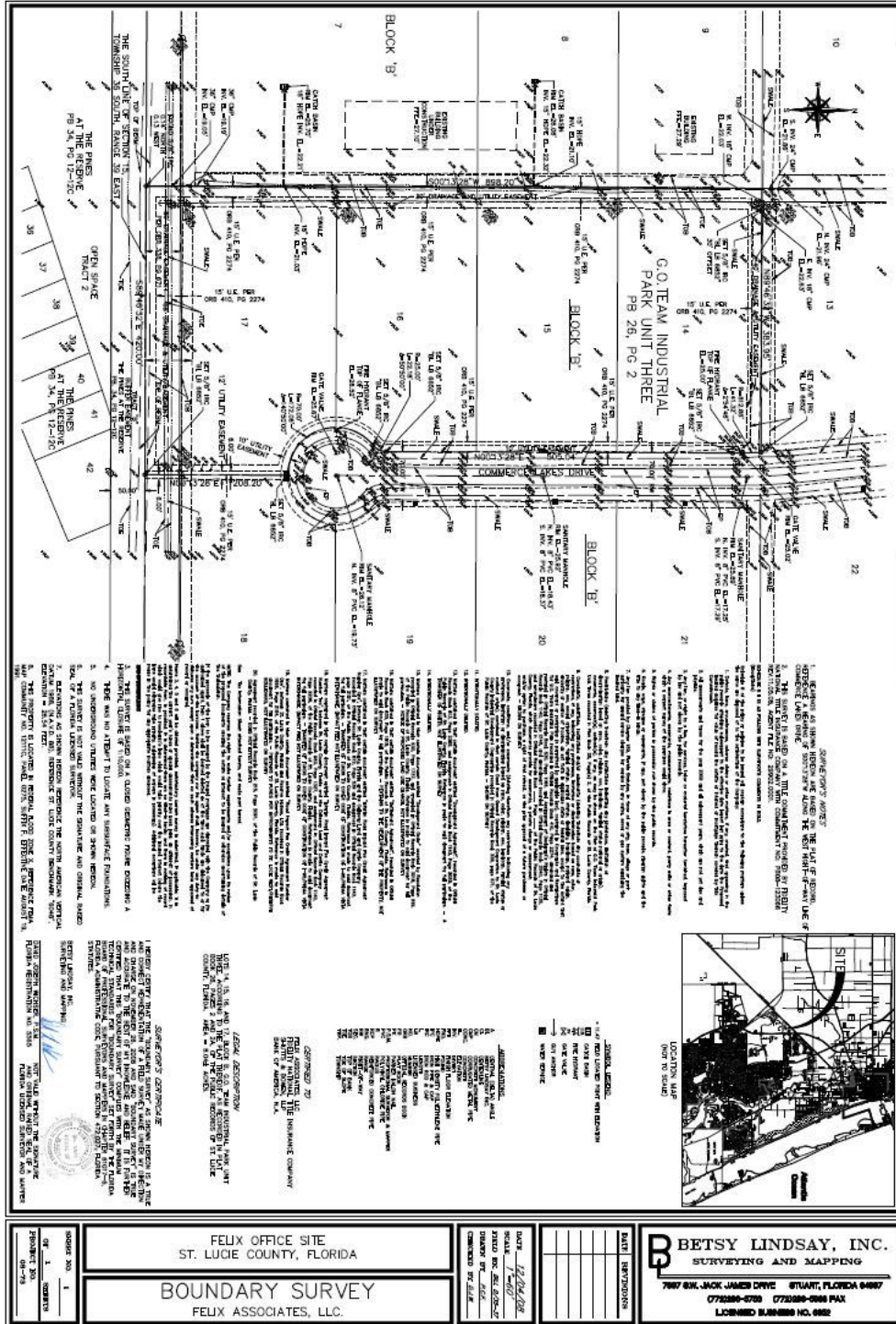
John Auld
 Broker Associate, CCIM
 772.418.3576
 auld@slccommercial.com

SLC Commercial
 2488 SE Willoughby Blvd
 Stuart, FL 34994
 772.220.4096 | slccommercial.com



The information contained herein has been obtained from sources believed to be reliable, but no warranty or representation, expressed or implied, is made. All sizes and dimensions are approximate. Any prospective buyer should exercise prudence and verify independently all significant data and property information. This is NOT an offer of sub-agency or co-brokerage.

Go Team Industrial Park



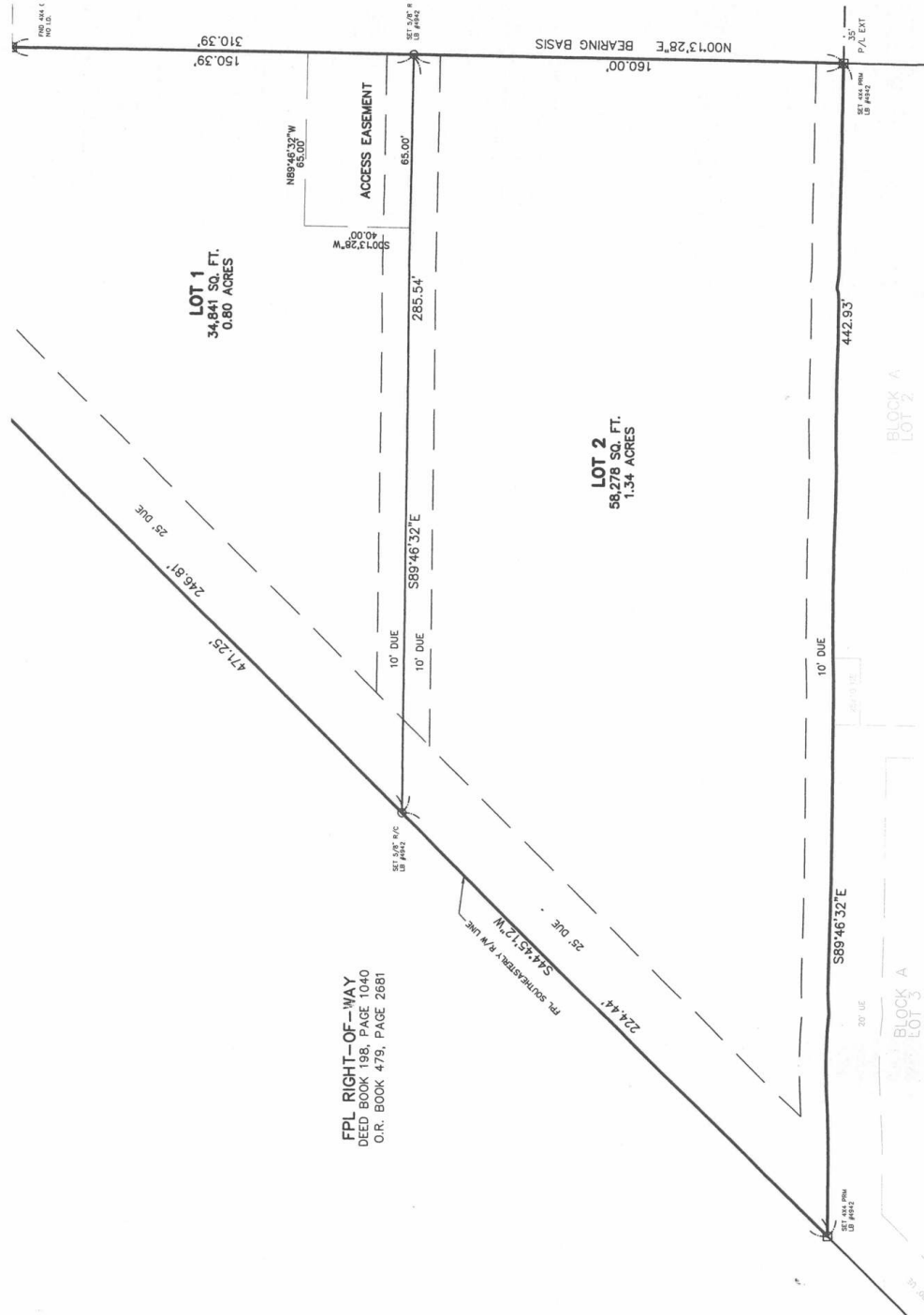
John Auld
Broker Associate, CCIM
772.418.3576
auld@slccommercial.com

SLC Commercial
2488 SE Willoughby Blvd
Stuart, FL 34994
772.220.4096 | slccommercial.com



The information contained herein has been obtained from sources believed to be reliable, but no warranty or representation, expressed or implied, is made. All sizes and dimensions are approximate. Any prospective buyer should exercise prudence and verify independently all significant data and property information. This is NOT an offer of sub-agency or co-brokerage.

Go Team Industrial Park



John Auld
 Broker Associate, CCIM
 772.418.3576
 auld@slccommercial.com

SLC Commercial
 2488 SE Willoughby Blvd
 Stuart, FL 34994
 772.220.4096 | slccommercial.com



The information contained herein has been obtained from sources believed to be reliable, but no warranty or representation, expressed or implied, is made. All sizes and dimensions are approximate. Any prospective buyer should exercise prudence and verify independently all significant data and property information. This is NOT an offer of sub-agency or co-brokerage.

■ Go Team Industrial Park

This presentation package has been prepared by the company representing the property for informational purposes only and does not purport to contain all information necessary to reach a purchase decision.

The information herein has been given by the Owner or other sources believed to be reliable, but it has not necessarily been independently verified by the Company representing the property and neither its accuracy nor its completeness is guaranteed.

This information is subject to errors, omissions, changes, prior sale or withdrawal without notice by the Company representing the property and does not constitute a recommendation, endorsement or advice as to the value for the purchase of any property. Each prospective lessee or purchaser is to rely upon his/her own investigation, evaluation and judgment as to the advisability of leasing or purchasing the property.

Furthermore, any financial information and calculations presented in this analysis are believed to be accurate, but are not guaranteed and are intended for the purposes of projection and analysis only. The user of this financial information contained herein should consult a tax specialist concerning his/her particular circumstances before making any investment.

■ John Auld

Broker Associate, CCIM
772.418.3576
auld@slccommercial.com

SLC Commercial

2488 SE Willoughby Blvd
Stuart, FL 34994
772.220.4096 | slccommercial.com

