

Hand Avenue Office Condo For Sale

1400 Hand Avenue, Unit N

Ormond Beach, FL 32174



OFFERING SUMMARY

SALE PRICE: \$339,900

CONDO FEES: \$1,040 per Quarter

AVAILABLE SF: 2,378 SF

YEAR BUILT: 2004

PARCEL NO: 4229-11-00-000N

ZONING: B-10 'Suburban
Boulevard'

PROPERTY OVERVIEW

2,378 SF Office Condo For Sale. Ready for Immediate Occupancy!
Great Hand Avenue location between Clyde Morris Boulevard and Nova Road.

Building Signage available.

Formerly operated as Hot House Yoga.

Approximately 11' x 38' retail/entry area, two bathrooms, two showers,
washer & dryer hookup, 4 private treatment rooms, and large open yoga
area approximately 43' x 21'.

Easily converted to offices.

Less than 3 miles to AdventHealth Daytona Beach.

Less than 3 miles to Interstate 95.

Approximately 4.3 miles to Twin Lakes Medical Center.

Condo Fees \$1,041.00 per quarter.

LOCATION OVERVIEW

Located on the south side of Hand Avenue between Nova Road and
Clyde Morris Boulevard.

John W. Trost, CCIM

Principal | Senior Advisor

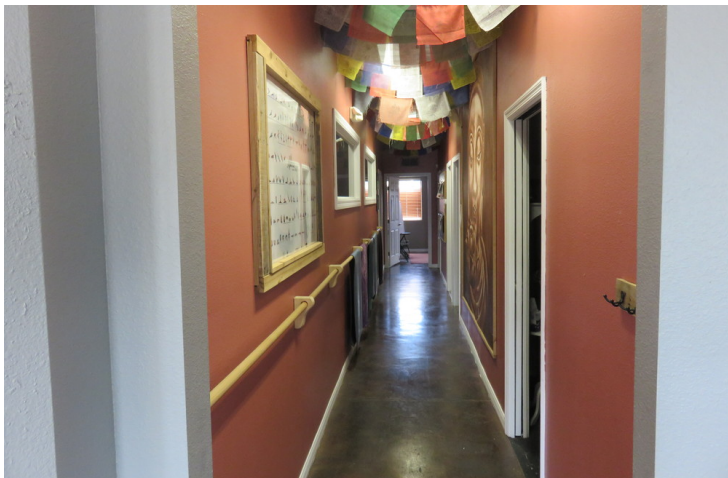
386.301.4581

john.trost@svn.com



The information presented here is deemed to be accurate, but it has not been independently verified. We make no guarantee, warranty or representation. It is your responsibility to independently confirm accuracy and completeness. All SVN® offices are independently owned and operated.

Additional Photos



John W. Trost, CCIM
Principal | Senior Advisor
386.301.4581
john.trost@svn.com



The information presented here is deemed to be accurate, but it has not been independently verified. We make no guarantee, warranty or representation. It is your responsibility to independently confirm accuracy and completeness. All SVN® offices are independently owned and operated.

Additional Photos

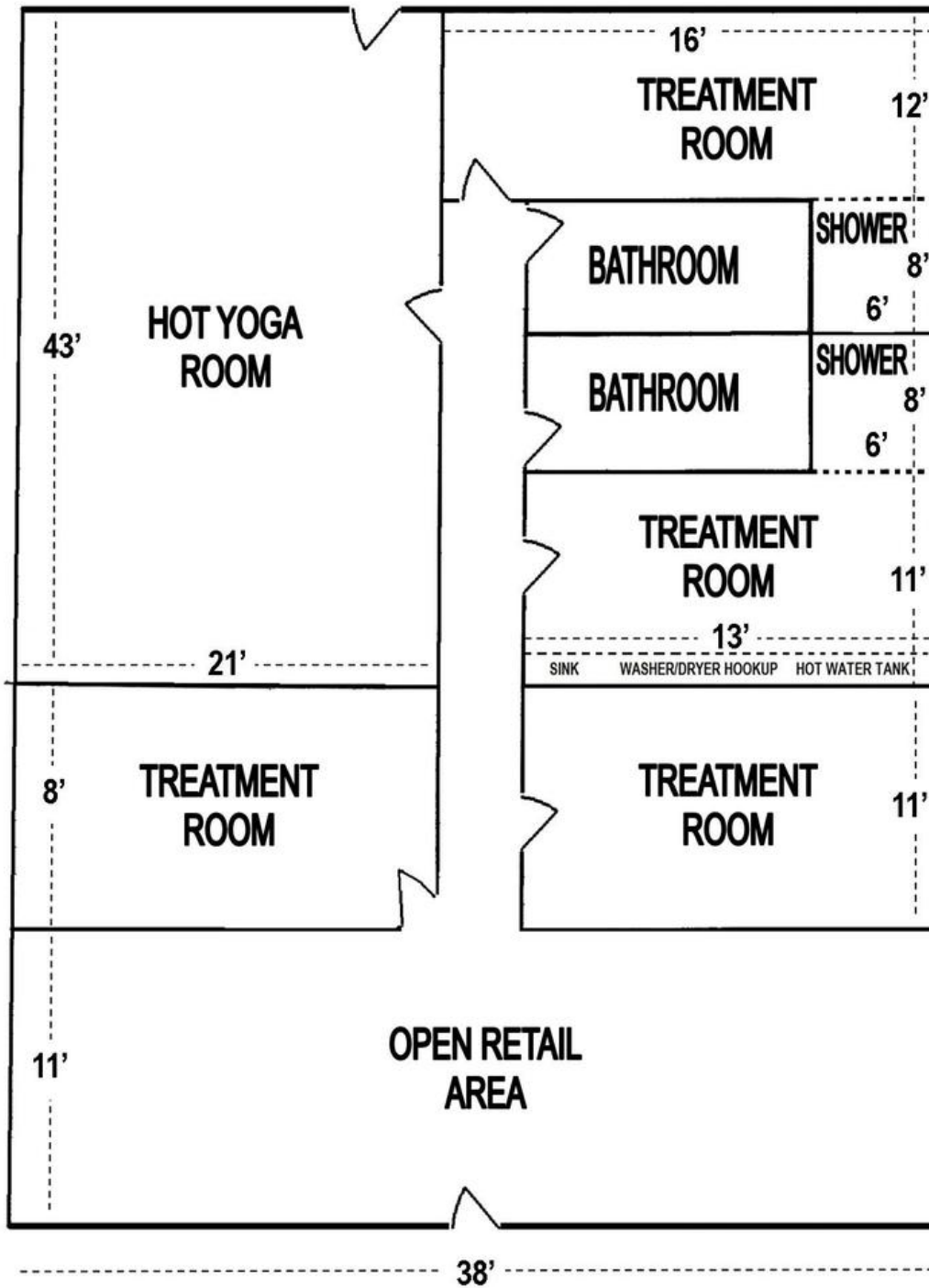


John W. Trost, CCIM
Principal | Senior Advisor
386.301.4581
john.trost@svn.com



The information presented here is deemed to be accurate, but it has not been independently verified. We make no guarantee, warranty or representation. It is your responsibility to independently confirm accuracy and completeness. All SVN® offices are independently owned and operated.

Floor Plan



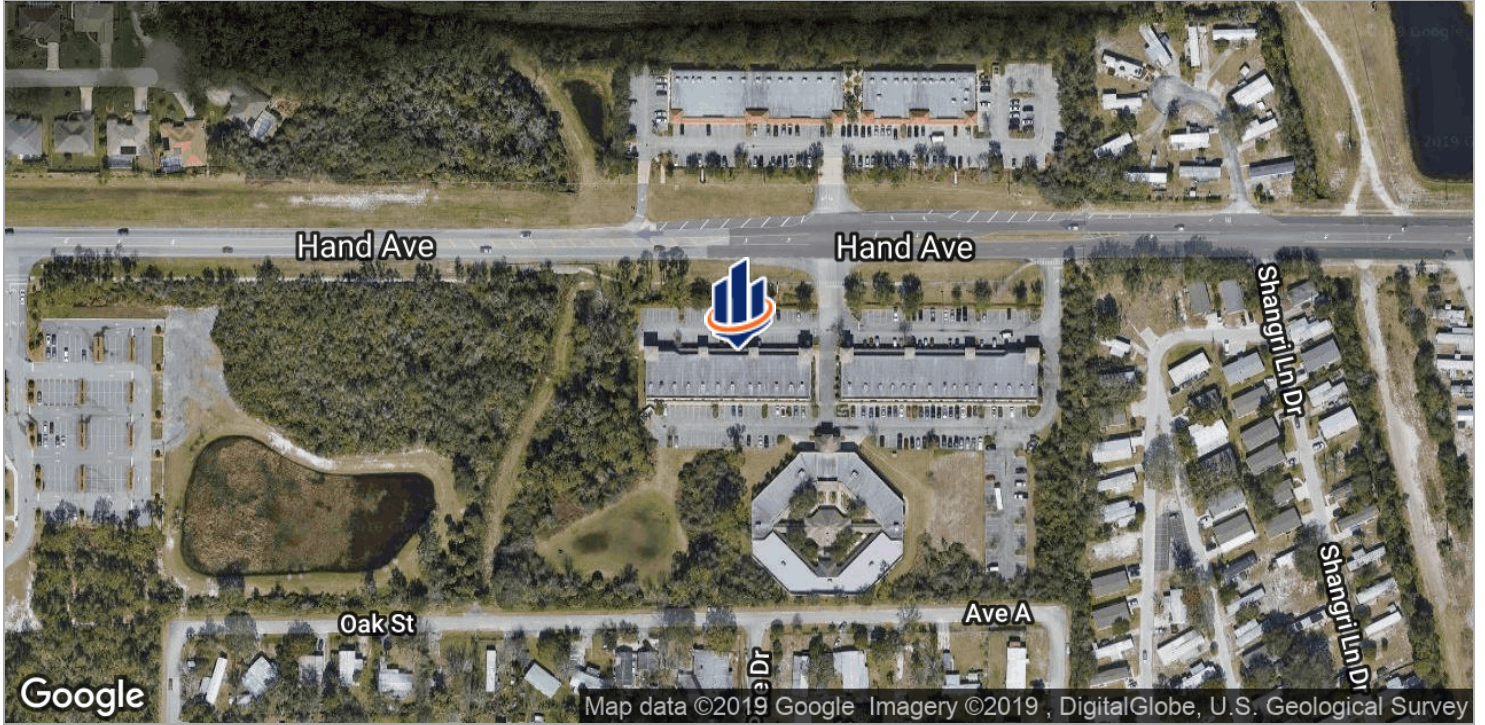
[NOT TO SCALE]

John W. Trost, CCIM
Principal | Senior Advisor
386.301.4581
john.trost@svn.com



The information presented here is deemed to be accurate, but it has not been independently verified. We make no guarantee, warranty or representation. It is your responsibility to independently confirm accuracy and completeness. All SVN® offices are independently owned and operated.

Location Maps

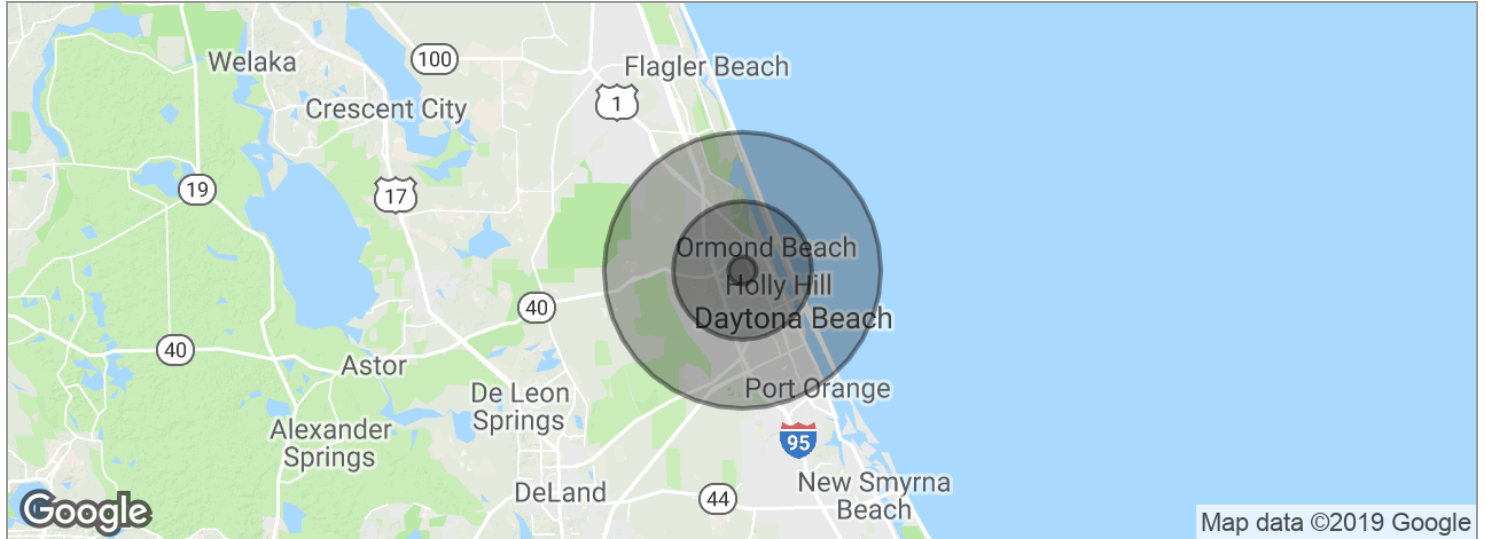


John W. Trost, CCIM
 Principal | Senior Advisor
 386.301.4581
 john.trost@svn.com



The information presented here is deemed to be accurate, but it has not been independently verified. We make no guarantee, warranty or representation. It is your responsibility to independently confirm accuracy and completeness. All SVN® offices are independently owned and operated.

Demographics Map



POPULATION	1 MILE	5 MILES	10 MILES
Total population	9,269	103,120	182,604
Median age	48.7	43.5	43.4
Median age (Male)	45.5	41.9	41.8
Median age (Female)	50.3	44.6	45.1
HOUSEHOLDS & INCOME	1 MILE	5 MILES	10 MILES
Total households	2,715	38,965	77,134
# of persons per HH	2.3	2.3	2.4
Average HH income	\$45,472	\$56,437	\$52,995
Average house value	\$185,059	\$194,764	\$207,764

* Demographic data derived from 2010 US Census

John W. Trost, CCIM
 Principal | Senior Advisor
 386.301.4581
 john.trost@svn.com



The information presented here is deemed to be accurate, but it has not been independently verified. We make no guarantee, warranty or representation. It is your responsibility to independently confirm accuracy and completeness. All SVN® offices are independently owned and operated.