



PRICE REDUCED!

KNIGHTS FARM & RANCH

PLANT CITY, FL | HILLSBOROUGH COUNTY

60 ± ACRES TOTAL



SPECIFICATIONS & FEATURES

Acreage: 60 ± acres

Sale Price: \$575,000

Price per Acre: \$9,583

Site Address: 1123 Fish Farm Rd., Plant City, FL
33565

County: Hillsborough

Water Features: 3 large ponds

Road Frontage: 900 ± ft.

Soil Types: St. Johns, Bassinger, Holopaw, Samsula,
Eaton and Myakka Fine Sands

Uplands/Wetlands: 52.2 ± acres uplands, 7.6 ± acres
wetlands (4.6 Deep Ponds/2.4 Bottomland, .6 Wet
Prairie)

Grass Types: Argentine Bahia and Native Grasses

Water Source & Utilities: Electric - single and 3 phase

Knights Farm & Ranch is a beautiful homesite with plenty of pasture to run a small herd of cattle, horses or farm. This property could also be a family farm for cattle, strawberries or blueberries, which will qualify as organic as there hasn't been conventional farming for past 3 years. The private ponds provide great fishing and the pasture provides plenty of room to ride ATV'S. Just outside of Plant City, Knights Farm & Ranch is not too far from Lakeland, Tampa and Orlando.

Irrigation/Wells: 20 acres under irrigation with CUP for frost and freeze protection (former strawberry farm)

Structures: Large equipment barn (in need of some repairs), 2 rental mobile homes

Taxes: \$877.82 (2017)

Zoning/FLU: A/RR

Fencing: 2 year old 5 strand barbed wire with heavy post

Game Populations: Ample fishing

Current Use: Cattle pasture

LOCATION & DRIVING DIRECTIONS

Parcel IDs:

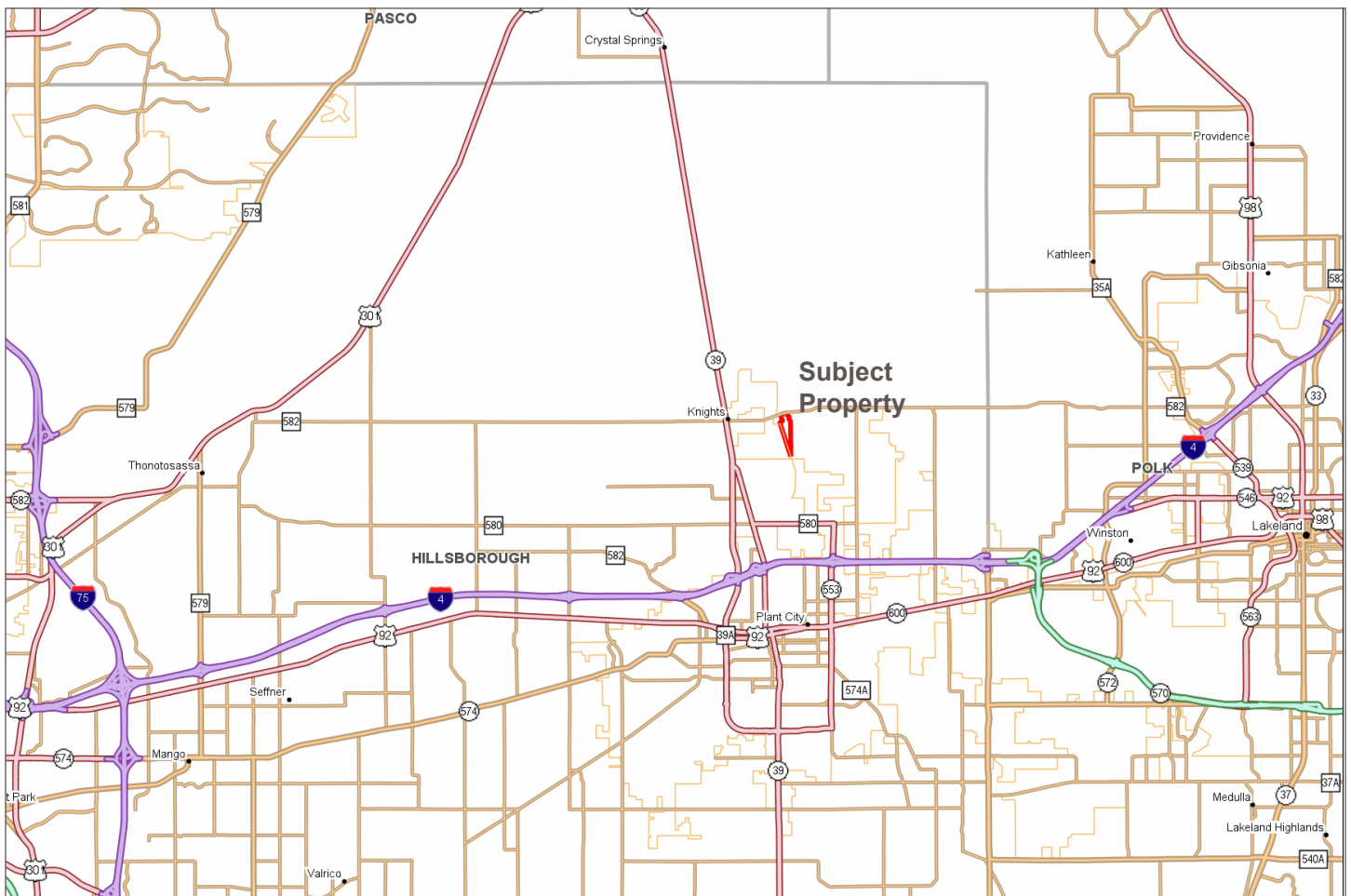
- U-04-28-22-000004-62700.0
- U-04-28-22-000004-62710.0
- U-09-28-22-000004-67090.0

Driving Direction:

- From Plant City take FL Hwy 39 North to Knights Griffin Rd. and turn East (right) and go 1 mile and turn South (right) into the property and cross over the cattle guard.

Showing Instructions: Contact listing agent for showing instructions.

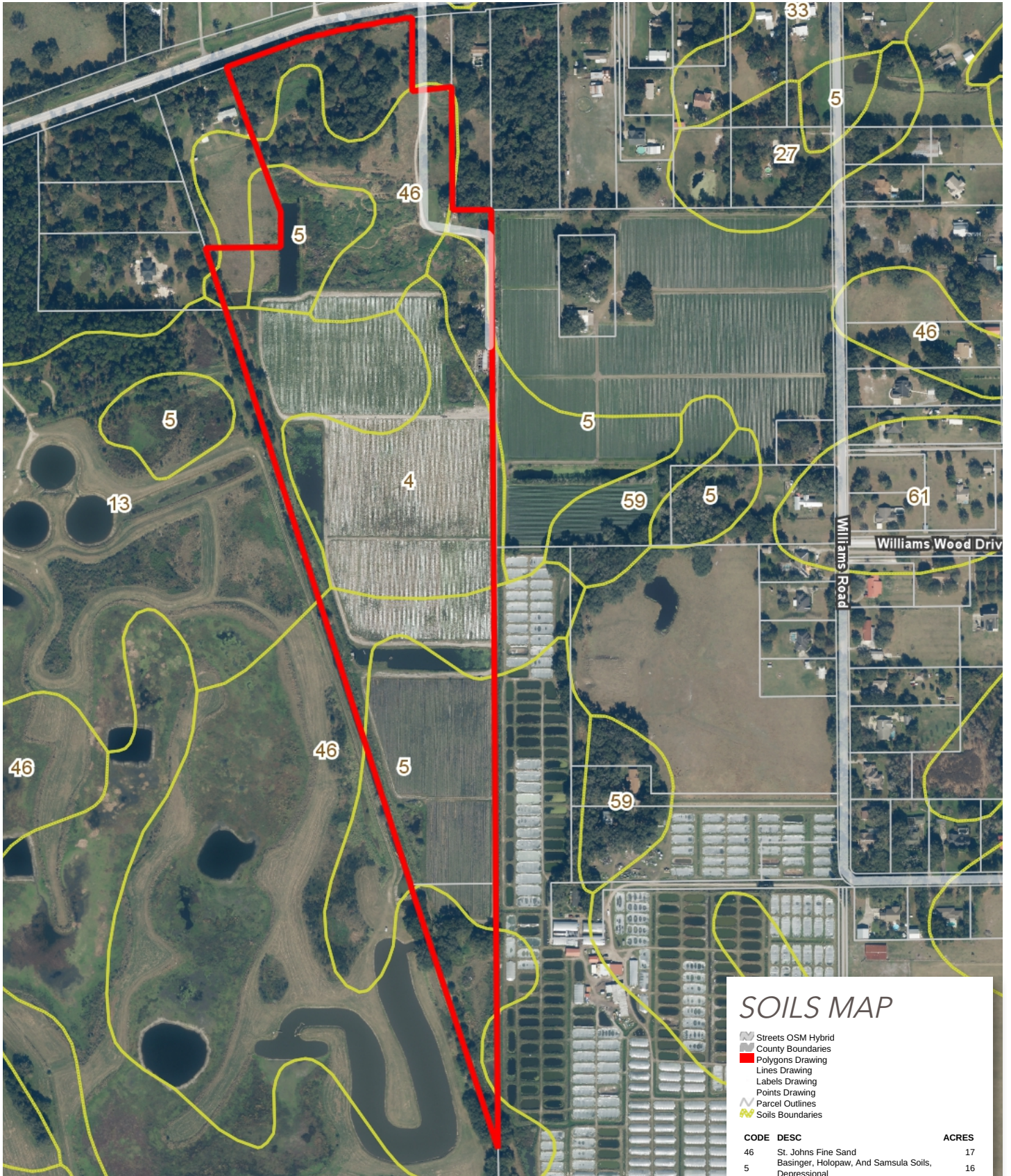
Just a few miles from
Plant City and Lakeland!





Countless recreational possibilities!



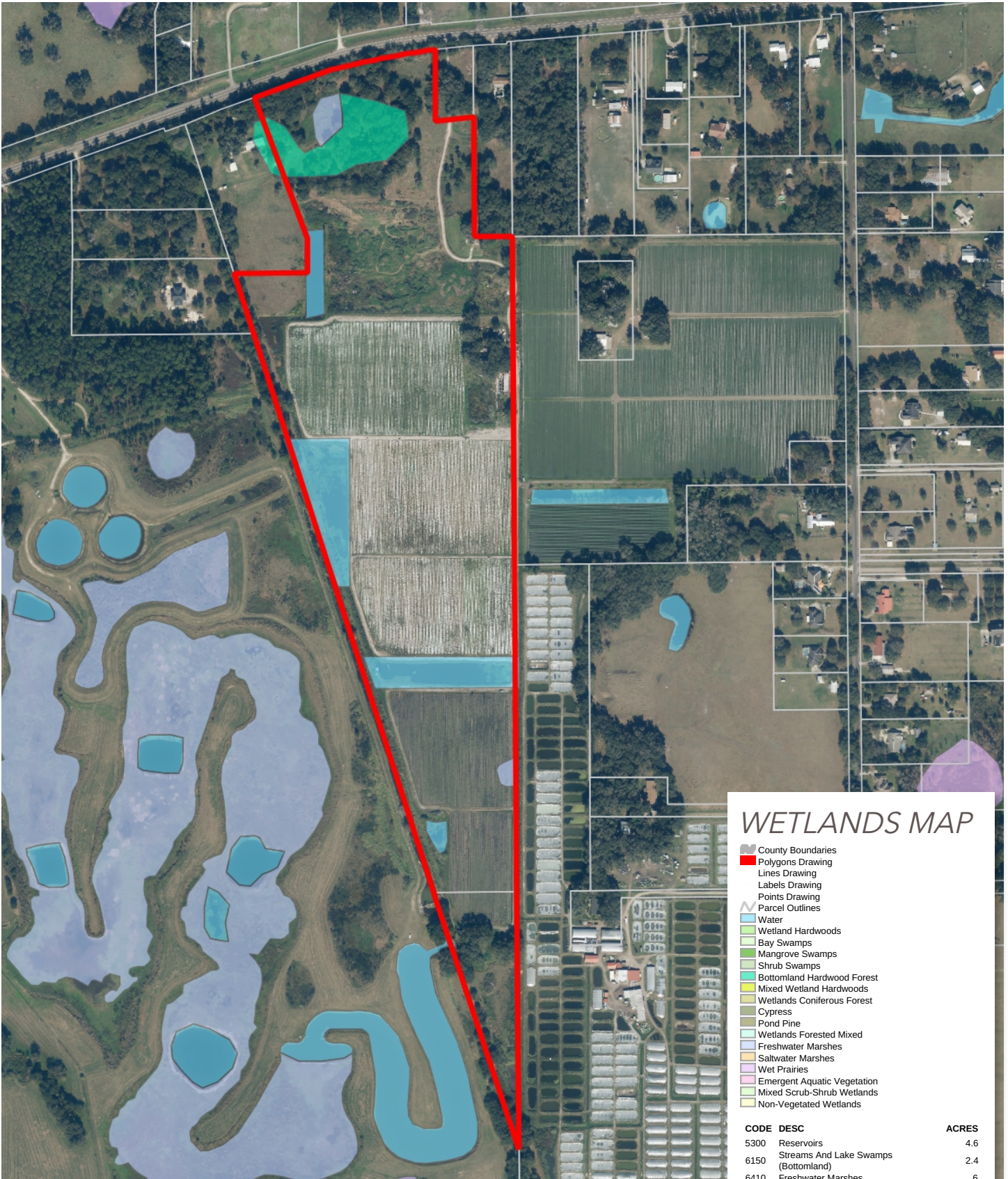


SOILS MAP

- Streets OSM Hybrid
- County Boundaries
- Polygons Drawing
- Lines Drawing
- Labels Drawing
- Points Drawing
- Parcel Outlines
- Soils Boundaries

CODE	DESC	ACRES
46	St. Johns Fine Sand	17
5	Basinger, Holopaw, And Samsula Soils, Depressional	16
4	Arents, Nearly Level	14
13	Eaton Fine Sand	8
29	Myakka Fine Sand	5

TOTAL = 59.7985016645762 acres



WETLANDS MAP

- County Boundaries
- Polygons Drawing
- Lines Drawing
- Labels Drawing
- Points Drawing
- Parcel Outlines
- Water
- Wetland Hardwoods
- Bay Swamps
- Mangrove Swamps
- Shrub Swamps
- Bottomland Hardwood Forest
- Mixed Wetland Hardwoods
- Wetlands Coniferous Forest
- Cypress
- Pond Pine
- Wetlands Forested Mixed
- Freshwater Marshes
- Saltwater Marshes
- Wet Prairies
- Emergent Aquatic Vegetation
- Mixed Scrub-Shrub Wetlands
- Non-Vegetated Wetlands

CODE	DESC	ACRES
5300	Reservoirs	4.6
6150	Streams And Lake Swamps (Bottomland)	2.4
6410	Freshwater Marshes	.6
	TOTAL WETLANDS	7.6
	TOTAL UPLANDS	52.2
	TOTAL ACRES	59.8



Saunders

REAL ESTATE

863.648.1528
114 N. Tennessee Ave.
3rd Floor
Lakeland, FL 33801

60 ± Acres • Former farm, now pastureland for cattle
Country homesite potential
Majority uplands, 3 ponds with plentiful fishing

SREland.com/KnightsFarm

Carson Futch 863.216.5913 | CFutch@SREland.com



LAKELAND OFFICE:
114 N. Tennessee Ave. 3rd Floor
Lakeland, FL 33801
863.648.1528 - Main Office

HIGH SPRINGS OFFICE:
P.O. Box 809 (32655)
18622 NW US 441
High Springs, FL 32643

©2018 Coldwell Banker Commercial Saunders Real Estate. All rights Reserved, Worldwide. Every attempt is made to provide accurate information on this property, however, COLDWELL BANKER COMMERCIAL SAUNDERS REAL ESTATE (CBCSRE) does not guarantee the accuracy. Buyer should rely entirely on their own research, inspection of property, and records.
©2018 Coldwell Banker Real Estate LLC, dba Coldwell Banker Commercial Affiliates. All Rights Reserved. Coldwell Banker Real Estate LLC, dba Coldwell Banker Commercial Affiliates fully supports the principles of the Equal Opportunity Act. Each Office is Independently Owned and Operated. Coldwell Banker Commercial and the Coldwell Banker Commercial Logo are registered service marks owned by Coldwell Banker Real Estate LLC, dba Coldwell Banker Commercial Affiliates.



032018-A