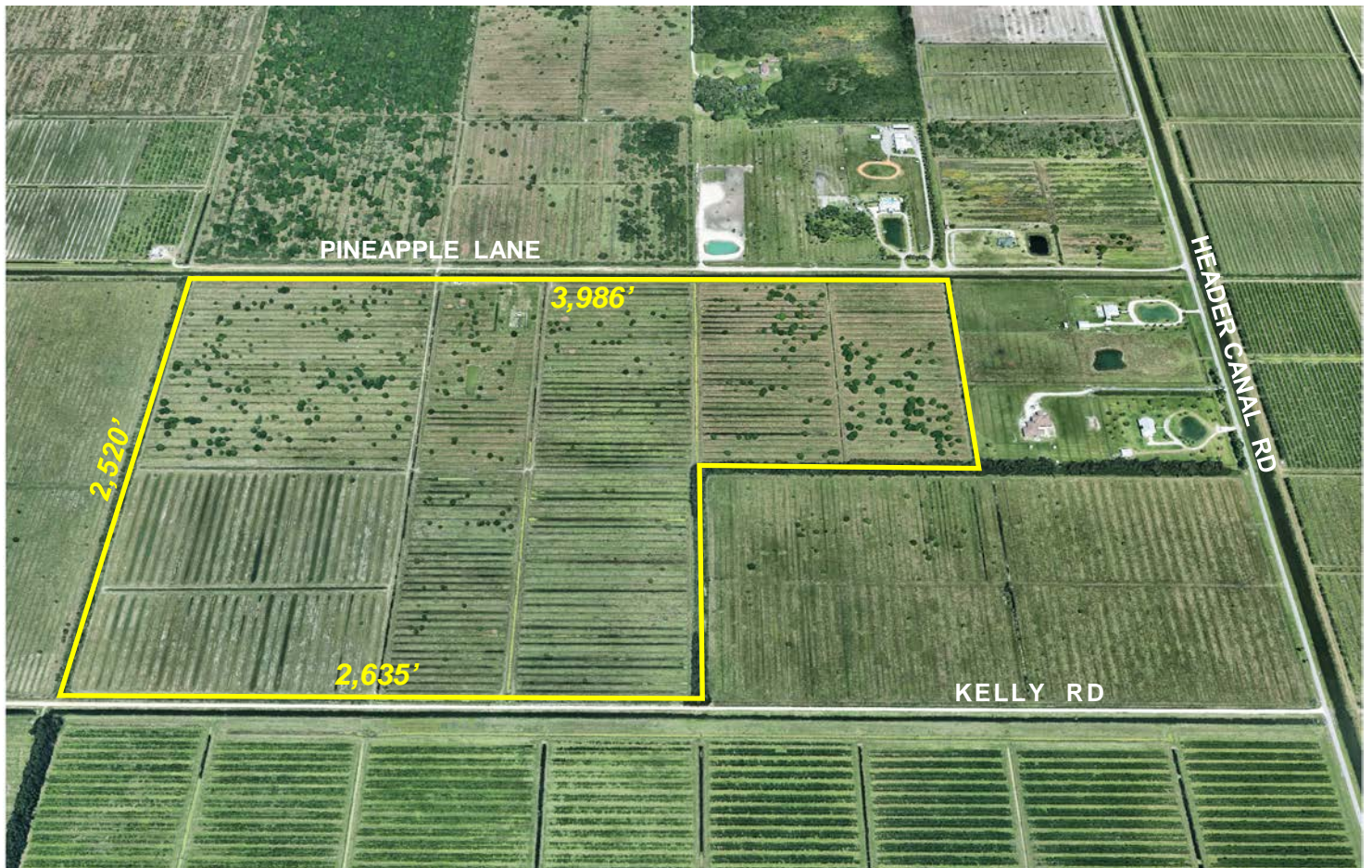


193±ac Pasture

Kelly Road, Fort Pierce, Saint Lucie County, Florida



- DRAINAGE SYSTEM - FORMER CITRUS GROVE
- Direct Drains into NSLRWCD Canals 65 north & 66 south
- .5 mile frontage Kelly Rd and .75 mile frontage Pineapple Lane
- CROSS FENCING
- CATTLE WORKING PENS
- ARTESIAN WELLS
- AG - 5 ZONING
- AG EXEMPT TAXES for CATTLE GRAZING
- 3.75 mi North of Okeechobee Rd; 1.25 mi South of Orange Ave
- St Lucie County PID: 2214-311-0001-000-5; MLS # RX-10465388

\$1,700,000.

~ Please call Mark before visiting the property: (772) 201-5650 ~



**mark walters
& company**
real estate brokers & auctioneers

www.waltersco.com • email: mark@waltersco.com
531 South US Hwy 1, Suite B • Fort Pierce, FL 34950
Office (772) 468-8306 • Cell (772) 201-5650

