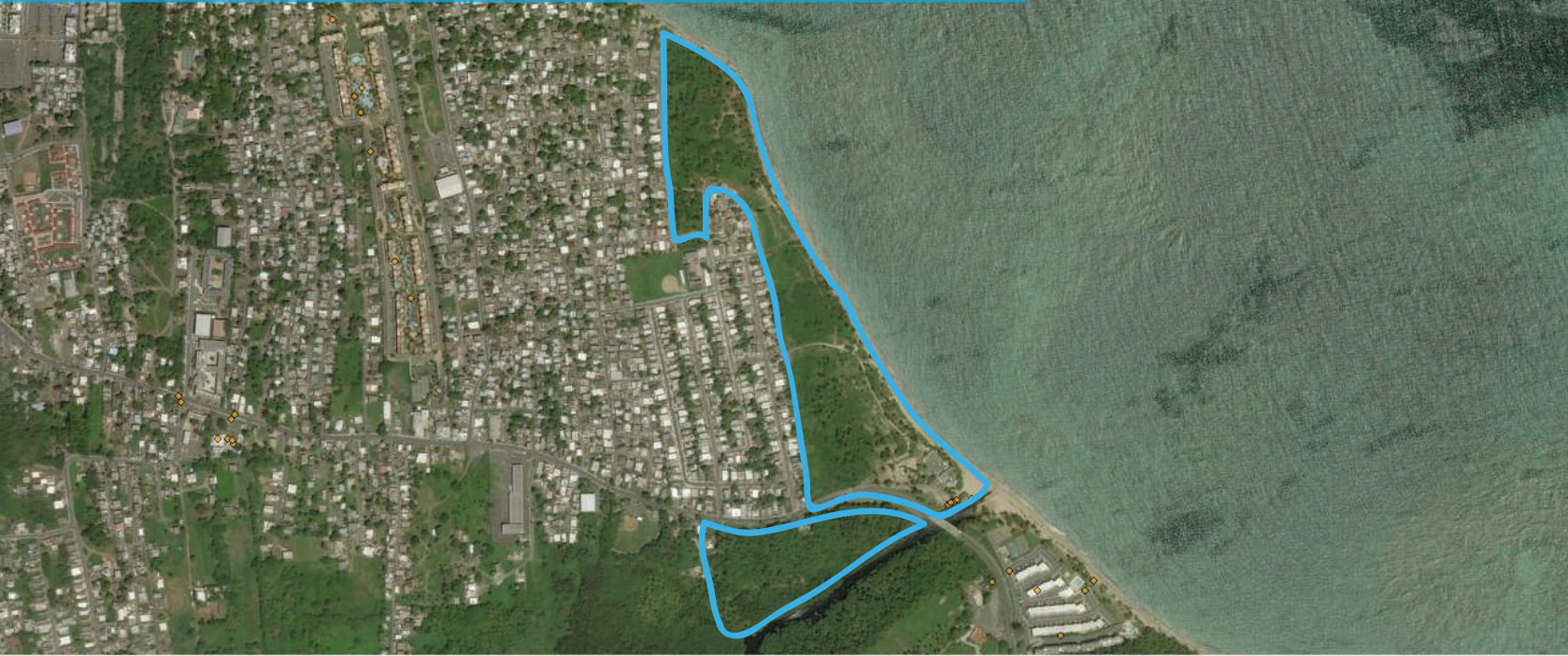




CHRISTIANSEN
COMMERCIAL REAL ESTATE
License 134



VACANT OCEANFRONT PARCEL FOR SALE

PR-187 LOIZA, PUERTO RICO

PROPERTY DETAILS

Parcel A was originally proposed to be developed with a tourist/residential project to be named Playa de Berwind, consisting of a hotel with 300 rooms and 174 two story townhouse units with supporting amenities. Parcel B is considered undevelopable, given its closeness to the Herrera River and reportedly, it was to be used as a complimentary low-impact use (nature trails) for the proposed residential/tourist project.

SITE AREA:

138,322.2590 square meters

ZONING:

UR (Developable Land)

COORDINATES:

18.42629165, -65.83224255

American International Plaza
250 Muñoz Rivera Avenue Suite 350
Hato Rey, Puerto Rico 00918
www.christiansencommercial.com
787-778-7000



CAMERA SCAN FOR MORE DETAILS