



OFFICE CONDOMINIUM FOR LEASE/SALE

1319 ASHFORD AVE., CONDADO, SAN JUAN, PUERTO RICO

PROPERTY DETAILS

Approximately 3,414 sq. feet available on the second floor of Condado Son Sid building. Office space is currently sub-divided from into four units.

Rentable SF:

Suite 1A - 669 sq. ft. (Leased until June 2020)

Suite 1B - 807 sq. ft. (Leased until Dec 2018)

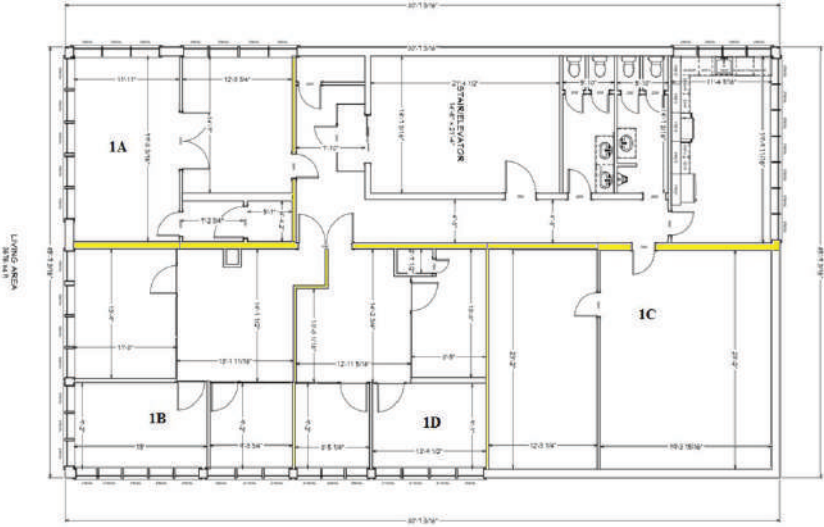
Suite 1C - 1,024 sq. ft. (Owner occupied)

Suite 1D - 678 sq. ft. (Available for lease)

LOCATION INFLUENCE

Excellent location on Ashford Avenue in the heart of Condado across from Freshmart, Danny's Pizza, Via Appia's, Yerba Buena, among other restaurants and markets. Close to many residential, office, hospitality, commercial and retail establishments such as commercial strip centers, private schools, hospital, resort hotels and bed & breakfast inns, among other related services. Enjoys the utilities typical of an urban neighborhood with the municipal services of San Juan.

1319 ASHFORD AVE., CONDADO, SAN JUAN, PUERTO RICO



American International Plaza
250 Muñoz Rivera Avenue Suite 350
Hato Rey, Puerto Rico 00918
www.christiansencommercial.com
787-778-7000

QR CODE

CAMERA SCAN FOR MORE DETAILS