

**R-4 Land
FOR SALE**

APPROXIMATELY
14.66 ACRES



PRIME DEVELOPMENT

PROPERTY HIGHLIGHTS

- 14.66 acres vacant land;
- Zoned R-4 for residential development;
- Mature and attractive neighborhood;
- Near to Calusa Elementary, Krinn Technical High School, Marchman Technical College and The Genesis School, a prestigious private school'
- Easy access to property via Ridge Road, a major east-west arterial, to Lemon Street and to Orchid Lake Rd.

Offered at: \$259,000

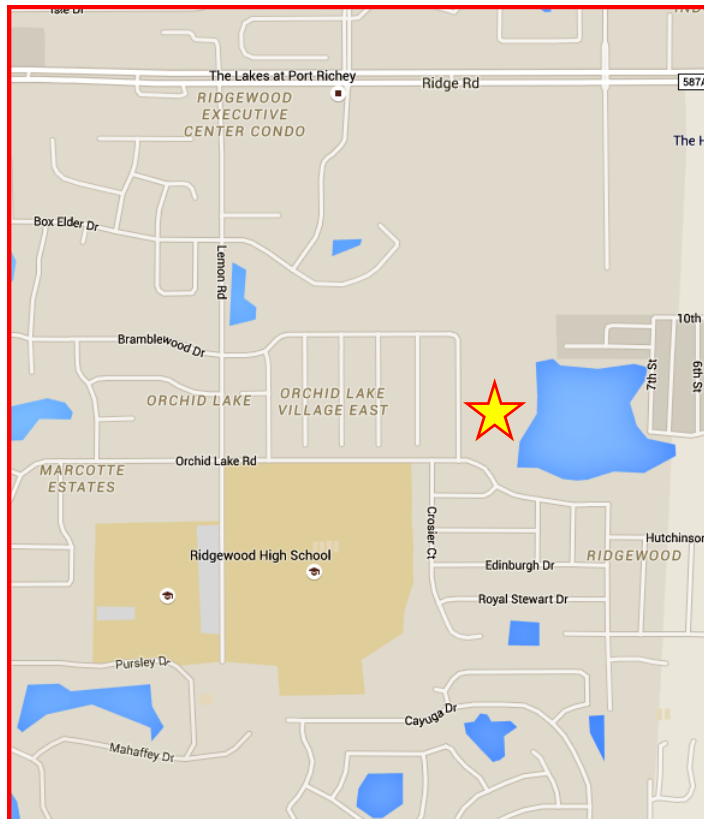
FOR INFORMATION, CONTACT:

Charles R. Grey
Chuck@figrey.com

John Grey, ALC
info@figrey.com

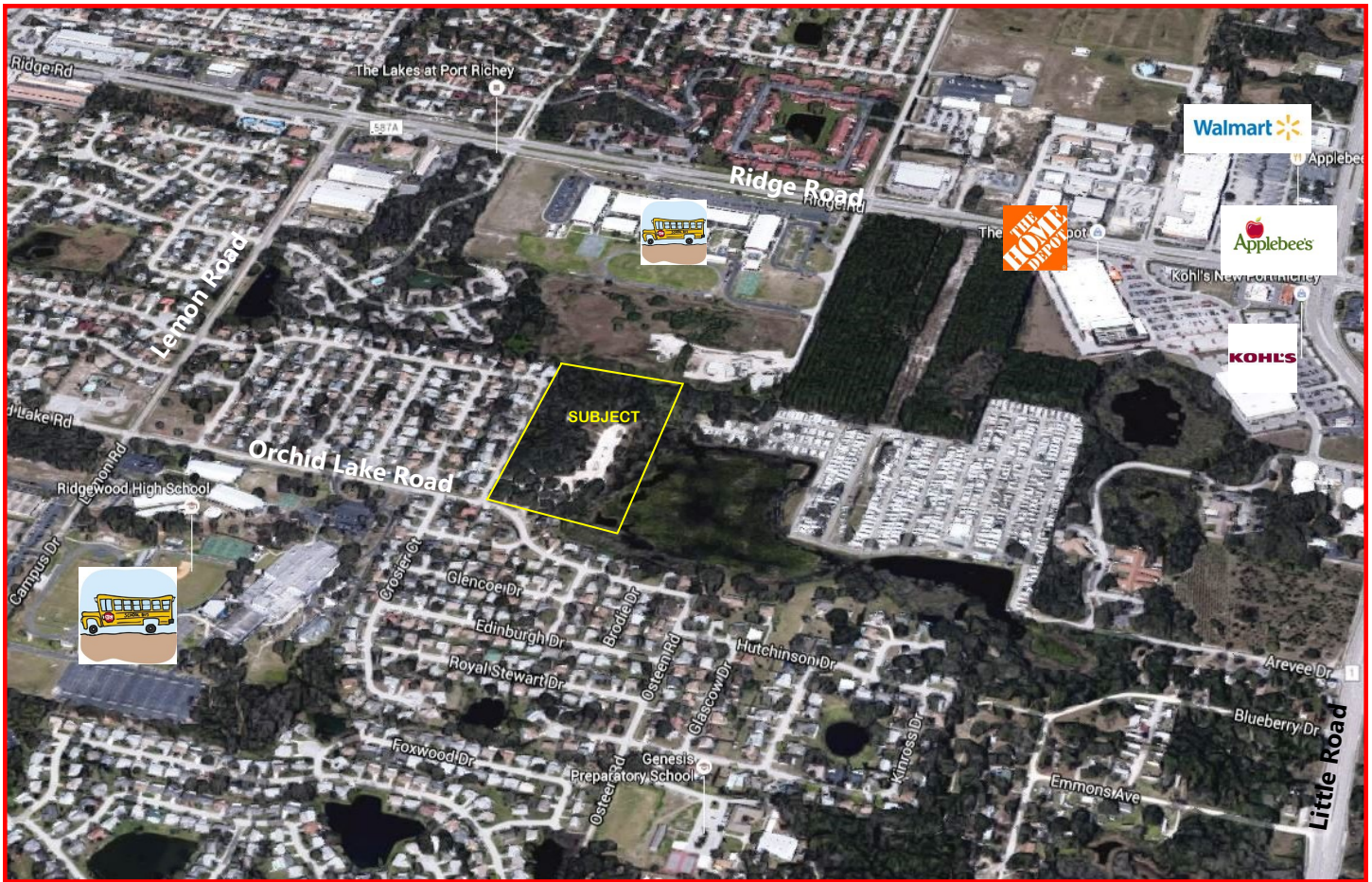


Office: (727) 849-2424



6328 US HWY 19, NEW PORT RICHEY, FL 34652 (727) 849-2424 WWW.FIGREY.COM

ORCHID LAKE & PAPERBARK, PORT RICHEY, FL 34668



DEMOGRAPHICS

<i>Radius</i>	<i>1-Mile</i>	<i>3-Mile</i>	<i>5-Mile</i>
Population:	9,385	67,716	144,131
Households:	4,227	28,962	62,678
Average HH Inc:	\$48,112	\$52,143	\$54,262

PROPERTY STATISTICS

Proposed Use:	High Density Residential	Topography:	High Sandy Soil
Zoning:	R-4	Size:	14.66 AC

FOR INFORMATION, CONTACT:

Charles R. Grey
Chuck@figrey.com

John R. Grey
info@figrey.com

Office: (727) 849-2424

Serving Florida for over 90 years!



COMMERCIAL REALTOR®
Established 1924



6328 US HWY 19, NEW PORT RICHEY, FL 34652 (727) 849-2424 WWW.FIGREY.COM

The information given herewith is obtained from sources we consider reliable. We are not responsible for misstatements of facts, errors, omissions, changes in terms or conditions, or withdrawal from the market without prior notice.