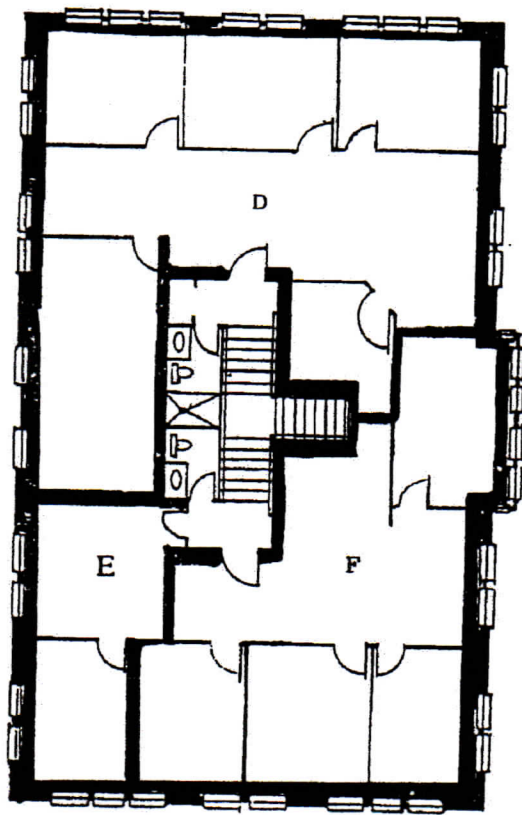
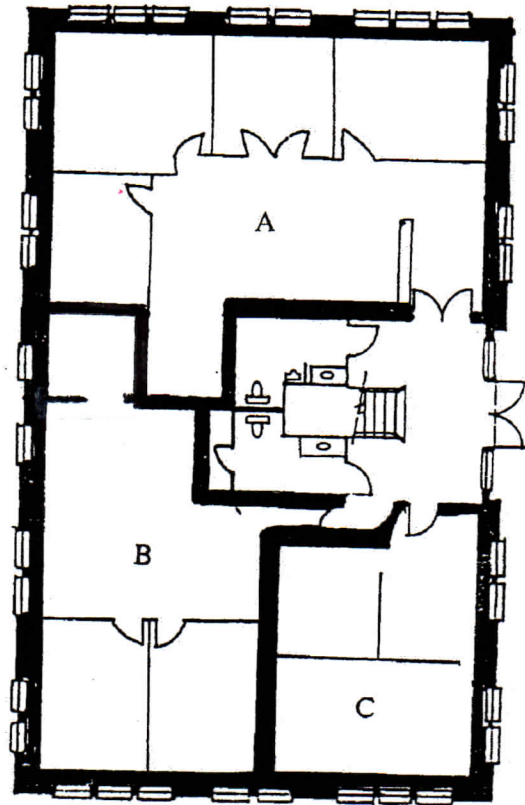


LEGAL DESCRIPTION
1353 PALMETTO AVENUE, WINTER PARK, FLORIDA

Lots 146 and 147, PALMETTO'S ADDITION TO WINTER PARK, according to the Plat thereof as recorded in Plat Book E, Page 14, Public Records of Orange County, Florida.



SECOND FLOOR PLAN



FIRST FLOOR PLAN



PALMETTO OFFICE BUILDING