



VACANT LAND FOR SALE

EAST OF KM 0.4, STATE ROAD PR-686, COTO NORTEWARD, MANATÍ, PUERTO RICO

PROPERTY DETAILS

The property consists of a vacant land parcel covered with grass and vegetation, zoned for agricultural use. It enjoys a level to hilly topography, then rolls downwards towards the east. However, it is at grade in terms of State Road PR-686 to its west. It has an irregular shape, and a non-floodable condition. The property has an electrical easement passing through its northern boundary and two water well easements that affect development and/or utility.

SITE AREA

9.99 Cuerdas or 39,265.08 meters

ZONING:

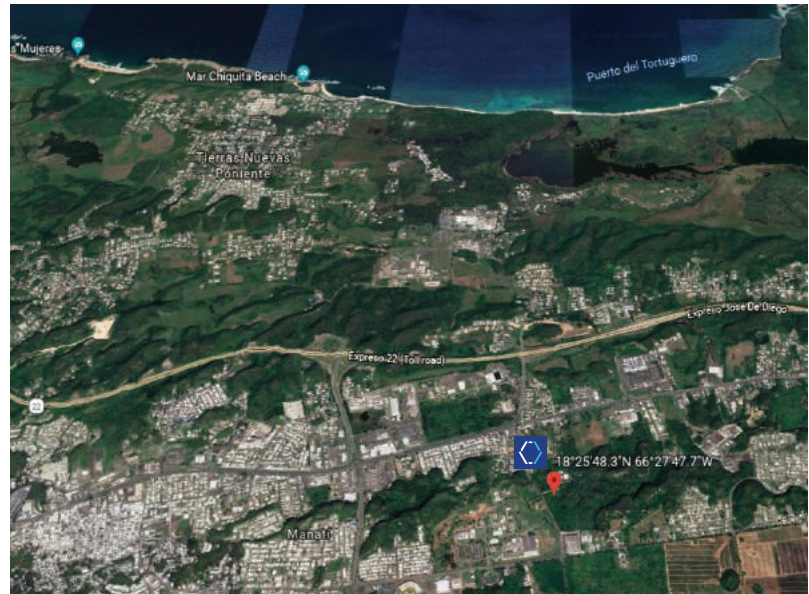
(LT-A1) Tortuguero Lagoon Machinable
Agricultural

COORDINATES:

Latitude 18.430510

Longitude -66.464011

EAST OF KM 0.4, STATE ROAD PR-686, COTO NORTEWARD, MANATÍ, PUERTO RICO



American International Plaza
250 Muñoz Rivera Avenue Suite 350
Hato Rey, Puerto Rico 00918
www.christiansencommercial.com
787-778-7000

