

JFowler
Commercial



Jack Fowler, CCIM

(928) 899-1378

Jack@JFowlercommercial.com

www.JFowlercommercial.com

OFFERED FOR SALE

**1135 & 1157 W. Gurley
Prescott, AZ**



ZONED BG-Business General

MLS# 923925

PRICE REDUCED - OWNER MAY CARRY! Gorgeous property only blocks from downtown with trees, boulders, and seasonal Butte Creek running through the property. This private setting is Perfect for your home, multifamily project, or destination business. Sale also includes 1157 W Gurley, parcel #111-12-011B. Structures convey without value. Bring your plans, hire a contractor, and make your dreams come true on this one of a kind property.



OFFERED AT \$279,000



CCIM

JFowler
Commercial



Jack Fowler, CCIM

(928) 899-1378

Jack@JFowlercommercial.com

www.JFowlercommercial.com

Address: 1135 & 1157 W Gurley
Parcel No.: 111-12-010 & 111-12-011B
Zoning: BG-Business General

For more information on zoning go to:

<http://www.codepublishing.com/AZ/Prescott/>

Lot Size: 1.09 acres
Fencing: No

Amenities: Seasonal Creek
Boulders & Pines

Utilities Installed: Electricity
220
Telephone
Call listing agent for water and sewer
information

PRICE REDUCED - OWNER MAY CARRY!

**Additional
Information:**

Gorgeous property only blocks from downtown with trees, boulders, and seasonal Butte Creek running through the property. This private setting is Perfect for your home, multifamily project, or destination business. Sale also includes 1157 W Gurley, parcel #111-12-011B. Structures convey without value. Bring your plans, hire a contractor, and make your dreams come true on this one of a kind property.



JFowler
Commercial



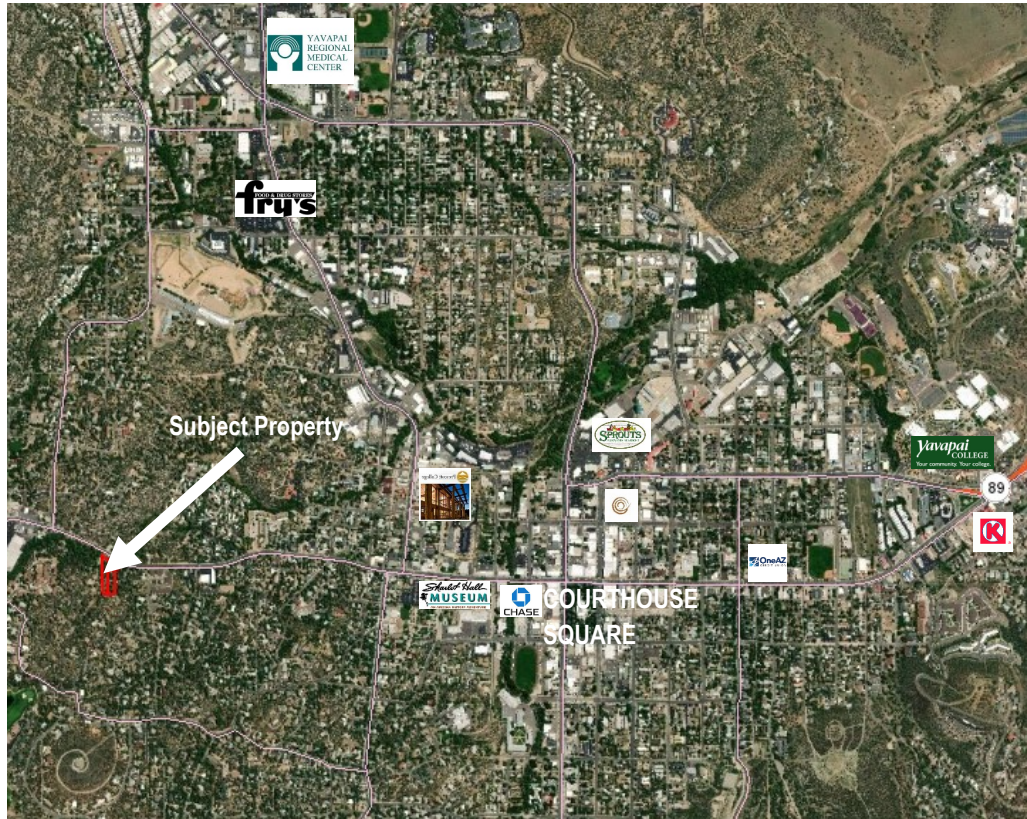
Jack Fowler, CCIM

(928) 899-1378

Jack@JFowlercommercial.com

www.JFowlercommercial.com

PROPERTY LOCATION AND AREA INFORMATION



Prescott is a city in Yavapai County, Arizona, United States.

According to the 2010 Census, the population of the city is 39,843. The city is the county seat of Yavapai County. In 1864 Prescott was designated as the capital of the Arizona Territory, replacing the temporary capital at Fort Whipple. The Territorial Capital was moved to Tucson in 1867. Prescott again became the Territorial Capital in 1877, until Phoenix became the capital in 1889. Prescott is located in the Bradshaw Mountains of central Arizona, at an elevation of 5,400 feet.

The information contained herein has been obtained from sources believed reliable. While we do not doubt its accuracy, we have not verified it and make no guarantee, warranty or representation about it. It is your responsibility to independently confirm its accuracy and completeness. Any projections, opinions, assumptions, or estimates used are for example only and do not represent the current or future performance of the property. The value of this transaction to you depends on tax and other factors which should be evaluated by your tax, financial, and legal advisors. You and your advisors should conduct a careful, independent investigation of the property to determine to your satisfaction the suitability of the property for your needs.