

10 PARCELS FOR SALE

206, 222, 230 Emery Hwy,
221, 227, 233 Astor St,
627, 629 E. Melrose St.

Macon, GA, 31217



Lot Size: 1.34 acres (10 parcels)

Bldg Size: 1,000 sf

Frontage: 172' on Emery Hwy

Zoning: C-2

Topography: Flat

Year Built: 1987

Traffic: 18,400 vpd

Notes: Property is in a high visible area with a high traffic count. Macon Bibb County Health Department is directly across the street. Adjacent to east of property is a new construction for Houston Co. Medical.

~~**Sales Price: \$299,000**~~

Reduced Price: \$195,000

**FOR MORE
INFORMATION
CONTACT**

Trip Wilhoit, CCIM, ALC
478-746-9421
478-960-4080
trip@fickling.com

Patty Burns, CCIM, ALC
478-746-9421
478-951-5100
patty@fickling.com

georgiacommercialrealestate.net | commercial.fickling.com

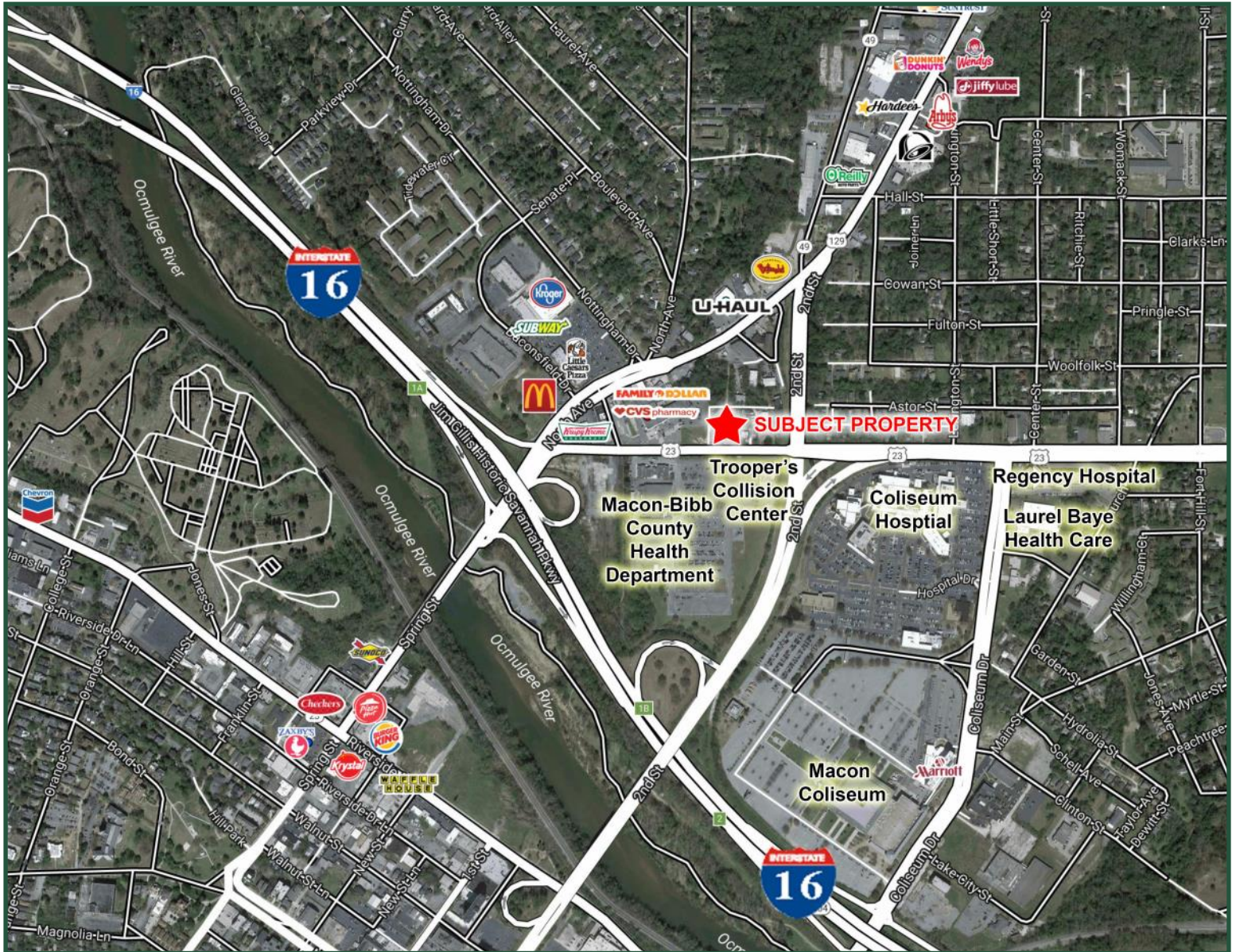
577 Mulberry St, Suite 1100 * P.O. Box 310 * Macon, GA 31202 | Phone (478) 746-9421 | Fax (478) 742-2015

10 PARCELS FOR SALE

206, 222, 230 Emery Hwy,
221, 227, 233 Astor St,
627, 629 E. Melrose St.

Macon, GA, 31217

AERIAL



**FOR MORE
INFORMATION
CONTACT**

Trip Wilhoit, CCIM, ALC
478-746-9421
478-960-4080
trip@fickling.com

Patty Burns, CCIM, ALC
478-746-9421
478-951-5100
patty@fickling.com

georgiacommercialrealestate.net | commercial.fickling.com

577 Mulberry St, Suite 1100 * P.O. Box 310 * Macon, GA 31202 | Phone (478) 746-9421 | Fax (478) 742-2015