



## 463 Paris Island Gateway, Beaufort, SC 29902

### Property Information

**Acres**  
1.51

**PRICE**  
\$395,000

**Features**  
Corner Lot  
333 ft frontage  
High Traffic count

**Description**  
1.5 acres with over 300 feet of frontage on Parris Island Gateway. Frontage on 3 sides and great visibility make this a strong redevelopment opportunity. There has been a successful business in this location for well over 20 years. Water and sewer are at the site.



**Michael Mark | MMark@CCIM.Net**  
**(843) 812-6023**

**Charter One Realty**  
**1 Promenade St, Suite 101**  
**Bluffton, SC 29910**  
**843-815-0055**



## SCDOT Traffic Counts 2009-2017

A product of SCDOT GIS/Mapping



2017 Traffic Counts

2016 Traffic Counts

2015 Traffic Counts

2014 Traffic Counts

2013 Traffic Counts

2012 Traffic Counts

2011 Traffic Counts

2010 Traffic Counts

2009 Traffic Counts

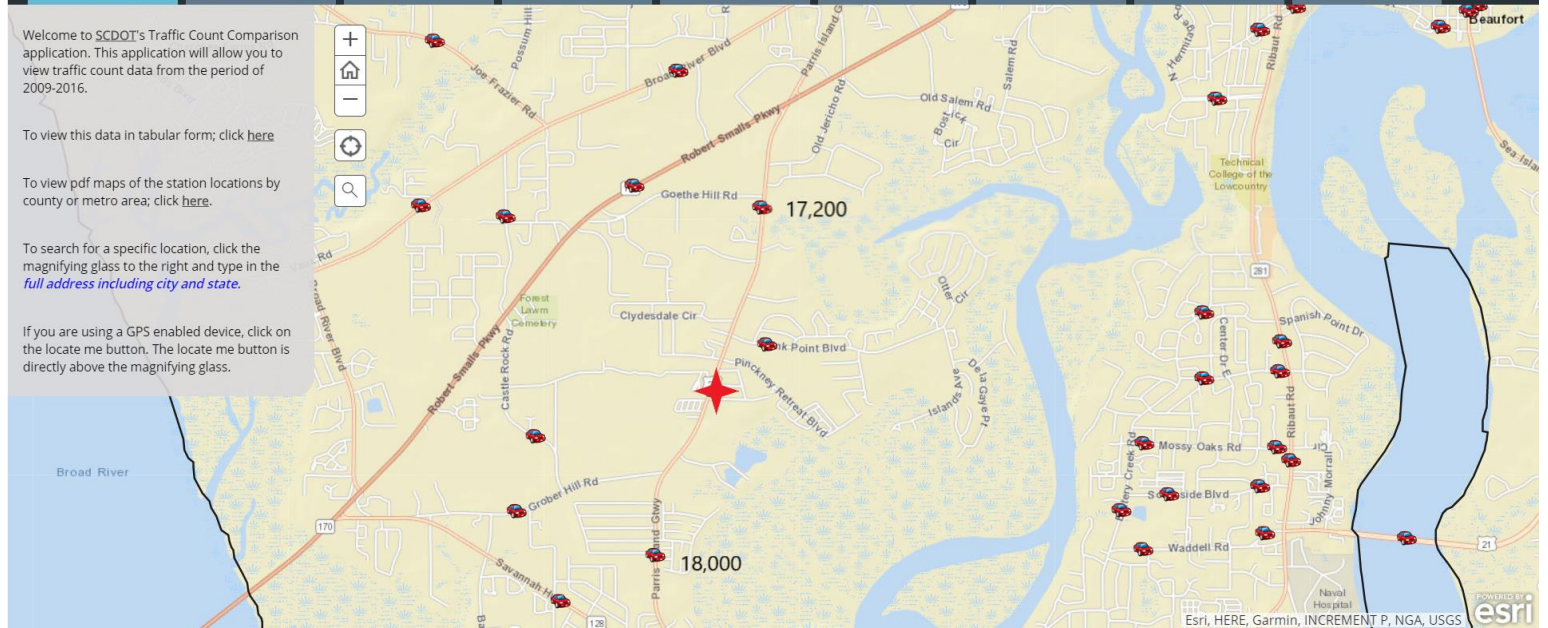
Welcome to SCDOT's Traffic Count Comparison application. This application will allow you to view traffic count data from the period of 2009-2016.

To view this data in tabular form; click [here](#)

To view pdf maps of the station locations by county or metro area; click [here](#).

To search for a specific location, click the magnifying glass to the right and type in the [full address including city and state](#).

If you are using a GPS enabled device, click on the locate me button. The locate me button is directly above the magnifying glass.



POWERED BY esri  
Esri, HERE, Garmin, INCREMENT P, NGA, USGS



**Michael Mark | MMark@CCIM.Net**  
**(843) 812-6023**

**Charter One Realty**  
**1 Promenade St, Suite 101**  
**Bluffton, SC 29910**  
**843-815-0055**