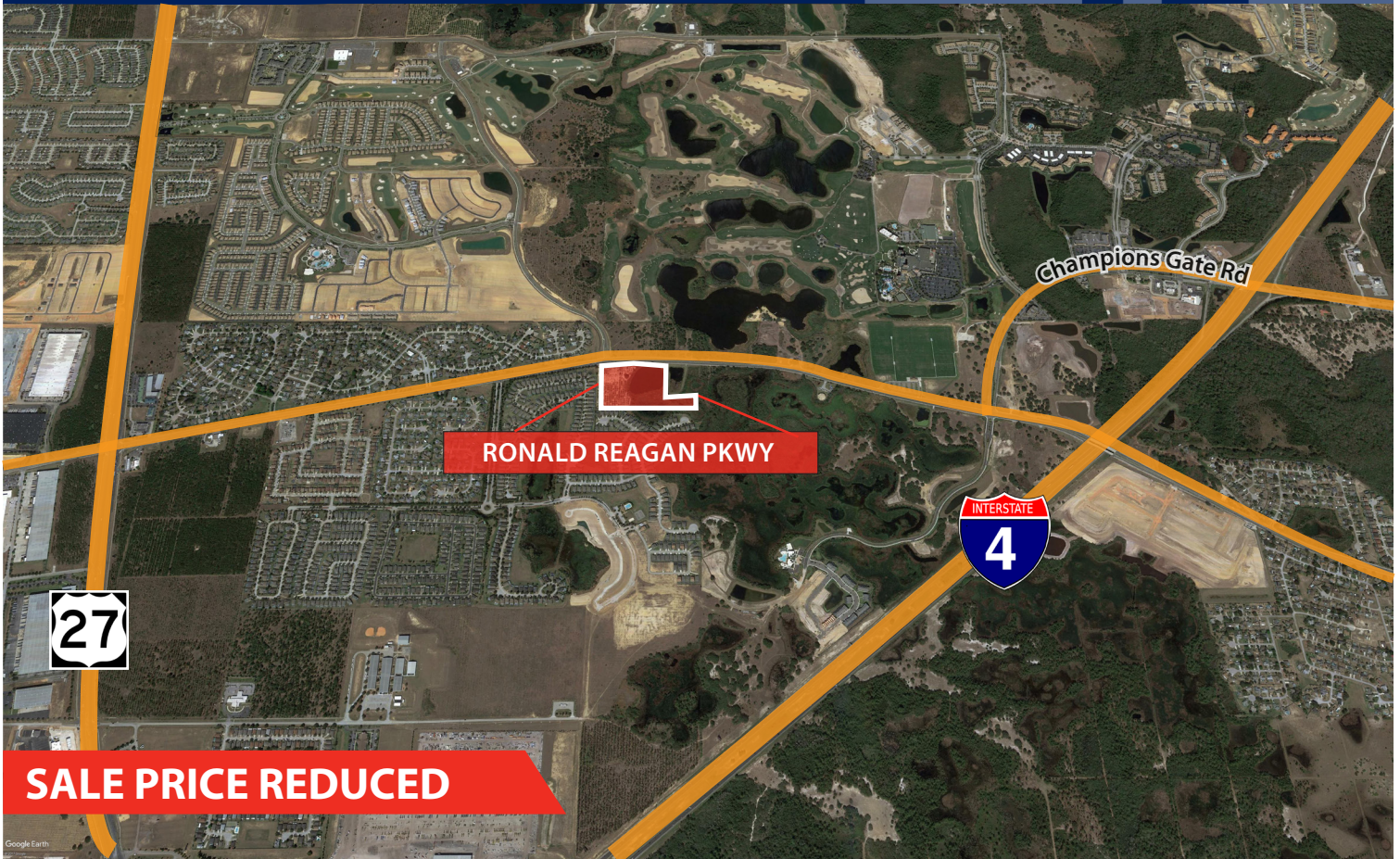


15.78 ± LAKEFRONT ACRES - FOR SALE



Property Specifics

Location:	Ronald Reagan Pkwy, Davenport, FL 33896
Access:	Ronald Reagan Pkwy
Parcel ID:	27-26-05-000000-033040
Total Land Area:	15.78 acres; 7.65 acres of usable uplands
	Environmental Report Conducted Sept 2017
Municipality:	City of Davenport, Polk County
Zoning:	R-L4X
Density and Dimensional Regulations	
Minimum	3 du/ac

***Higher density may be achieved through PD**



**Environmental Report conducted September 2017;
available upon request.**

THE INFORMATION CONTAINED HEREIN WAS OBTAINED FROM SOURCES BELIEVED RELIABLE; HOWEVER, AVISON YOUNG MAKES NO GUARANTEES, WARRANTIES OR REPRESENTATIONS AS TO THE COMPLETENESS OR ACCURACY THEREOF. THE PRESENTATION OF THIS PROPERTY IS SUBMITTED SUBJECT TO ERRORS, OMISSIONS, CHANGE OF PRICE, OR CONDITIONS, PRIOR TO SALE OR LEASE, OR WITHDRAWAL WITHOUT NOTICE.

SALE PRICE: \$820,000

For more information, contact:

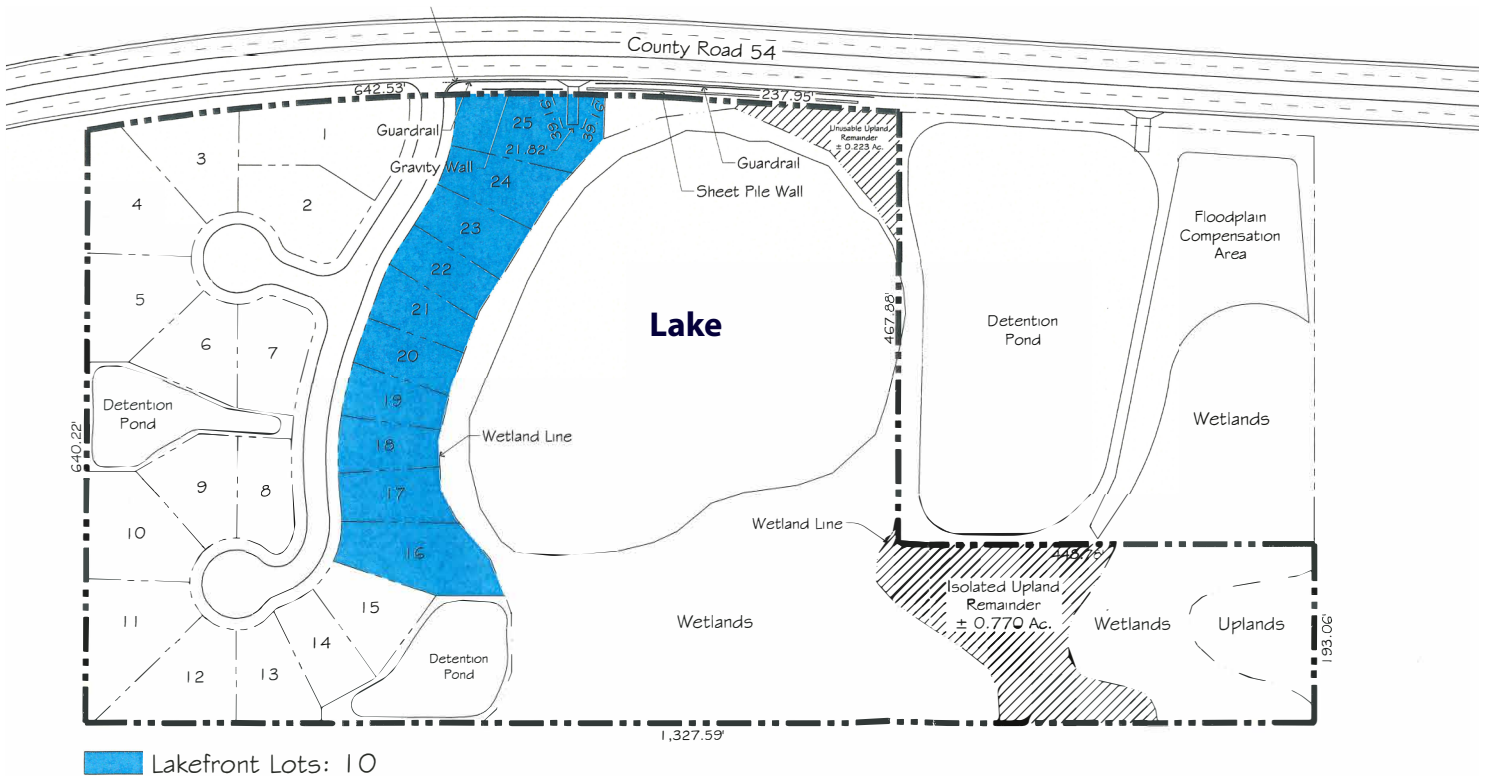
407.342.4698

Lawson Dann
lawson.dann@avisonyoung.com

PRISTINE 4.5 AC ± LAKE



**25 Lot Lakefront Development; Higher density may be achieved
Under \$33,000/ lot**



For more information, contact:

407.440.6646

Lawson Dann

lawson.dann@avisonyoung.com

