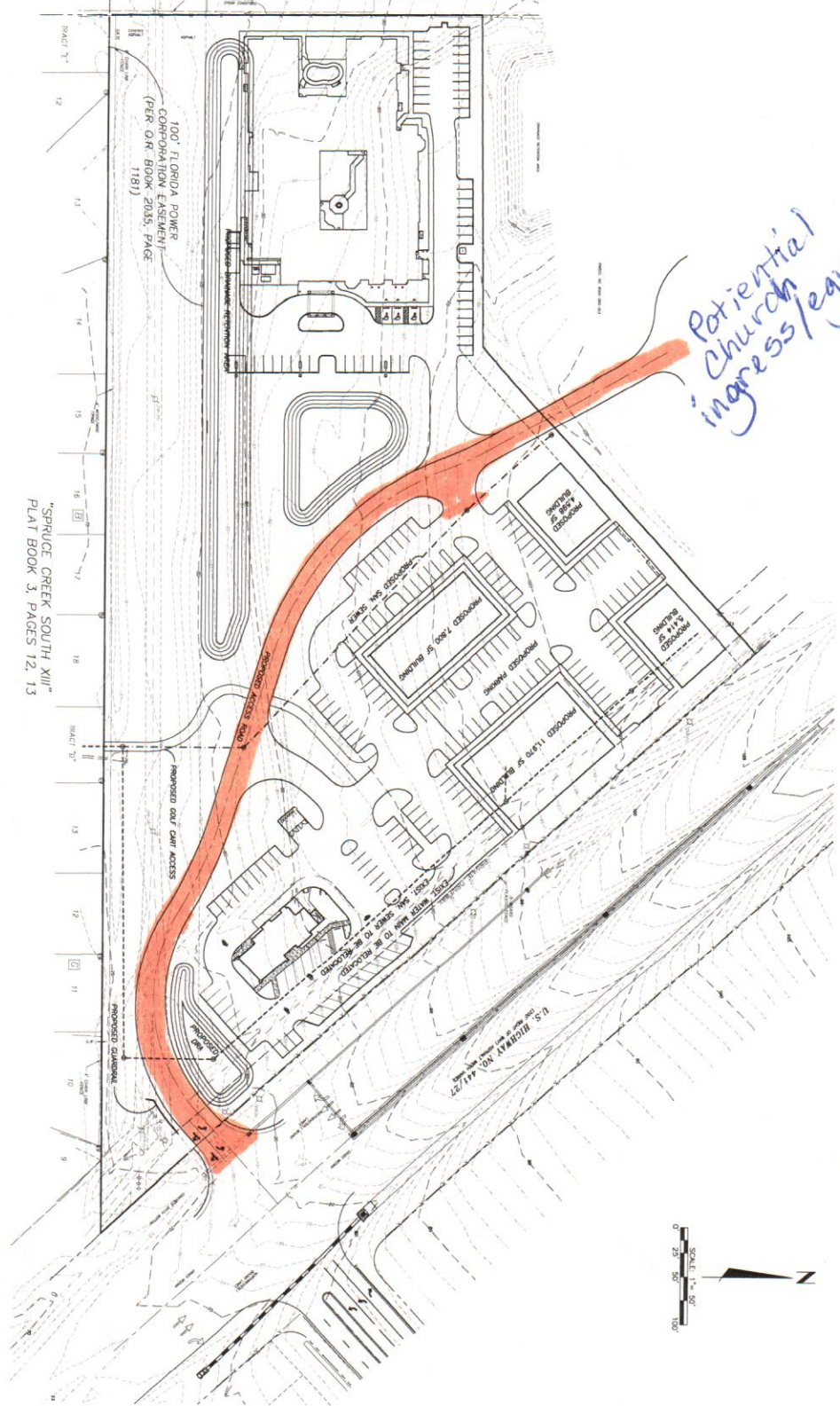


"BRIDLE TRAIL ESTATES"
PLAT BOOK U, PAGES 97, 98



"SPRUCE CREEK SOUTH XIII"
PLAT BOOK 3, PAGES 12, 13

Potential
Church
ingress/egress

SHEET
1
OF
1

CONCEPTUAL LOT LAYOUT
SOUTH 441
VILLAGE BLUFF
MARION COUNTY, FLORIDA

NO	REVISION	BY	DATE
DESIGN	D.T.C.		8-28-11
DRAW	D.T.C.		PROJECT 11027
CHECK	J.C.L.		FILE

LONDON ENGINEERING
and Associates, Inc.
2201 S.E. 30th Avenue, Suite 101 Ocala, Florida 34471
Phone: (352) 690-9551 Fax: (352) 690-6171
CERTIFICATE OF AUTHORIZATION # 3308
JOSEPH C. LONDON, P.E. # 33694 D. TODD CROSSBY, P.E. # 54000