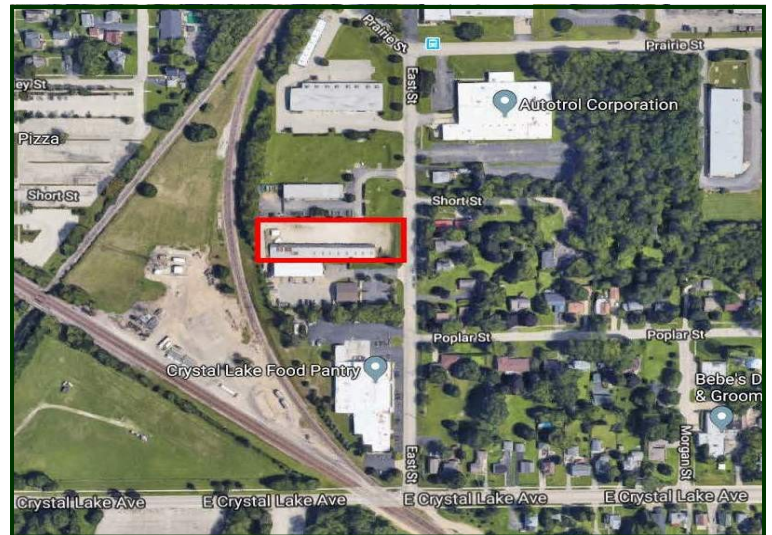


FOR SALE

Industrial Land 1.02 Acre Bank Owned

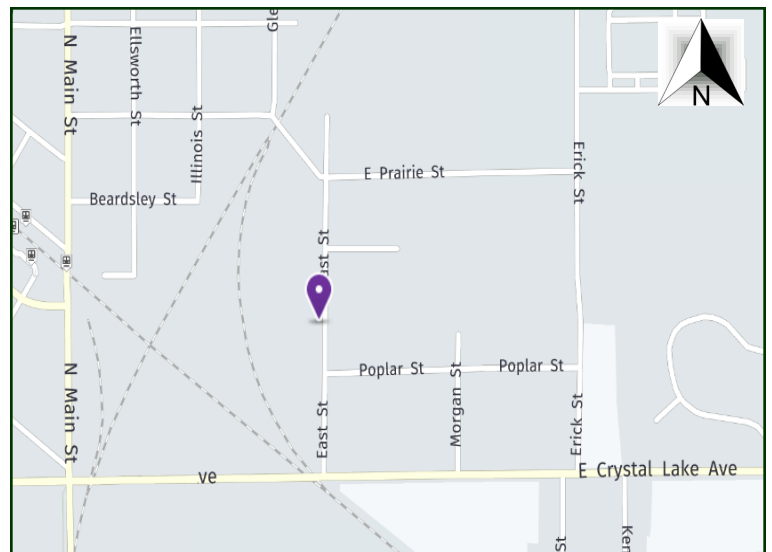
Bank owned 1.02 acre industrial zoned land parcel. Access from auto repair shop driveway to the north via easement. City water is across the street, sanitary is in the middle of the street. City will require 11,000 SF shed to be removed. Bank may help finance land and new building with new SBA loan with as little as 10% down. Only \$3.92 psf. Visit Premier Commercial Realty website to see more listings.



MLS: 10040937

PROPERTY SPECIFICATIONS

Description:	Industrial Land
Land Size:	1.02 Acre (44,431 SF)
Possession:	Closing
Topography:	Flat
Environmental Status:	TBA
Utilities:	To Site
Sewer: City	Water: City
Frontage Dimensions:	126'
Zoning:	M
Real Estate Taxes:	\$4,551.02 (2017)
Sale Price:	\$174,000 (\$3.92 psf)



DIRECTIONS: Route 176 to Erick St. to Crystal Lake Ave.—turn right to East St. , right to property.

PIN: 14-33-356-005

August 10, 2018

No warranty or representation is made as to the accuracy of the foregoing information. Terms of sale or lease and availability are subject to change or withdrawal without notice. This document is for information purposes only. No offer of sub-agency is being made.

[CLICK HERE
TO VISIT OUR WEBSITE](#)

www.PremierCommercialRealty.com