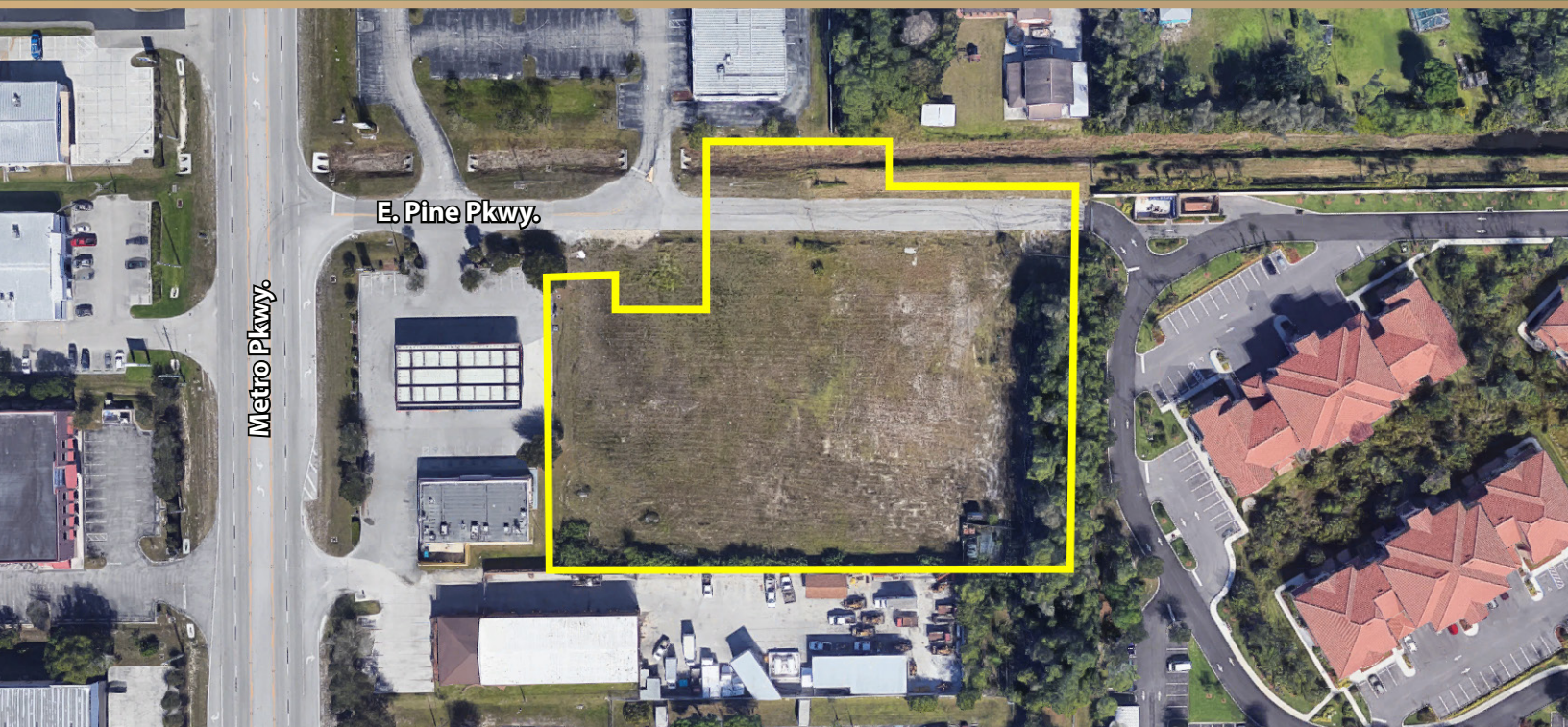


EAST PINE PKWY.

FORT MYERS, FL



HIGHLIGHTS

- 2.76± Acres
- Zoned IL (Light Industrial)
- One of the last remaining vacant industrial sites in this highly sought-after industrial corridor
- Site is fully cleared and currently vacant
- Multitude of potential uses exist for an end-user seeking a development order
- FDOT Traffic Count of 25,591 (Metro Pkwy.)

LOCATION

- 6180 E. Pine Pkwy., Fort Myers, FL 33966
- Quick and convenient access to the major thoroughfares of Southwest Florida
- Just ½ mile from Daniels Pkwy. and the rapidly expanding Gulf Coast Medical Center
- Quick access to I-75 and US-41 for distribution purposes

PRICE

- **\$746,060**



For more information, contact:
Hunter Ward, Sales Associate
(239) 489-4066 | hward@landsolutions.net

Land Solutions Inc.
6810 International Center Blvd.
Fort Myers, FL 33912

EAST PINE PKWY.

FORT MYERS, FL



For more information, contact:
Hunter Ward, Sales Associate
(239) 489-4066 | hward@landsolutions.net

Land Solutions Inc.
6810 International Center Blvd.
Fort Myers, FL 33912