

- Industrial
- Commercial
- Office
- Land
- Business

FOR SALE

Professional Office Condo Fully Furnished 2,679 SF

Nearly 2,700 SF of high end built out **FULLY FURNISHED** professional office condo. 5 private offices including executive corner office with rear exit and private bath with shower. Dazzling reception/waiting area with custom waterfall feature. Kitchenette, break room and conference room or 6th private office. Ideal for image conscious professional or sales organization. Current occupant moving to new quarters further east. Monthly association is \$501.64. Located in Crystal Lakes premier business park. Close to restaurants, motels, post office, banks , shopping, etc. only \$111.94 psf. Owner has over \$500,000 in it. SBA financing available with as little as 10% down. Did I mention the furniture is included? Not a better bargain to be found. Visit Premier Commercial Realty website for more listings.



PRICE REDUCED



PROPERTY SPECIFICATIONS

Description:	Professional Office Condo
Building Size:	2,679 SF
Land Size:	Condo
Year Built:	2008
HVAC System:	Central Air/ GFA
Electric:	200 amp
Sprinklered:	Yes
Washrooms:	2 - (1) with shower
Floors:	Carpet/Tile
Ceiling Height:	9'
Parking:	Common
Sewer/Water	City
Zoning:	M-PUD
Real Estate Taxes:	\$12,953.44 (2017)
Association Fee:	\$501.64/mo.
Lease Price:	Not For Lease
Sale Price:	\$329,900 (\$123.14 psf)
REDUCED:	\$299,900 (\$111.94 psf)

MLS: 09903698



Directions: Route 14 north on Exchange, west on Congress Parkway.

PIN: 19-04-403-008

August 6, 2018

No warranty or representation is made as to the accuracy of the foregoing information. Terms of sale or lease and availability are subject to change or withdrawal without notice. This document is for information purposes only. No offer of sub-agency is being made.

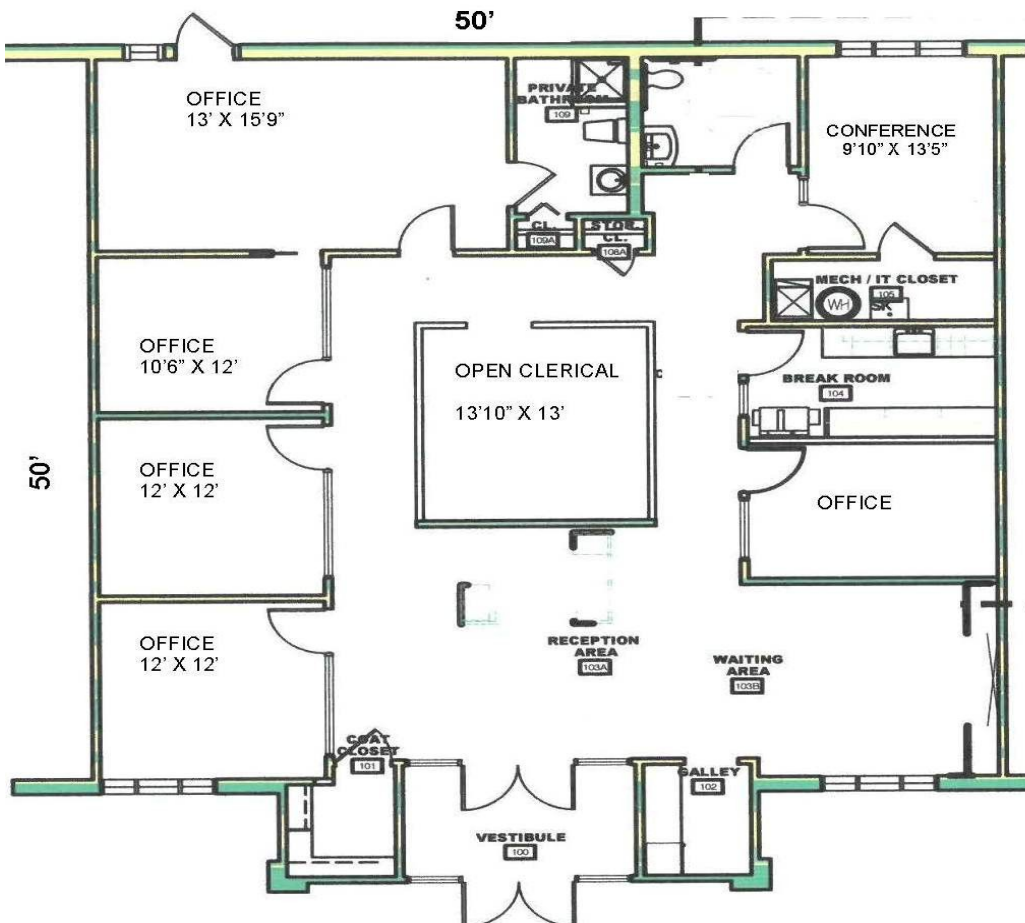
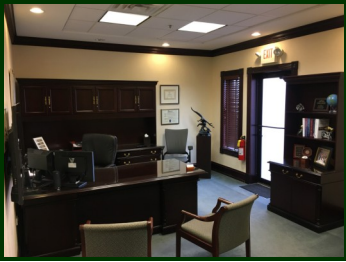
CLICK HERE
TO VISIT OUR WEBSITE

www.PremierCommercialRealty.com

PREMIER COMMERCIAL REALTY

- Industrial
- Commercial
- Office
- Land
- Business

407 E .Congress Parkway Unit C
Northwest Professional Center
Crystal Lake, IL 60014



- Industrial
- Commercial
- Office
- Land
- Business

