

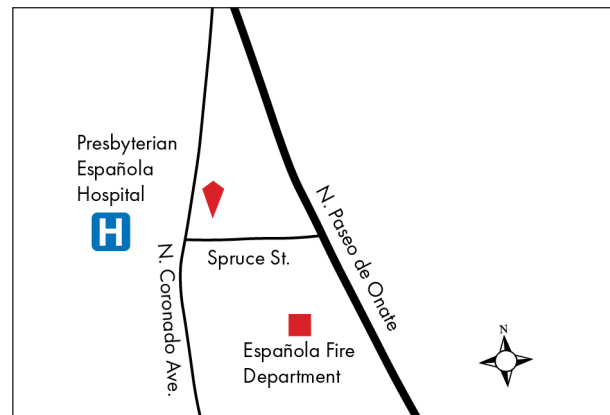
OFFICE COMPLEX FOR SALE

835 SPRUCE STREET
Española, New Mexico 87532

Four Suites in Three Buildings
Adjacent to Presbyterian Española Hospital



- \$715,000 (June 2018 Appraisal)
- Medical or Professional Use
- 7,451 sf Improved on 0.972 Acres
- Property Renovated 1995
- Zoned ROI (Res./Office, Institut.)



OFFICE COMPLEX FOR SALE

835 SPRUCE STREET
Española, New Mexico 87532

DEMOGRAPHIC SUMMARY

Spruce St, Espanola, New Mexico, 87532 (Ring of 5 miles)



Rings: 5 mile radii

22,273

Population

38.4

Median Age



8,592

Households

\$31,808

Median Disposable Income

KEY FACTS

EDUCATION

18%

No High School Diploma



32%
High School Graduate



33%
Some College



18%
Bachelor's/Grad/Prof Degree

INCOME



\$37,391

Median Household Income



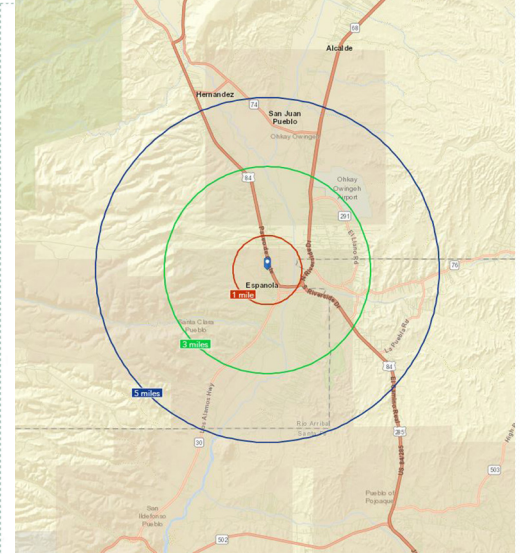
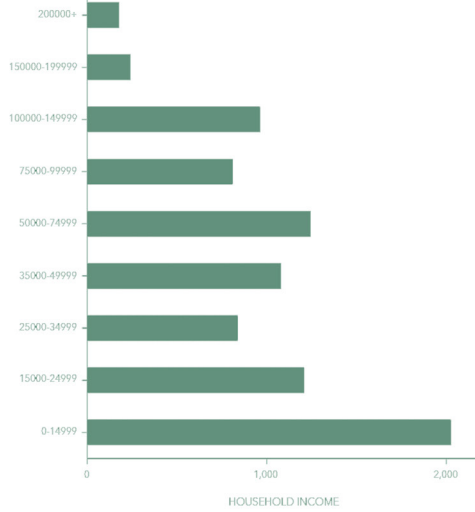
\$21,366

Per Capita Income



\$36,454

Median Net Worth



EMPLOYMENT



56%

White Collar

17%

Blue Collar

28%

Services

7.9%

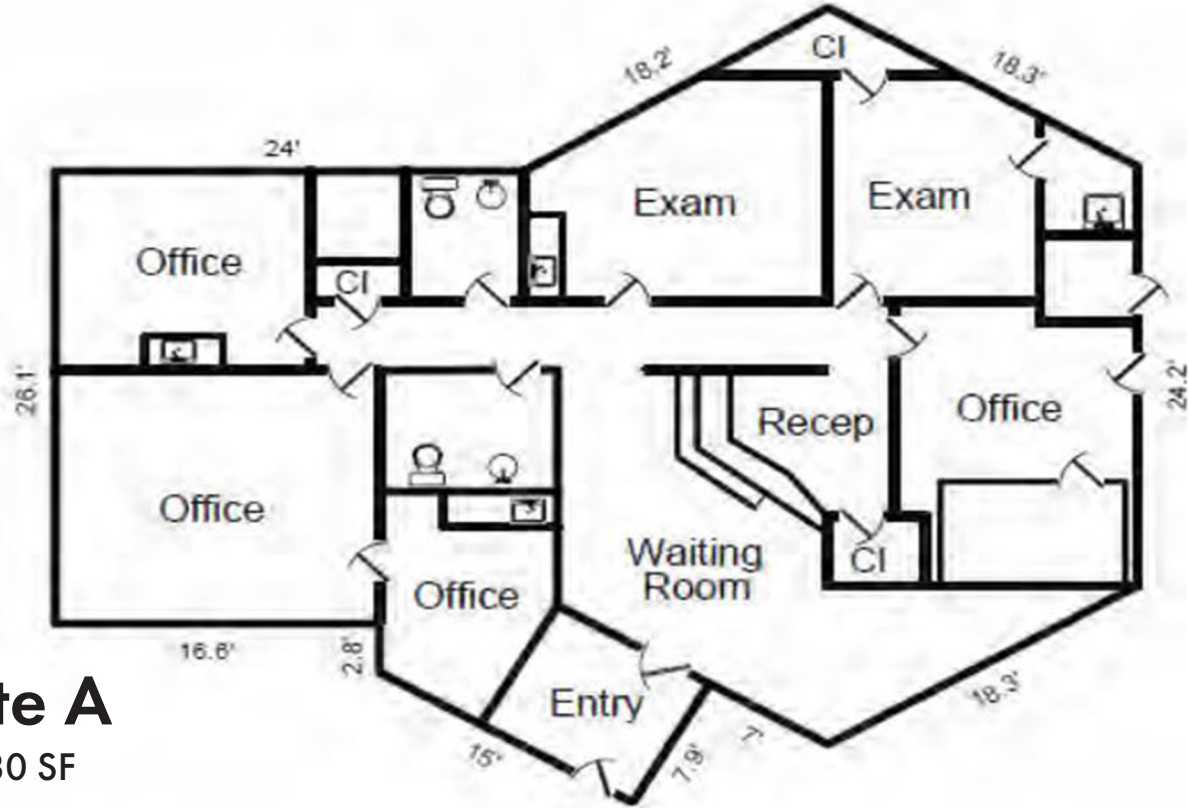
Unemployment Rate



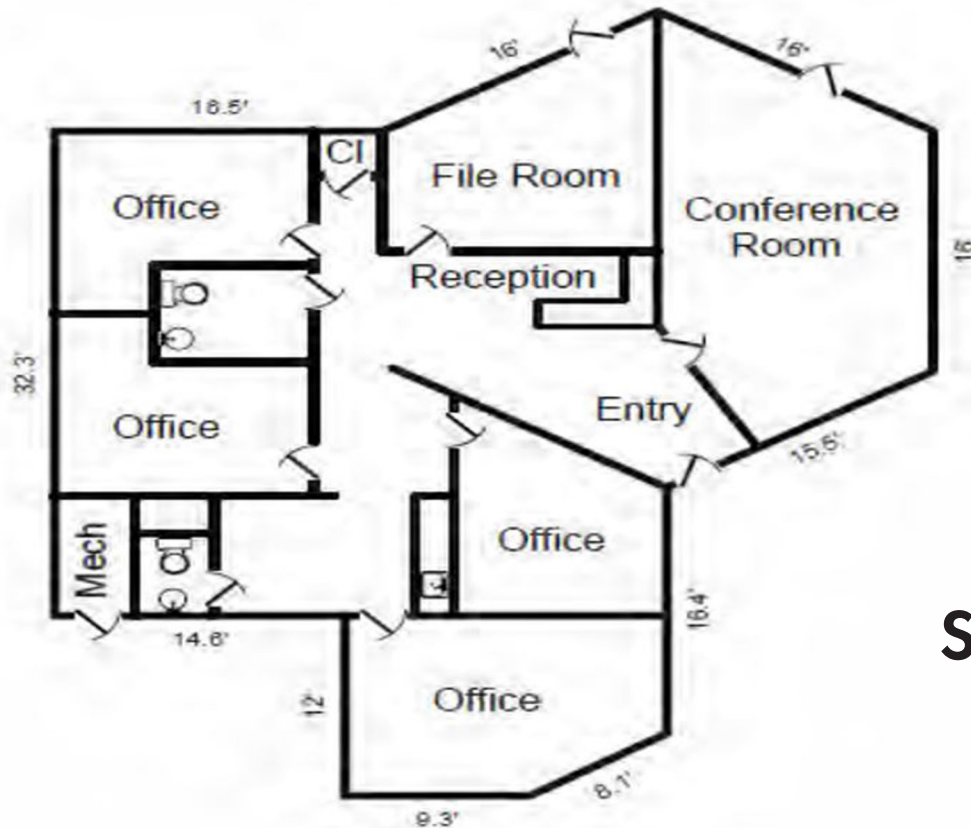
PRICE SUBJECT TO CHANGE! Information believed reliable and accurate but unverified. dRoberts cannot guarantee, warranty or make representations about it. Independently confirm accuracy and completeness. Value of transaction depends on tax and other factors to be evaluated by your tax, financial and legal advisors. Conduct a careful, independent investigation to determine the suitability of the property for your needs. Office Phone 505.428.0079.

OFFICE COMPLEX FOR SALE

835 SPRUCE STREET
Española, New Mexico 87532



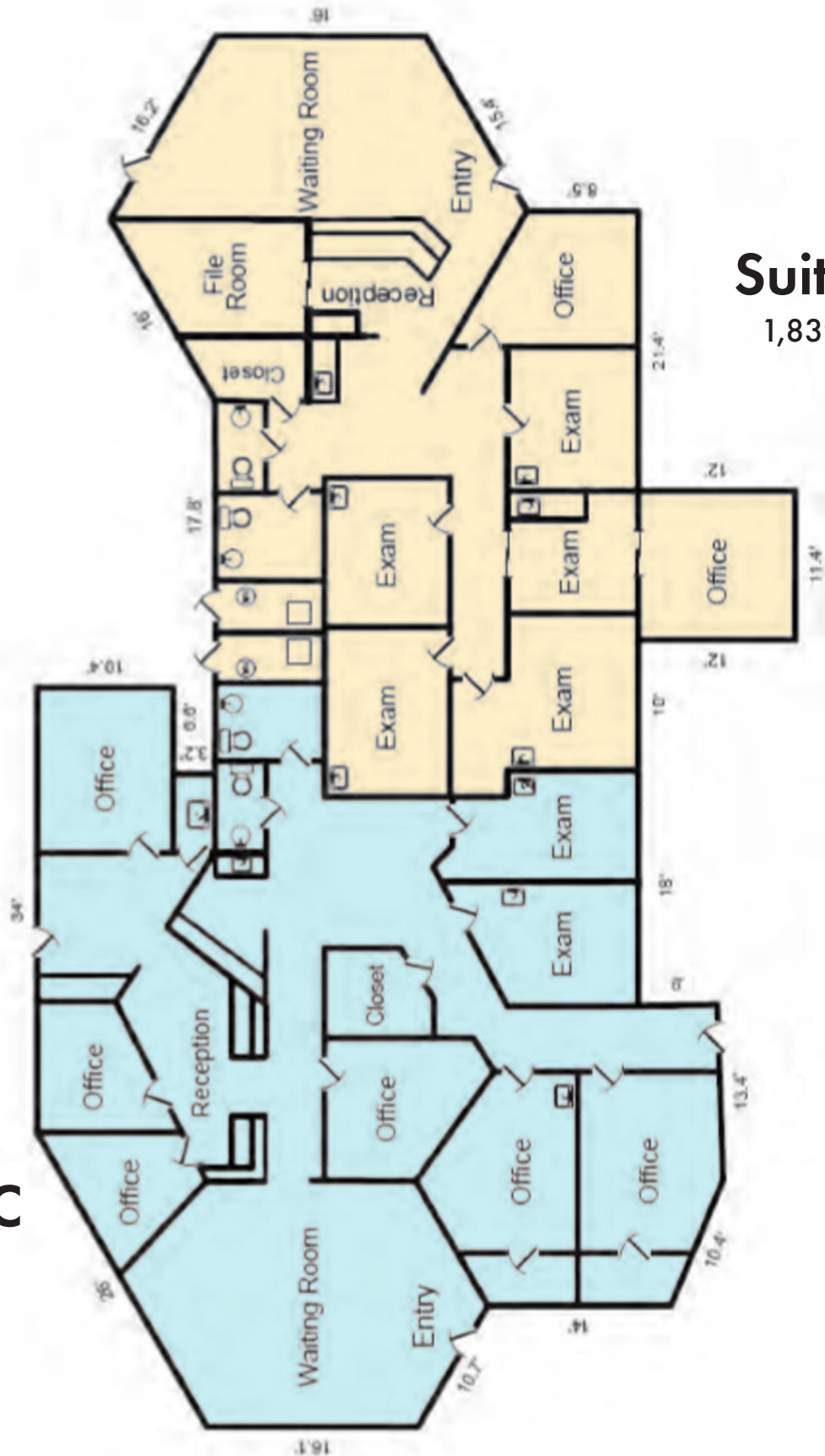
Suite A
1,780 SF



Suite D
1,552 SF

OFFICE COMPLEX FOR SALE

835 SPRUCE STREET
Española, New Mexico 87532



Suite B
1,839 SF

Suite C
2,280 SF

PRICE SUBJECT TO CHANGE! Information believed reliable and accurate but unverified. dRoberts cannot guarantee, warranty or make representations about it. Independently confirm accuracy and completeness. Value of transaction depends on tax and other factors to be evaluated by your tax, financial and legal advisors. Conduct a careful, independent investigation to determine the suitability of the property for your needs. Office Phone 505.428.0079.