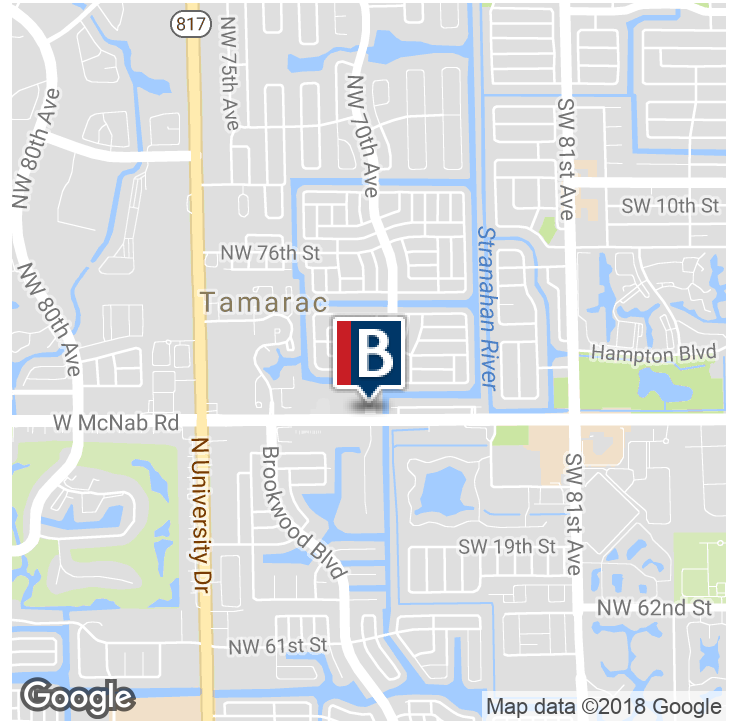
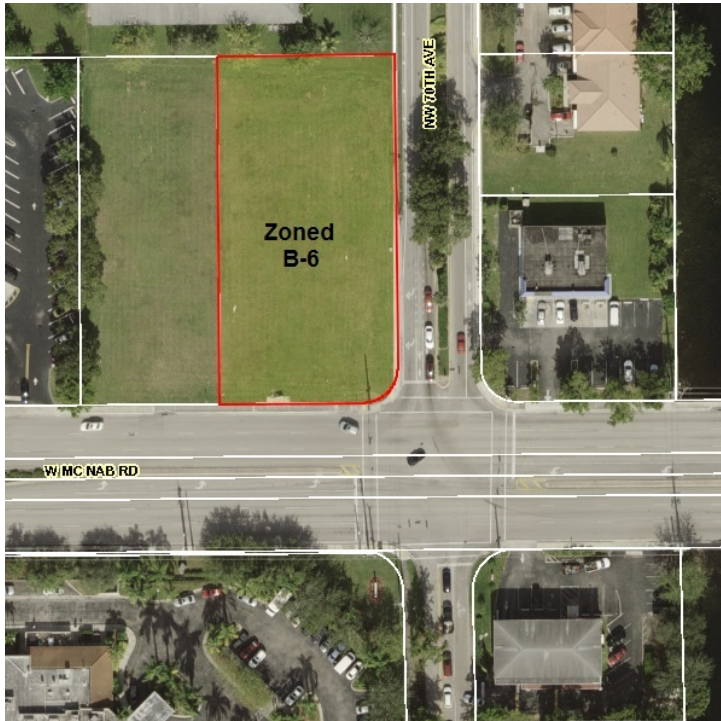


**Executive Summary**



**OFFERING SUMMARY**

Sale Price:	\$540,000
Lot Size:	.73 +/- Acres
Price / SF:	\$16.98
Folio #	494103020900
Zoning:	B-6

**PROPERTY OVERVIEW**

Commercial Land for Sale/ Prime Development Opportunity

**PROPERTY HIGHLIGHTS**

- 0.73 +/- Acres for sale (31,873 +/- SF)
- Offered at- \$540,000
- Zoning Authority- City Of Tamarac
- Average Daily Traffic Volume - 45,000+/- (2016)
- Proximity to many national retailers including Walmart, Publix, Auto Zone and Family Dollar as well as a number of banks and restaurants
- 4-way signalized intersection (corner parcel)



**Keith R. Graves, CCIM**  
 Senior Vice President  
 954.652.2031  
 kgraves@bergercommercial.com

**St. George Guardabassi**  
 Senior Vice President  
 954.652.2032  
 st.george@bergercommercial.com

NW Corner Of W McNab Rd & NW 70th Ave, Tamarac, FL 33321

Additional Photos



**Keith R. Graves, CCIM**  
Senior Vice President  
954.652.2031  
kgraves@bergercommercial.com

**St. George Guardabassi**  
Senior Vice President  
954.652.2032  
st.george@bergercommercial.com

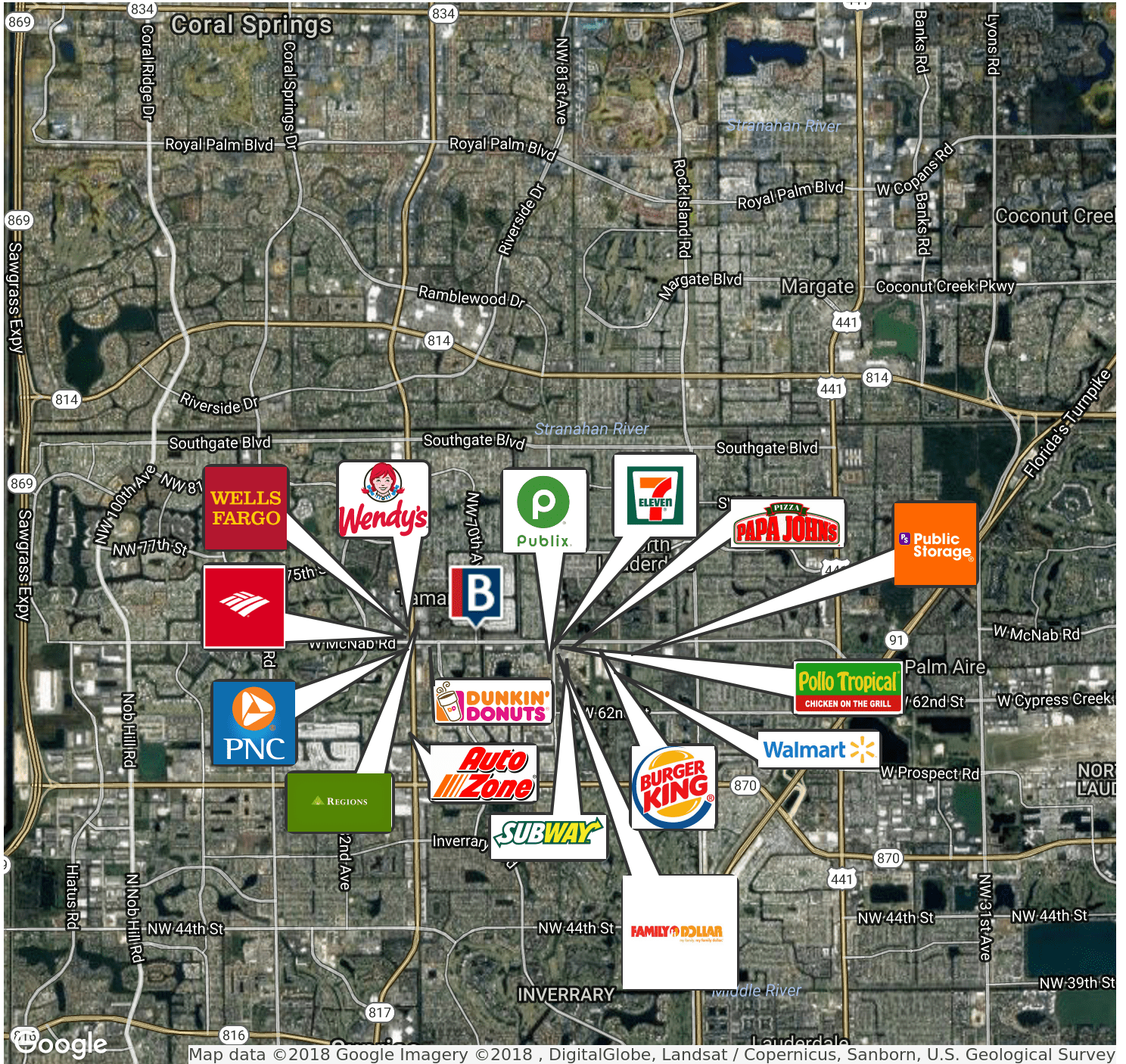
Berger Commercial Realty Corp. | [bergercommercial.com](http://bergercommercial.com)

1600 Southeast 17th Street, Suite 200, Fort Lauderdale, FL 33316 | P: 954.358.0900 • F: 954.358.0901 | 2240 Woolbright Road, Suite 300, Boynton Beach, FL, 33426 | P: 561.613.0900 F: 561.877.8363

Information furnished regarding this property is from sources deemed reliable, but no warranty or representation as to the accuracy thereof and it is submitted subject to errors, omissions, prior sale, lease or withdrawal without prior notice.

NW Corner Of W McNab Rd & NW 70th Ave, Tamarac, FL 33321

Retailer Map



**Keith R. Graves, CCIM**  
 Senior Vice President  
 954.652.2031  
 kgraves@bergercommercial.com

**St. George Guardabassi**  
 Senior Vice President  
 954.652.2032  
 st.george@bergercommercial.com

Berger Commercial Realty Corp. | bergercommercial.com

1600 Southeast 17th Street, Suite 200, Fort Lauderdale, FL 33316 | P: 954.358.0900 • F: 954.358.0901 | 2240 Woolbright Road, Suite 300, Boynton Beach, FL, 33426 | P: 561.613.0900 F: 561.877.8363

Information furnished regarding this property is from sources deemed reliable, but no warranty or representation as to the accuracy thereof and it is submitted subject to errors, omissions, prior sale, lease or withdrawal without prior notice.