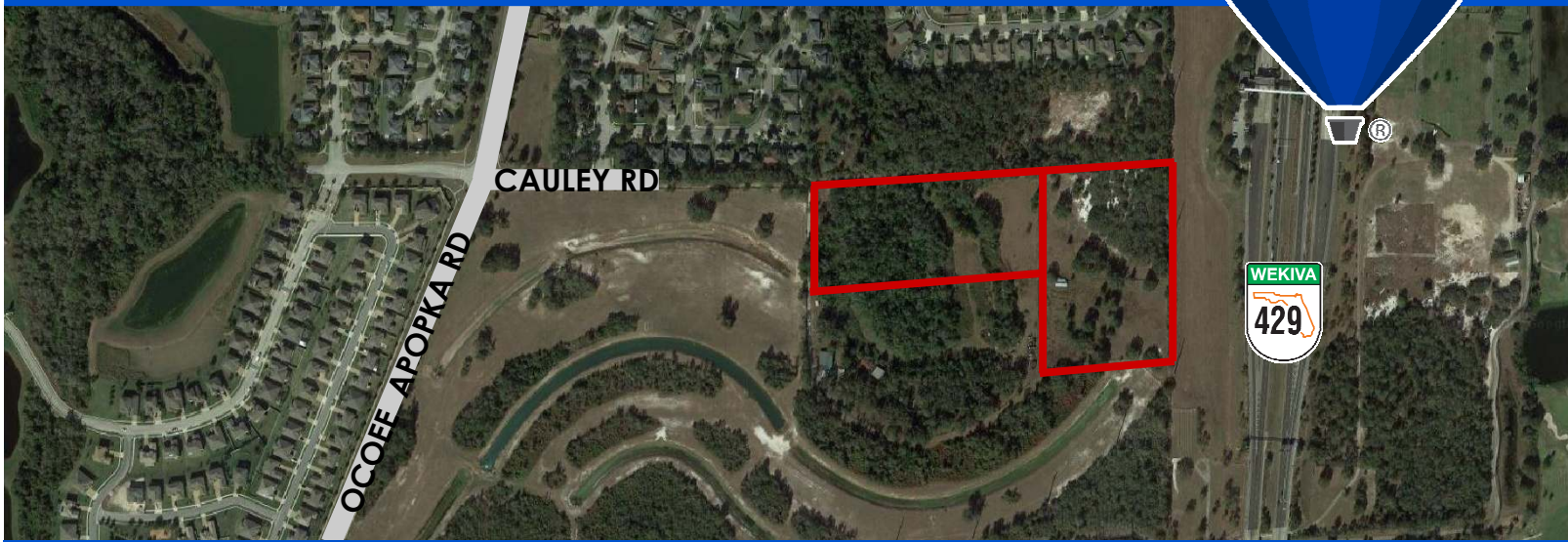


DEVELOPMENT SITE FOR SALE

~15.35 ACRES ~



Asking Price: \$775,000

1850 & 1802 CAULEY RD, OCOEE, FL 32810

PROPERTY OVERVIEW:

15.35 ACRES OF PRIME PROPERTY in the heart of west Orange County. Ideally suited for an equestrian estate, private recreation grounds, campground, one or more single family estate homes. The property has the ideal location with immediate access to HWY-429 (both north and south) in less than 2 miles!

The land has tremendous pastoral appeal with large and easily walkable meadows, shaded by beautiful mature tree cover. The site offers a very private entrance area well suited for a secluded family compound which would easily accommodate multiple equestrian improvements. The property is entirely fenced with a significant portion of the fencing installed and maintained by government agencies.

Property is comprised of two tax parcel numbers and being sold together.



SITE FEATURES

LAND SIZE	15.35 ACRES
ZONING	A-1
PARCEL ID	32-21-28-0000-00-027 and -028
UTILITIES	Electric - Well - Septic
FUTURE LAND USE	"RURAL"
HWY FRONTAGE	690 FEET ALONG HWY-429

For more information, please contact:

BILL MILLER

RE/MAX Central Realty
(407) 415-2263
bmiller@mycflre.com

RE/MAX
COMMERCIAL®

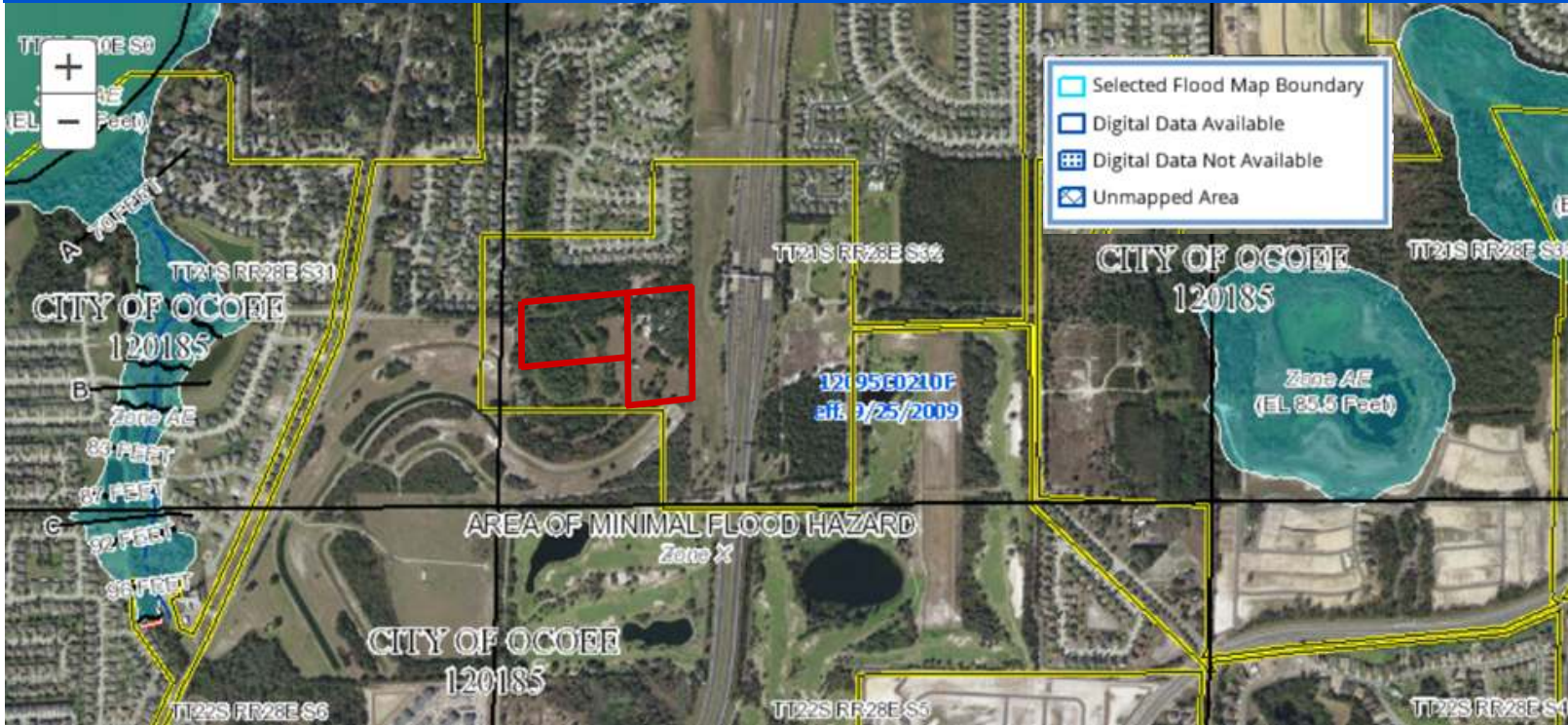
300 Primera Blvd Suite 100
Lake Mary, FL 32746

DEVELOPMENT SITE FOR SALE

~15.35 ACRES



FEMA FLOOD ZONE MAP:



For more information, please contact:

BILL MILLER

RE/MAX Central Realty
(407) 415-2263
bmiller@mycflre.com

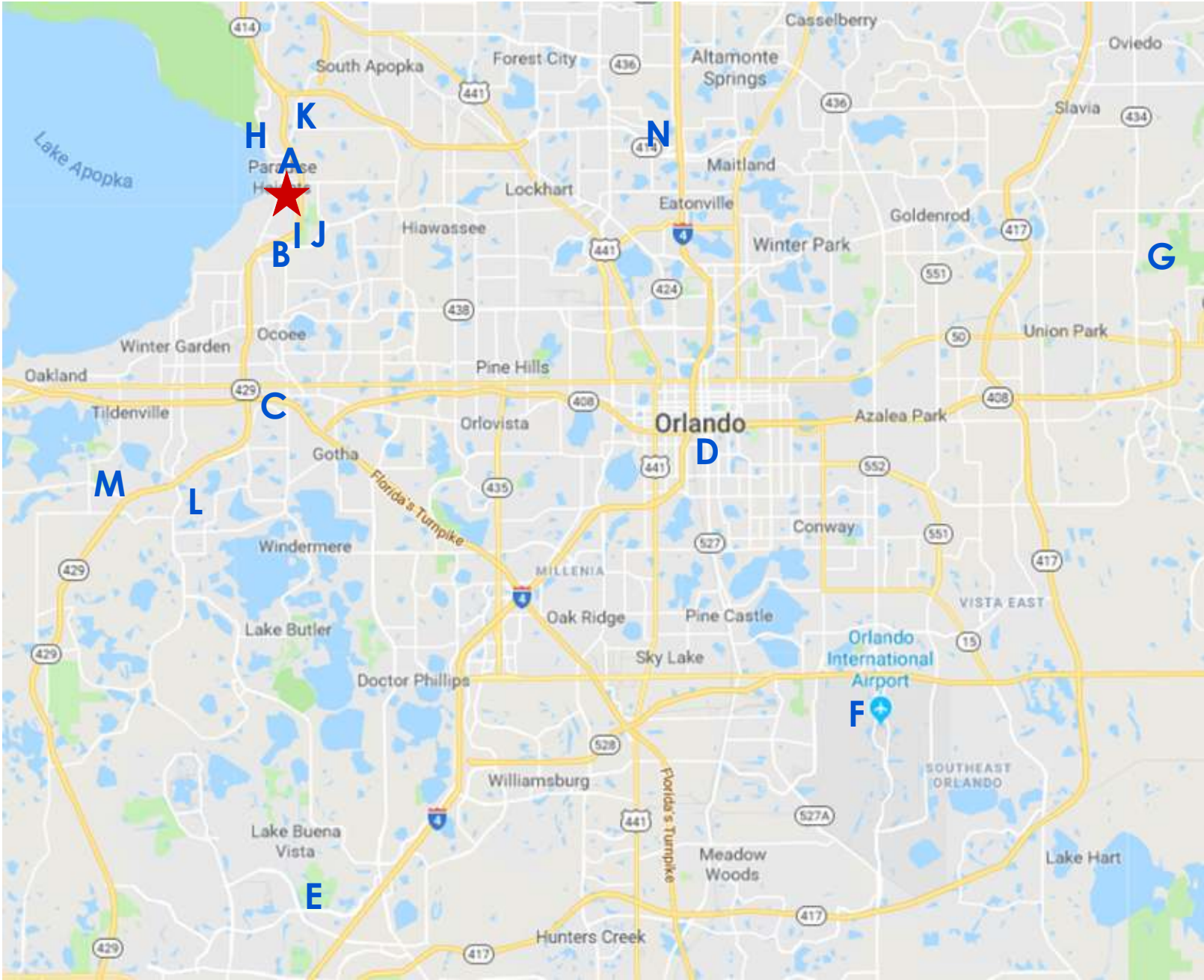
RE/MAX
COMMERCIAL®

300 Primera Blvd Suite 100
Lake Mary, FL 32746

DEVELOPMENT SITE FOR SALE

~15.35 ACRES

GREATER ORLANDO AREA



A) HWY 429 (Northbound)	3 minutes	2 miles
B) HWY 429 (Southbound)	3 minutes	2 miles
C) Florida Turnpike	10 minutes	6 miles
D) Downtown Orlando	18 minutes	22 miles
E) Walt Disney World	22 minutes	24 miles
F) Orlando Intl' Airport	30 minutes	26 miles
G) University of Central FL	40 minutes	32 miles

H) Lake Apopka Boat Ramp	3 minutes	2 miles
I) West Orange Walking Trail	3 minutes	2 miles
J) Forest Lake Golf Club	3 minutes	2 miles
K) Florida Hospital - Apopka	5 minutes	3 miles
L) Winter Garden Village	12 minutes	9 miles
M) Stoneybrook West Golf	15 minutes	11 miles
N) RDV Sportsplex	15 minutes	12 miles

For more information, please contact:

BILL MILLER

RE/MAX Central Realty
 (407) 415-2263
 bmiller@mycflre.com



300 Primera Blvd Suite 100
 Lake Mary, FL 32746