

30 Fully Developed ±5.00 Acre Lots For Sale  
Meadow Run, Palm City, Florida 34990

**NAI**Southcoast

**SITE**



**Presented by:**

**Nikolaus M. Schroth, CCIM**  
Associate Broker/Vice President  
+1 772 403 3752  
[nikschrth@naisouthcoast.com](mailto:nikschrth@naisouthcoast.com)

Offered At:  
**\$5,700,000**

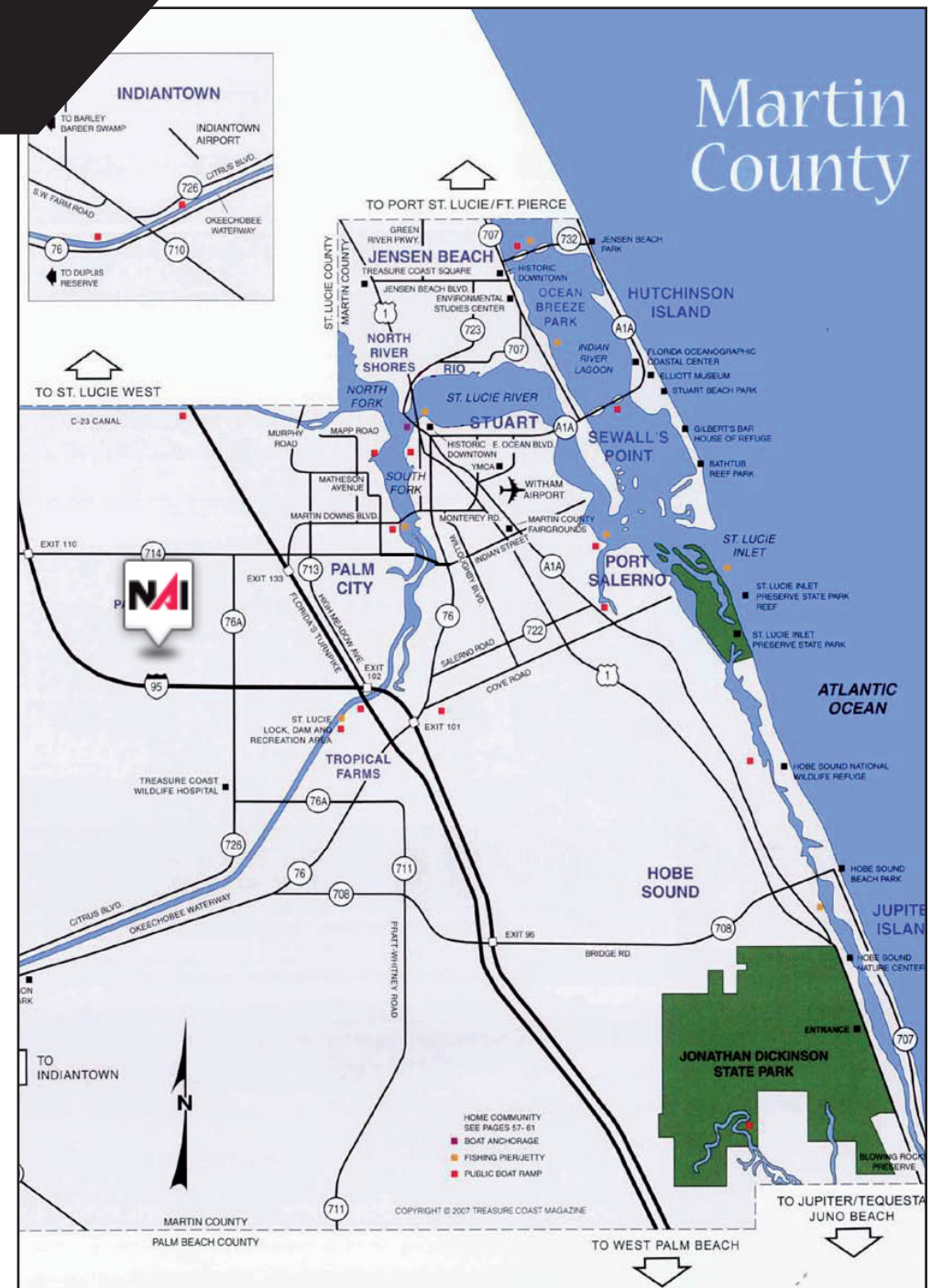


# 30 Fully Developed ±5.00 Acre Lots For Sale Meadow Run, Palm City, Florida 34990

## Property Overview

30 Developed Single Family lots in the highly desirable Palm City Farms neighborhood. These lots are within the gated community of Meadow Run just west of the Turnpike in Palm City, Martin County FL. All of the lots have paved road frontage and are build-er ready. With 9 proposed new residences within the community, the Meadow Run subdivision is showing market appeal and this offering is an opportunity for a builder to establish a program of-fering custom homes, equestrian homes on 5+ acre estate lots.

- School District: Citrus Grove Elementary, Hidden Oaks Middle School, South Fork High School
- Median House Hold Income 1 Mile: \$103,806
- Population Within 10 Miles: 196,739
- Median Age Within 10 Miles: 49.1





# 30 Fully Developed $\pm 5.00$ Acre Lots For Sale Meadow Run, Palm City, Florida 34990

## Opportunities

- Equestrian Homes
- Estate Homes

## Available Lots:

- Parcel #13  $\pm 5.11$  Acres • Parcel #32  $\pm 5.24$  Acres • Parcel #45  $\pm 5.00$  Acres
- Parcel #16  $\pm 5.03$  Acres • Parcel #33  $\pm 5.36$  Acres • Parcel #46  $\pm 5.02$  Acres
- Parcel #18  $\pm 5.02$  Acres • Parcel #38  $\pm 5.14$  Acres • Parcel #69  $\pm 5.11$  Acres
- Parcel #27  $\pm 5.01$  Acres • Parcel #39  $\pm 5.00$  Acres • Parcel #73  $\pm 5.02$  Acres
- Parcel #28  $\pm 5.01$  Acres • Parcel #40  $\pm 5.01$  Acres • Parcel #74  $\pm 5.02$  Acres
- Parcel #29  $\pm 5.20$  Acres • Parcel #41  $\pm 5.00$  Acres • Parcel #75  $\pm 5.06$  Acres
- Parcel #30  $\pm 5.00$  Acres • Parcel #42  $\pm 5.04$  Acres • Parcel #76  $\pm 5.88$  Acres
- Parcel #31  $\pm 5.00$  Acres • Parcel #43  $\pm 5.10$  Acres • Parcel #78  $\pm 5.17$  Acres
- Parcel #44  $\pm 5.04$  Acres



# 30 Fully Developed ±5.00 Acre Lots For Sale

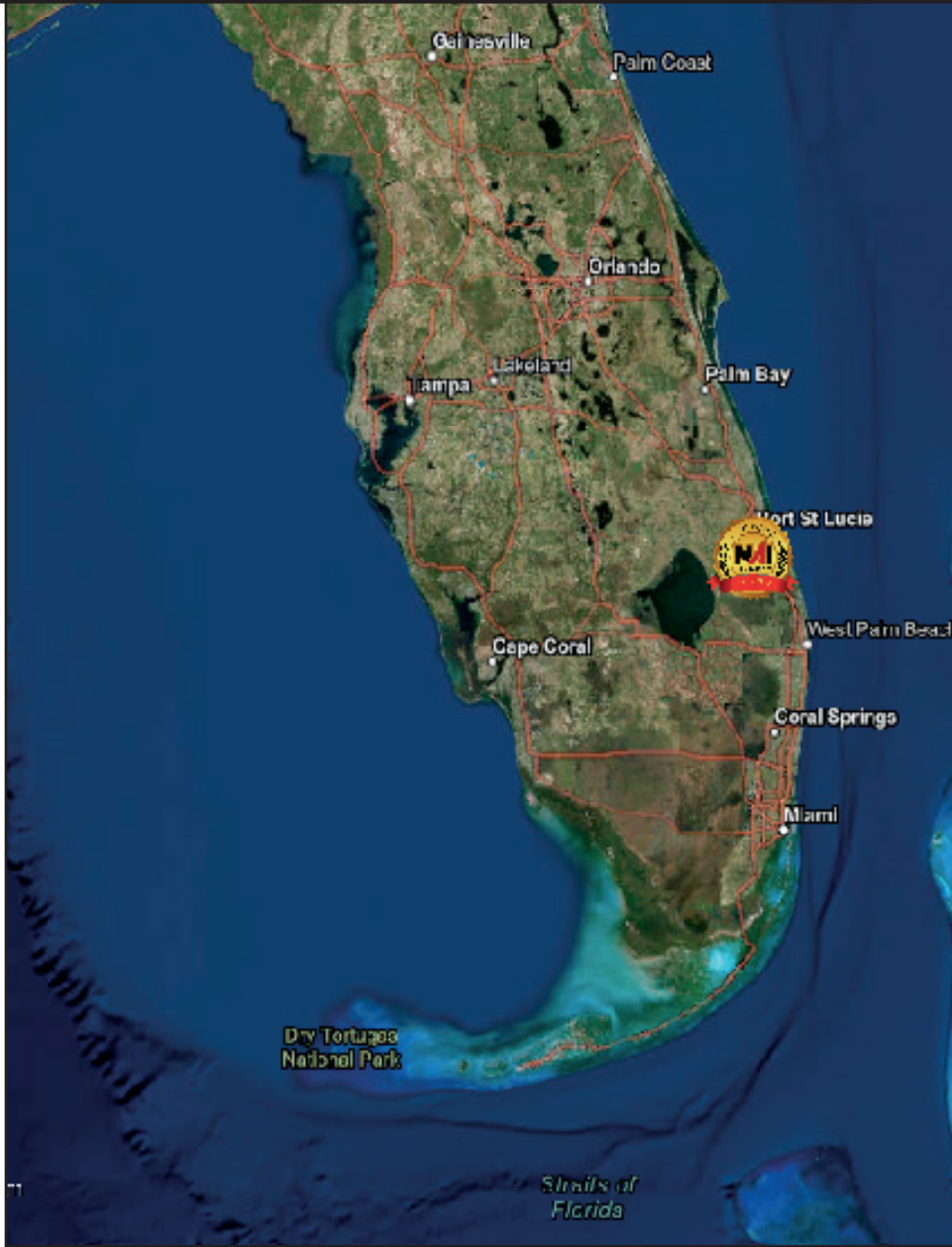
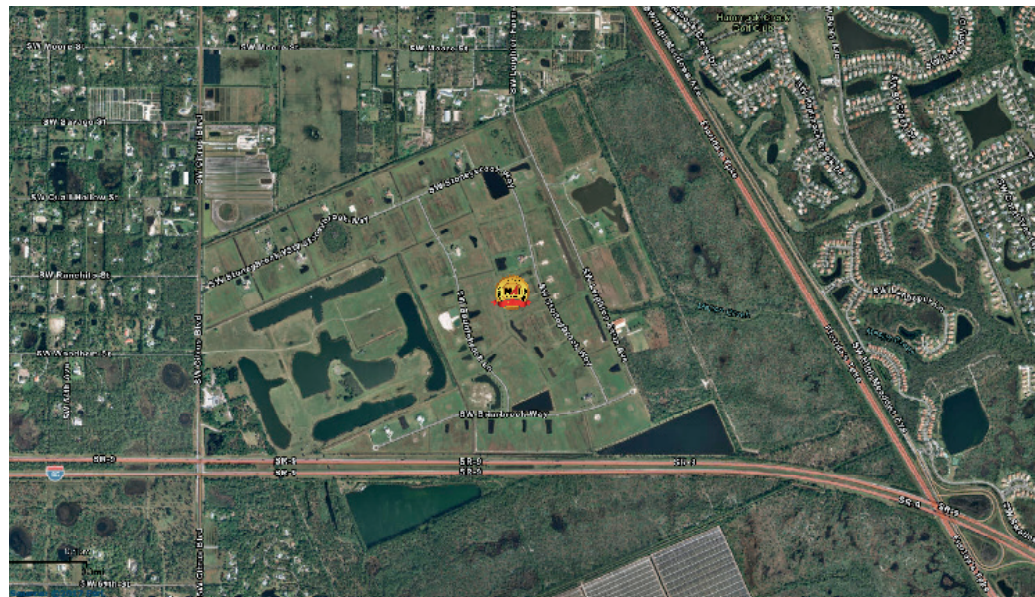
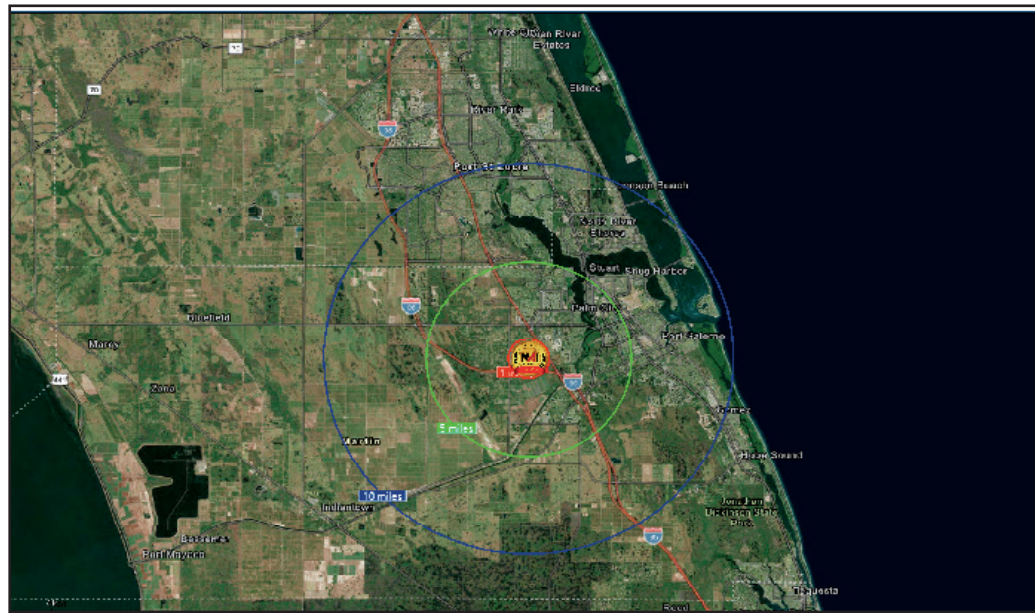
## Site Plan





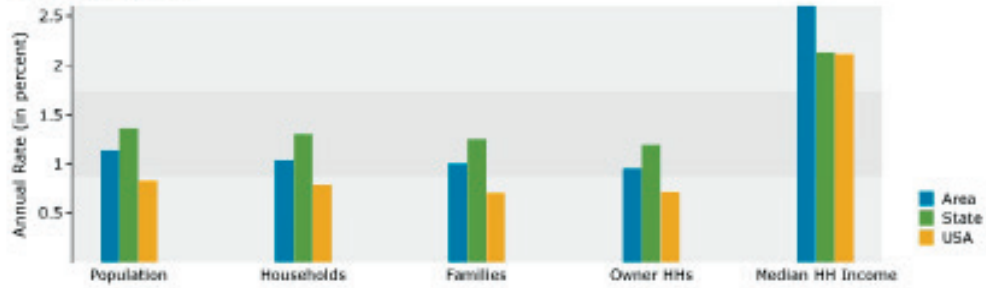
# Property Maps

30 Fully Developed  $\pm 5.00$  Acre Lots For Sale  
Meadow Run, Palm City, Florida 34990

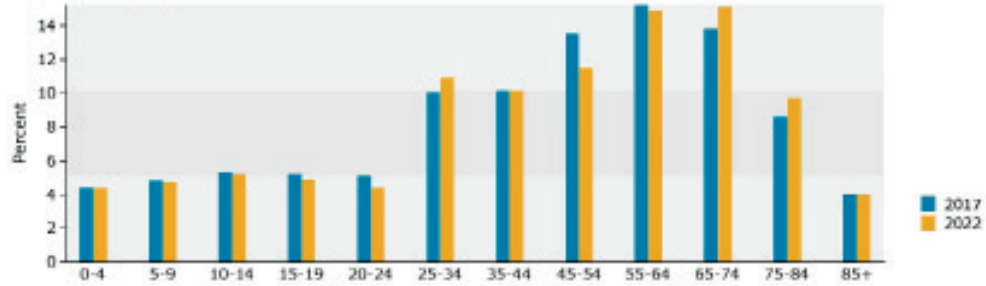


# 2018 Demographics

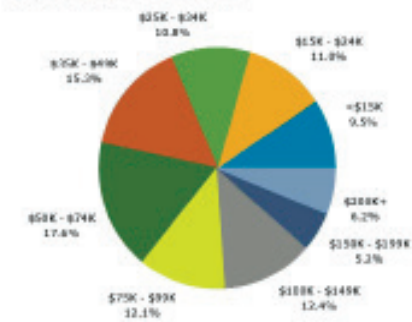
Trends 2017-2022



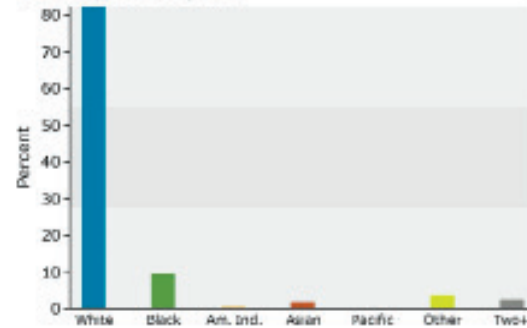
Population by Age



2017 Household Income



2017 Population by Race



2017 Percent Hispanic Origin: 14.5%

## Population

- 1 Mile 103
- 5 Miles 54,496
- 10 Miles 196,739

## Average Household Income

- 1 Mile \$103,806
- 5 Miles \$91,686
- 10 Miles \$81,132

## Median Age

- 1 Mile 48.1
- 5 Miles 50.6
- 10 Miles 49.1



# Meadow Run

## LISTING AGENT



### Nikolaus M. Schroth, CCIM

Broker Associate/Vice President

+1 772 403 3752

[nikschroth@naisouthcoast.com](mailto:nikschroth@naisouthcoast.com)

[www.naisouthcoast.com](http://www.naisouthcoast.com)

## 30 Fully Developed ±5.00 Acre Lots For Sale Meadow Run, Palm City, Florida 34990



Offered At:  
**\$5,700,000**