

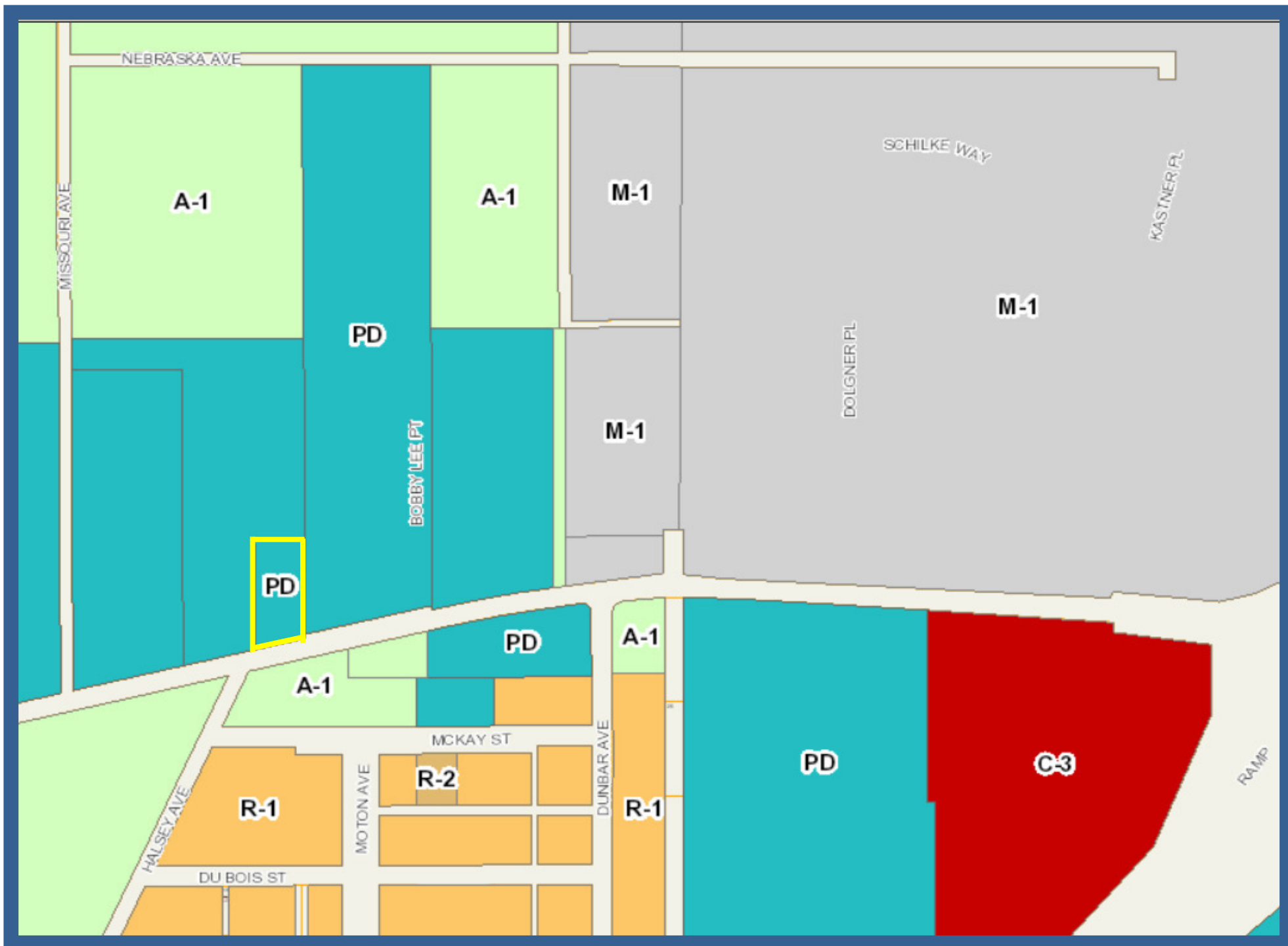


4600 West Orange Boulevard

A vacant commercial lot comprising .69 acres (+/-)



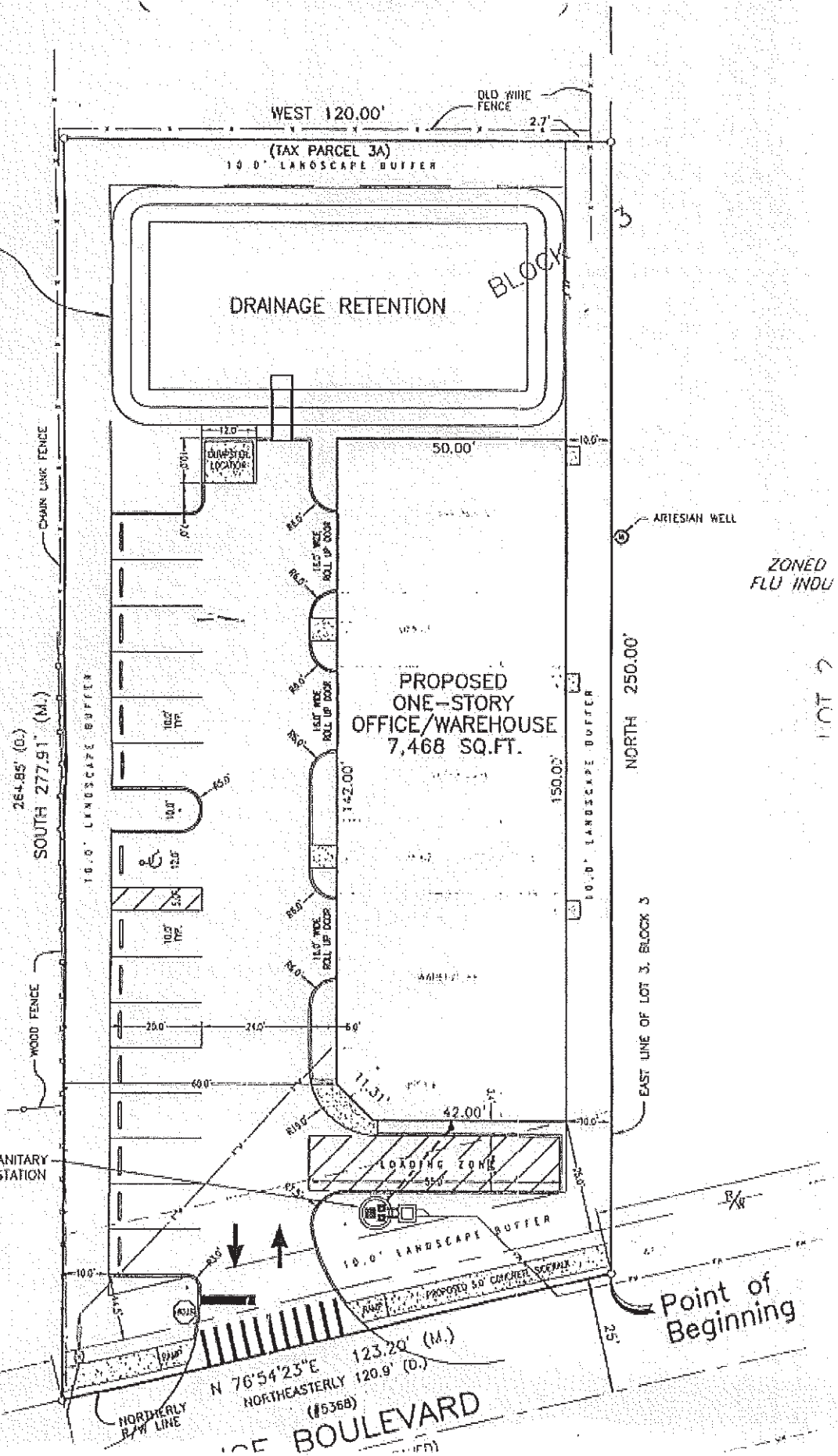
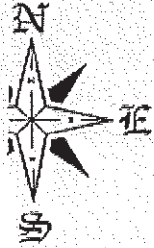




ZONED PCD
FLU PLANNED DEVELOPMENT

LOT 3

ZONED PCD
PLANNED DEVELOPMENT



EXISTING EPC IMPROVED 120' (0.)
INTERSECTION WITH HILSEY AVENUE

N 76°54'23"E 123.20' (M.)
NORTHEASTERLY 120.9' (0.)
(#6368)
ICE BOULEVARD

Point of Beginning